

# Apartment 22, £215,000

(Other charges apply)

RICHMOND  
VILLAGES

Part of Bupa



1



1



EPC - D



## 1 bedroom first floor apartment

A spacious first-floor one-bedroom apartment at 484 sqft. A lovely bright first floor property that benefits from a dual South/West aspect in the lounge and stunning Easterly views from the kitchen.

### Specification

- The bright and welcoming living room is well proportioned, providing a lovely space to entertain family or friends, with views across the courtyard and towards our woodlands.
- The well-equipped fitted kitchen has wall and base units, stainless steel sink and drainer, ample work surfaces, oven, hob and integrated fridge freezer.
- The bedroom is a light and airy with plenty of room for storage with built in wardrobes.
- The shower room has a walk-in shower, a WC and wash hand basin.
- Well stocked flower borders and lawns maintained by the Village Gardeners.
- Allocated parking space for car owners.



Important Notice: These particulars are intended to give a fair and substantially correct overall description. Other fees and charges apply, please contact the Village Advisers for further details. Properties are sold on a 125 year lease and this property has 122 years remaining.

01270 629 080

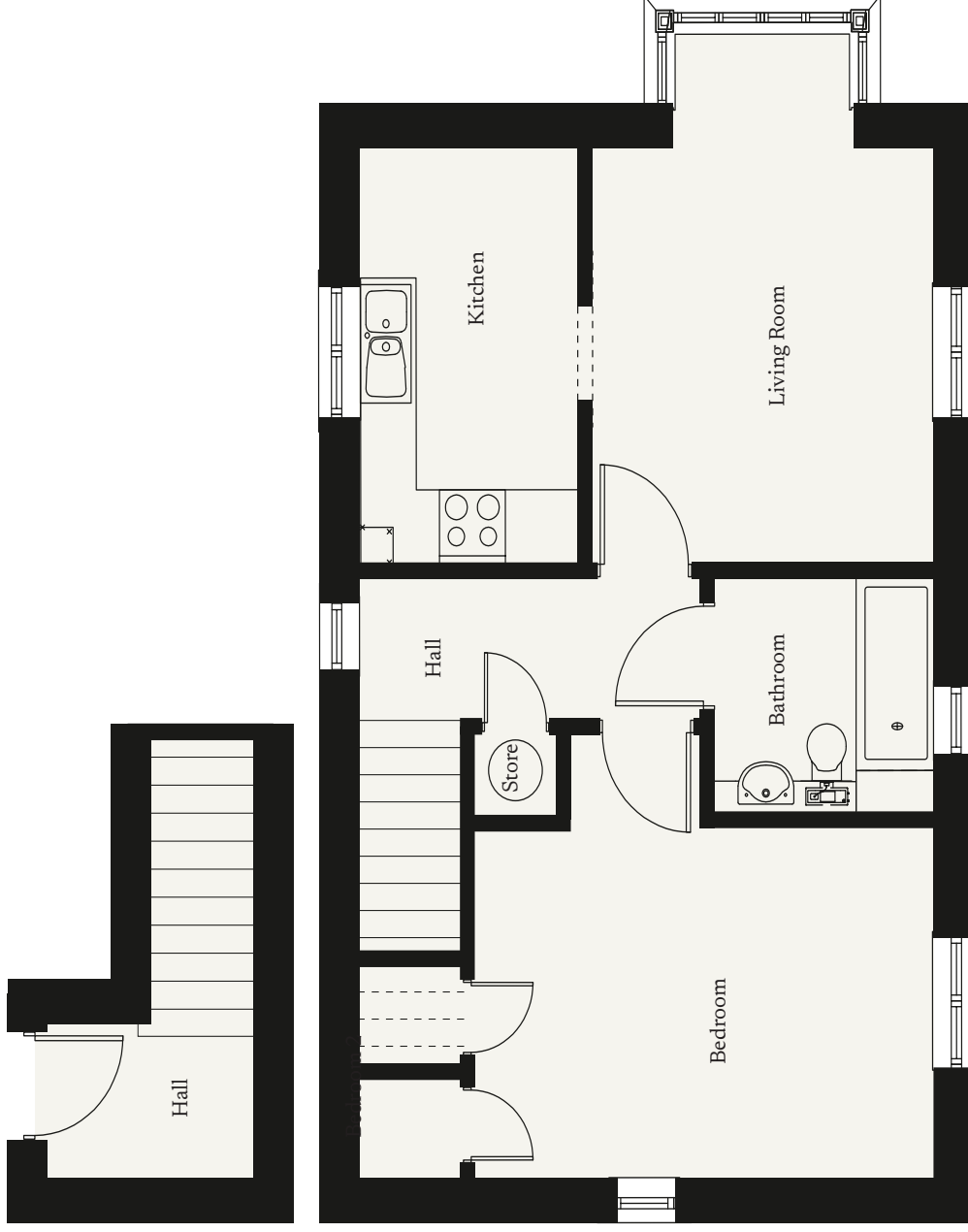
nantwich@richmond-villages.com

Richmond Villages Nantwich,  
St Joseph's Way, London Road, Nantwich, Cheshire, CW5 6LZ

# Apartment 22

First Floor | 484ft<sup>2</sup>

- Kitchen  
11'6" x 6'11"
- Living Room  
11'6" x 10'9"
- Bedroom  
14'4" x 9'8"
- Bathroom  
6'11" x 6'6"



These particulars are intended to give a fair and substantially correct overall description. Measurements have been taken at 1500mm ceiling height. All dimensions are approximate. Bedroom measurements include the wardrobe if applicable. Room measurements include bay windows if applicable. Furniture layout is to give an indicative impression. Although all efforts have been made to ensure its accuracy at time of print dimensions, fixtures, fittings, finishes and specifications are subject to change without notice. The properties are sold unfurnished.

