

# 34 Village Centre, £345,000\*

(Other charges apply)

RICHMOND  
VILLAGES

Part of Bupa

2F

1



1



EPC - C



## 1 bedroom second floor apartment

Richmond Villages Witney are pleased to offer for resale this one-bedroom assisted living apartment. This apartment is in a desirable location within the retirement village with easy access to the restaurant, bar, reception, art studio, library, wellness spa, outdoor seating areas, bowling green, café and shop.

### Specification

- Stylish one bedroom, second floor apartment
- Assisted Living
- South facing views
- Generously sized rooms
- Outstanding on-site facilities including Luxury Wellness Spa
- Centred around community & wellbeing
- Beautifully manicured grounds
- Allocated parking space for one car
- Situated within the beautiful town of Witney
- Underfloor heating throughout



\*Satellite subscription not included.

Important Notice: These particulars are intended to give a fair and substantially correct overall description. **Other fees and charges apply**, please contact the Village Advisers for further details. Properties are sold on a 125 year lease and this property has 117 years remaining.

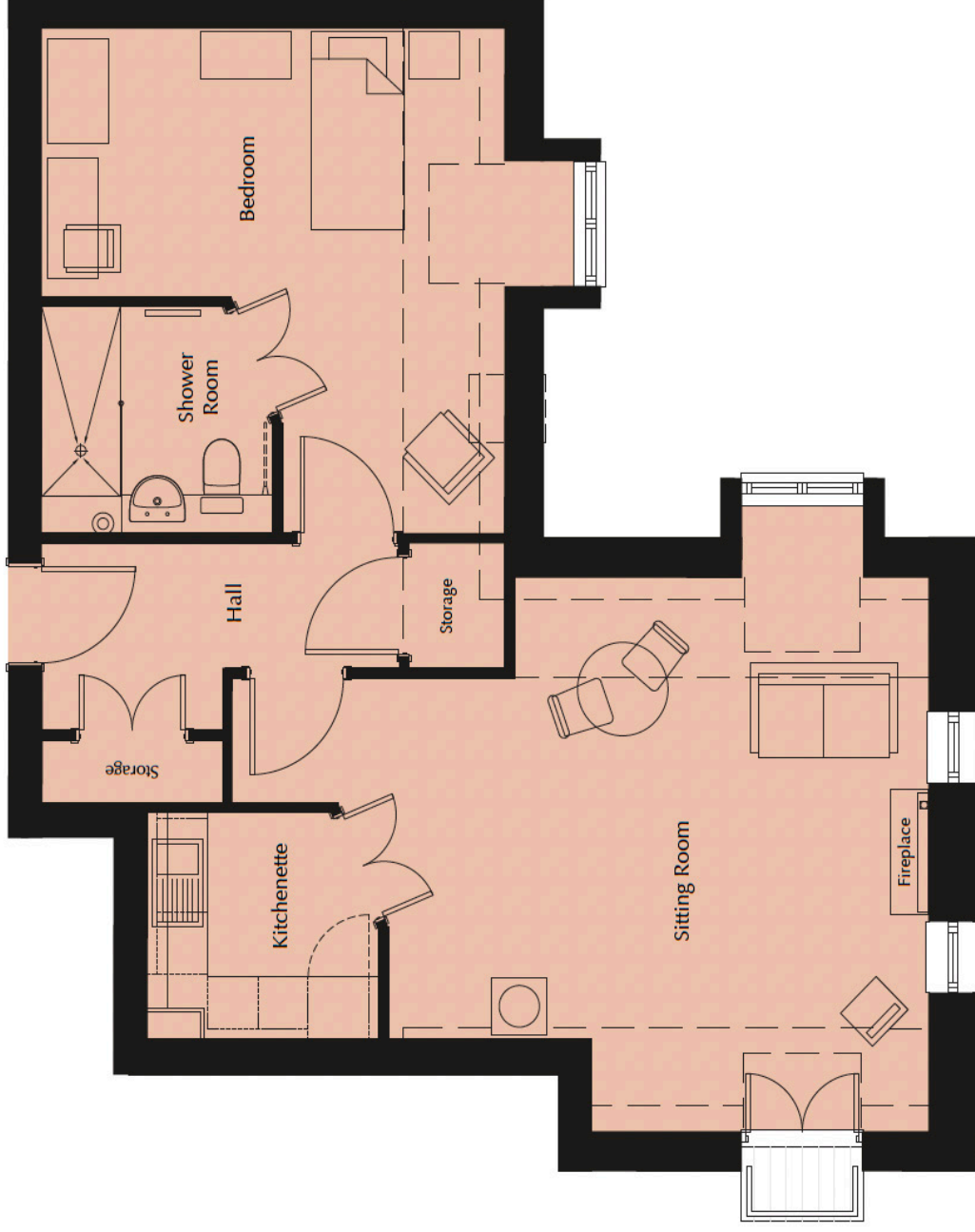
01993 894 006  
witney@richmond-villages.com

Richmond Villages Witney,  
Coral Springs Way, Witney, OX28 5DG

# 34 Village Centre

Floor 2 | 643.4m<sup>2</sup> – 682ft<sup>2</sup>\*

- Kitchenette**  
2300mm x 2180mm  
7'6" x 7'2"
- Sitting Room**  
5373mm x 4880mm\* (min)  
17'6" x 16'0"
- Bedroom**  
4865mm x 4353mm\* (max)  
16'0" x 14'3"
- Shower Room**  
2300mm x 2180mm  
7'6" x 7'2"



These particulars are intended to give a fair and substantially correct overall description.

Measurements have been taken at 1500mm skimming height.

All dimensions are approximate. Bedroom measurements include the wardrobe if applicable. Room measurements include bay windows if applicable.

Furniture layout is to give an indicative impression. Although all efforts have been made to ensure its accuracy at time of print dimensions, fixtures, fittings, finishes and specifications are subject to change without notice.

The properties are sold unfurnished.

