

Apartment 2.3, £275,000

(Other charges apply)

RICHMOND
VILLAGES

Part of Bupa



EPC - B

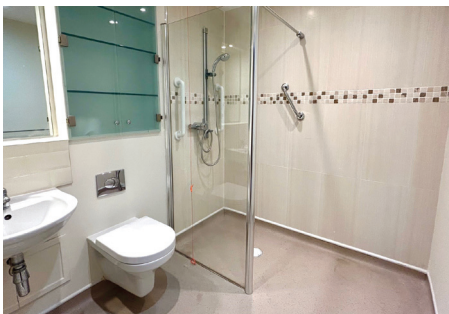


1 bedroom courtyard level apartment

This beautifully finished, one-bedroom, fully serviced apartment benefits from a South-East facing lounge with views to the rolling hills of the Painswick Valley and French doors opening out onto the rooftop garden.

Specification

- Open Plan Sitting Room with bright patio doors opening out onto our rooftop terrace, electric fire with Bath stone-effect surround.
- The fitted kitchen features wall and base units, stainless steel sink and drainer, work surfaces and built in fridge.
- Main bedroom with bright south facing window.
- En-suite shower room with walk-in shower and fitted sanitary unit.
- TV and satellite points*.
- Well stocked flower borders and lawns maintained by the Village Gardeners.
- Allocated parking space for one car.



*Satellite subscription not included.

Important Notice: These particulars are intended to give a fair and substantially correct overall description. Other fees and charges apply, please contact the Village Advisers for further details. Properties are sold on a 125 year lease and this property has 112 years remaining.

01452 813 902

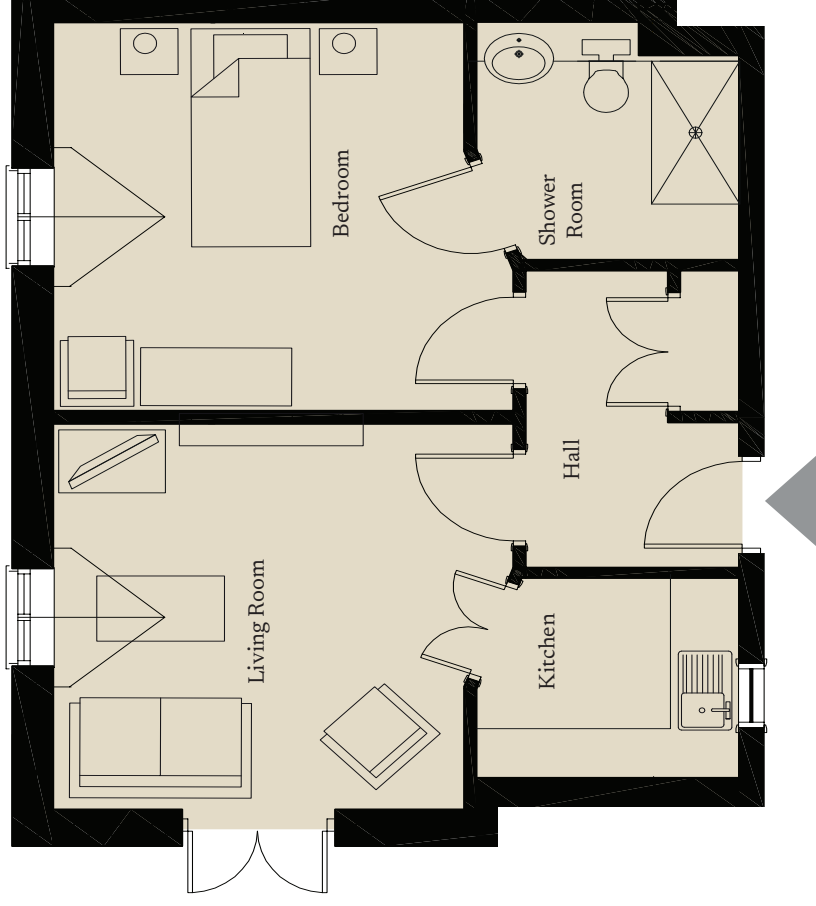
painswick@richmond-villages.com

Richmond Villages Painswick,
Stroud Road, Painswick, Gloucestershire, GL6 6UL

Apartment 2.3

Courtyard level | 448ft²

- Kitchen
6'1" x 7'
- Living Room
11'9" x 12'4"
- Bedroom
11'11" x 12'4"
- En suite
7'3" x 7'



These particulars are intended to give a fair and substantially correct overall description.

Measurements have been taken at 1500mm ceiling height.

All dimensions are approximate. Bedroom measurements include the wardrobe if applicable. Room measurements include bay windows if applicable.

Furniture layout is to give an indicative impression. Although all efforts have been made to ensure its accuracy at time of print dimensions, fixtures, fittings, finishes and specifications are subject to change without notice.

The properties are sold unfurnished.

