

Apartment 5, £240,000

(Other charges apply)

RICHMOND
VILLAGES

Part of Bupa

GF

1



1



EPC - C



1 bedroom ground floor apartment

A spacious ground-floor, one-bedroom apartment at 654 sqft. The apartment is situated close to the main village centre and village facilities.

Specification

- Lounge with double glazed patio doors opening out to a West-facing patio overlooking our park land area with meadow flowers, mowed pathways and mature trees.
- Fitted kitchenette with a Neff under counter fridge.
- Main bedroom with double glazed West-facing window and fitted wardrobes.
- En-suite shower room with large shower area and screen.
- TV and satellite points*.
- Well stocked flower borders and lawns maintained by the Village Gardeners.
- Allocated parking space for one car.

*Satellite subscription not included.

Important Notice: These particulars are intended to give a fair and substantially correct overall description. Other fees and charges apply, please contact the Village Advisers for further details. Properties are sold on a 125 year lease and this property has 119 years remaining.

01332 794 300

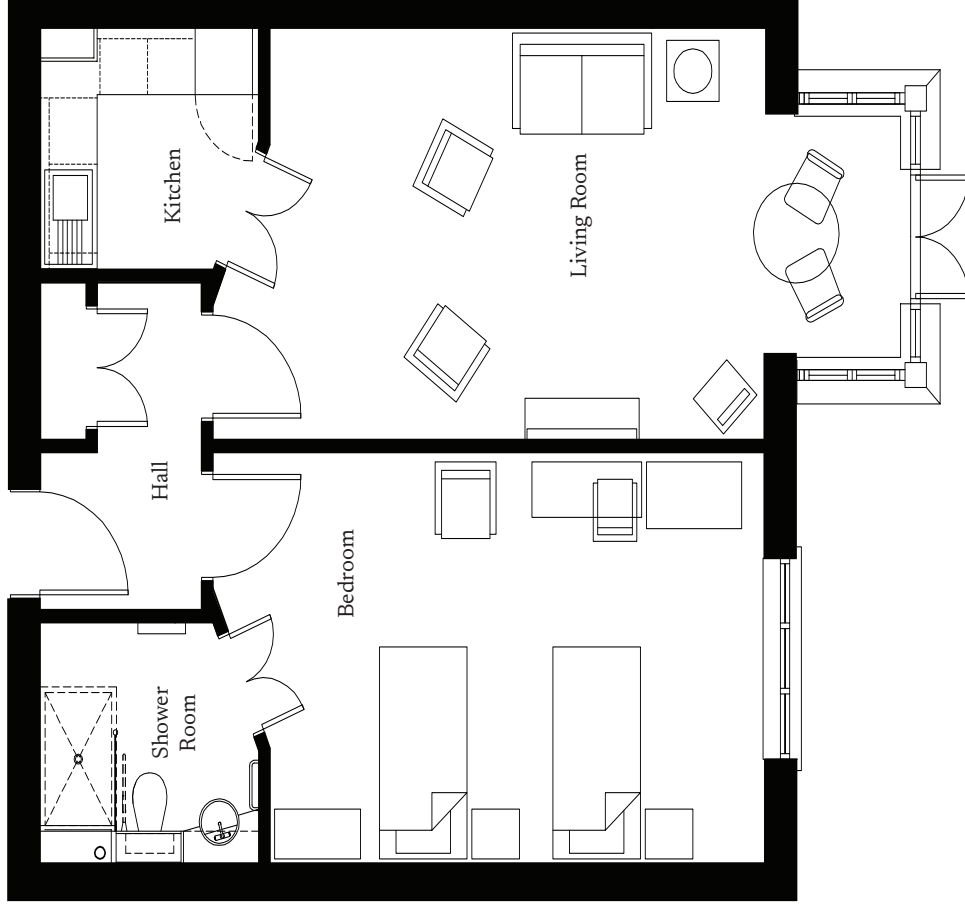
astonontrent@richmond-villages.com

Richmond Villages Aston-on-Trent,
Richmond Drive, Aston-on-Trent, Derbyshire, DE72 2EA

Apartment 5

Ground Floor | 654ft²

Kitchen	2300mm x 2180mm
	7'7" x 7'2"
Living Room	6616mm x 3710mm
	21'8" x 12'2"
Bedroom	5200mm x 3710mm
	17'1" x 12'2"
En suite	2300mm x 2180mm
	7'7" x 7'2"



These particulars are intended to give a fair and substantially correct overall description. Measurements have been taken at 1500mm ceiling height. All dimensions are approximate. Bedroom measurements include the wardrobe if applicable. Room measurements include bay windows if applicable. Furniture layout is to give an indicative impression. Although all efforts have been made to ensure its accuracy at time of print dimensions, fixtures, fittings, finishes and specifications are subject to change without notice. The properties are sold unfurnished.

