

1.8 Village Centre , £260,000*

(Other charges apply)

RICHMOND
VILLAGES

Part of Bupa

GF

1



1



EPC - C



1 bedroom ground floor apartment

A delightful one bedroom Village Suite. The apartment is situated close to the main village center and village facilities. A brand-new home, ready for occupation. This apartment is accessed via stairs.

Specification

- The Sitting Room benefits from a bay window overlooking the featured patio whilst the bedroom's French doors open out onto the open space.
- The fitted kitchen features wall and base units with under cupboard lighting, stainless steel sink and drainer, work surfaces and built in fridge.
- Main bedroom with French doors leading onto a patio.
- En-suite shower room with large shower area and screen.
- TV and satellite points*.
- Well stocked flower borders and lawns maintained by the Village Gardeners.
- Allocated parking space for one car.



*Satellite subscription not included.

Important Notice: These particulars are intended to give a fair and substantially correct overall description. Other fees and charges apply, please contact the Village Advisers for further details. Properties are sold on a 125 year lease and this property has 107 years remaining.

01452 813902

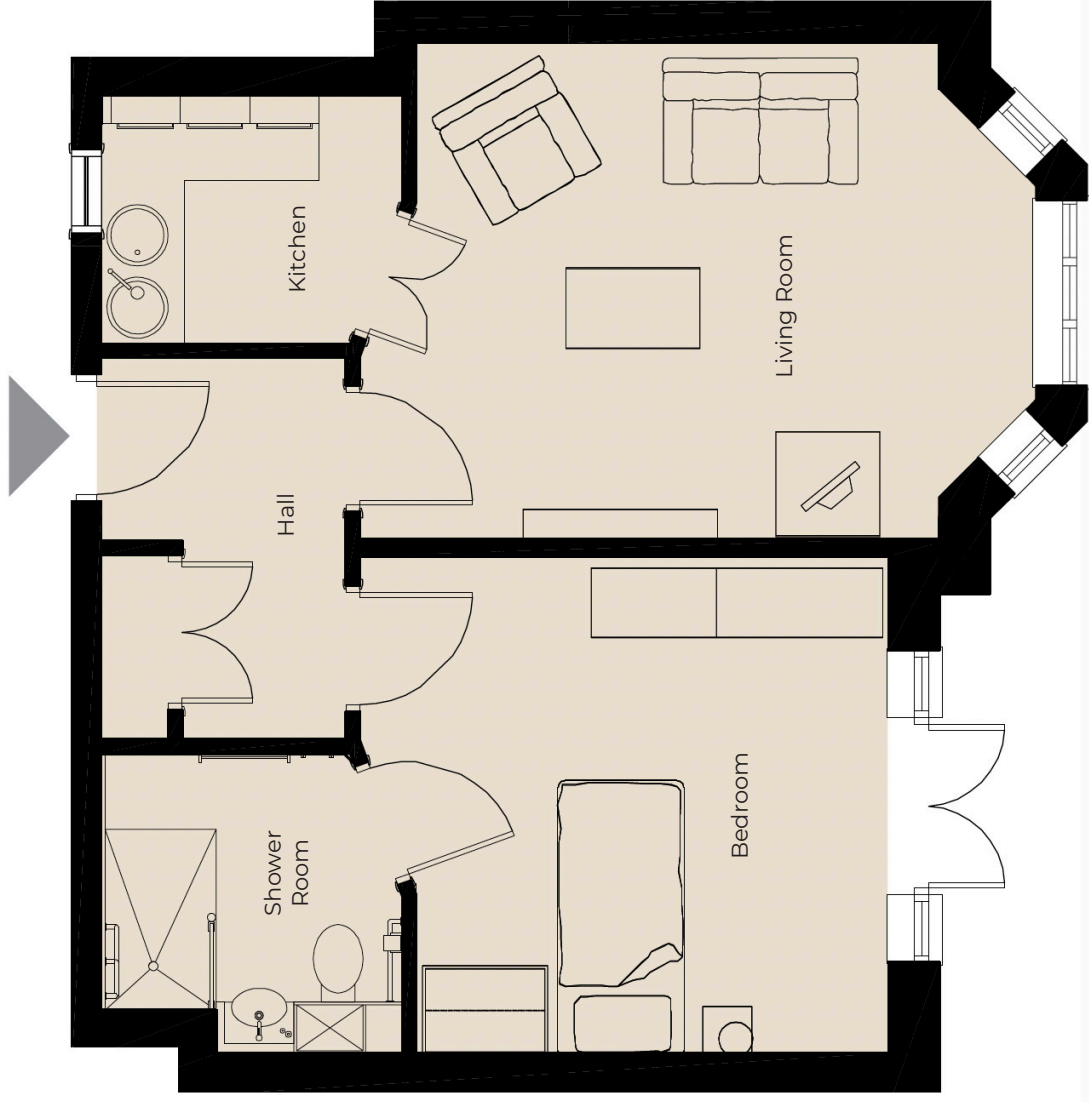
painswick@richmond-villages.com

Richmond Villages Painswick,
Stroud Road, Painswick, Stroud, GL6 6UL

Village Centre 1.8

Ground Floor | 473sqft

- Kitchen**
1788mm x 2142mm
5'10" x 7'
- Living Room**
3550mm x 4440mm
11'8" x 14'7"
- Bedroom**
3584mm x 3781mm
11'9" x 12'5"
- En suite**
2161mm x 214mm
7'1" x 7'



These particulars are intended to give a fair and substantially correct overall description.

Measurements have been taken at 1500mm ceiling height.

All dimensions are approximate. Bedroom measurements include the wardrobe if applicable. Room measurements include bay windows if applicable.

Furniture layout is to give an indicative impression. Although all efforts have been made to ensure its accuracy at time of print dimensions, fixtures, fittings, finishes and specifications are subject to change without notice.

The properties are sold unfurnished.

