

79 Mill Stream Mews, £660,000*

(Other charges apply)

**RICHMOND
VILLAGES**

Part of Bupa

GF

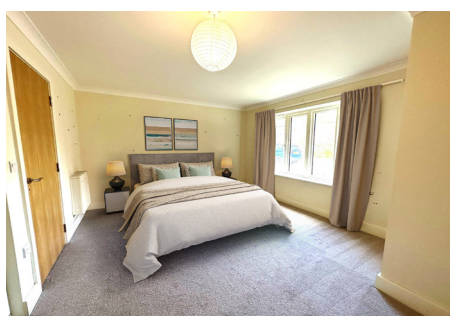
2



2



EPC -B

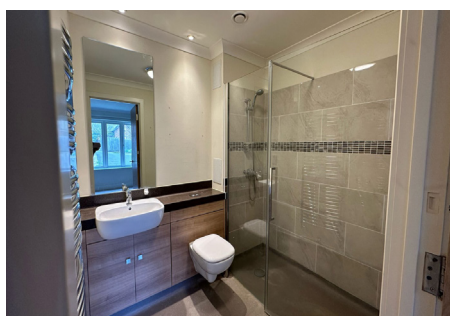


2 bedroom ground floor apartment

Richmond Villages Letcombe Regis is pleased to offer for sale 79 Mill Stream Mews, a large two-bedroom ground floor property in an ever-popular phase of the development here at Letcombe Regis. The property is available with no onward chain, has multiple accesses to a south facing patio area and plenty of space throughout.

Specification

- Large two-bedroom, ground floor retirement apartment
- Ensuites to both bedrooms
- The contemporary kitchen adjoins the dining space and has been superbly designed to offer a range of eye and base level units.
- The sitting room is large and flooded with natural light
- South facing patio area
- Outstanding on-site facilities including Wellness Spa
- Centred around community & wellbeing
- Beautifully Manicured Gardens & Bowling Green
- Allocated parking space for one car
- Desirable location within nature reserve
- No onward chain
- Council Tax Band D
- Dual aspect



*Satellite subscription not included.

Important Notice: These particulars are intended to give a fair and substantially correct overall description. **Other fees and charges apply**, please contact the Village Advisers for further details. Properties are sold on a 125 year lease and this property has 116 years remaining.

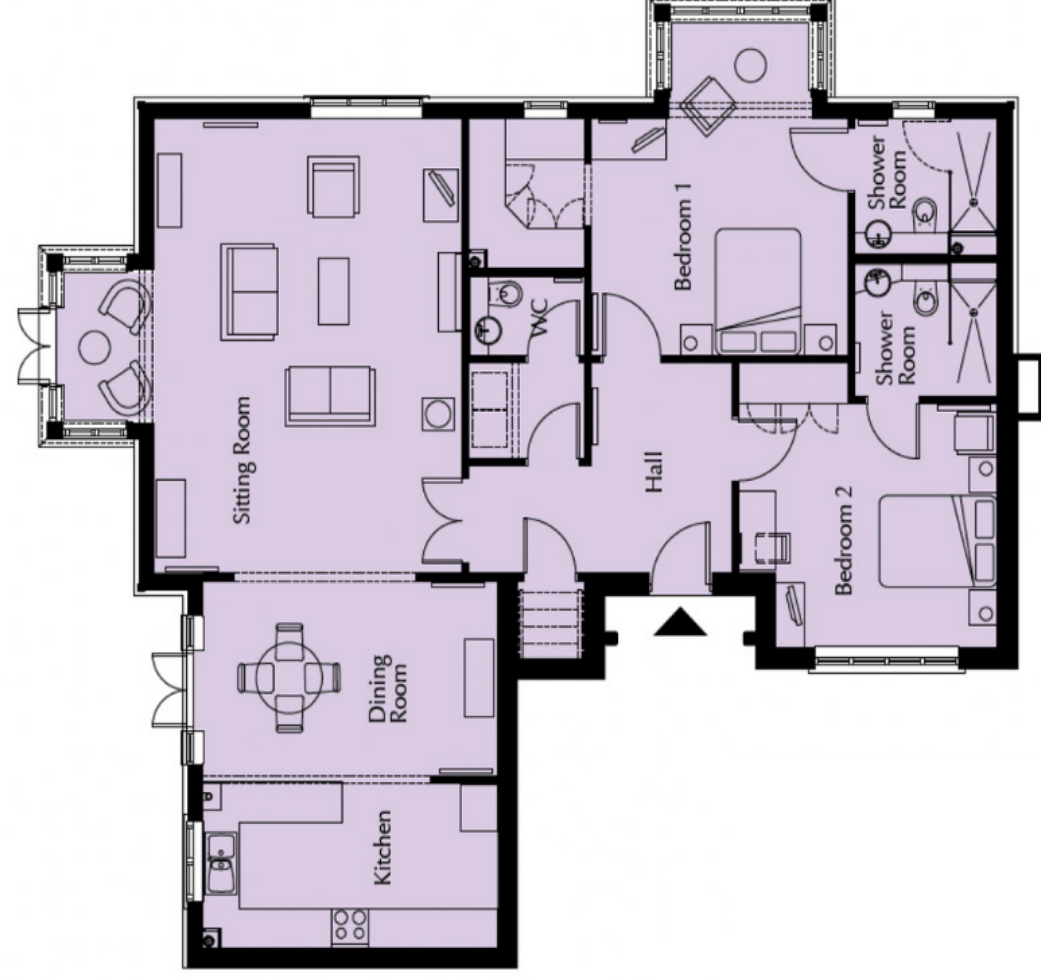
01235 773 970

letcomberegis@richmond-villages.com

Richmond Villages Letcombe Regis,
South Street, Letcombe Regis, Oxfordshire OX12 9RG

79 Mill Stream Mews

Ground Floor | 132.7m² - 1428ft²



Kitchen	2485mm x 4767 mm 8'2" x 15'8"
Dining Room	2932mm x 4767mm 9'7" x 15'8"
Sitting Room	6854mm x 6445 mm 22'6" x 21'2"
Bedroom 1	5044mm x 4142mm 16'7" x 13'7"
Shower Room 1	2300mm x 2050mm 7'7" x 6'9"
Bedroom 2	3681 mm x 4174mm 12'1" x 13'8"
Shower Room 2	2300mm x 2010mm 7'7" x 6'7"

These particulars are intended to give a fair and substantially correct overall description. Measurements have been taken at 1500mm skirting height.

All dimensions are approximate. Bedroom measurements include the wardrobe if applicable. Room measurements include bay windows if applicable.

Furniture layout is to give an indicative impression. Although all efforts have been made to ensure its accuracy at time of print dimensions, fixtures, fittings, finishes and specifications are subject to change without notice.

The properties are sold unfurnished.

