

Apartment 30 – £350,000

RICHMOND
VILLAGES

Part of Bupa

(Other charges apply)



EPC - C



2 Bedroom Independent Living Apartment

Located in the corner of the Bowling Green and having just undergone an extensive period of refurbishment, No 30 is a beautiful 2 bedroom Ground Floor property ready to move straight into.

Specification

- Living room with a large window and feature fireplace with attractive surround.
- Modern kitchen with French Doors leading to a small patio area.
- Main bedroom with a modern en-suite shower room.
- Second bedroom is a flexible space.
- Lovely en-suite with corner shower cubicle.
- Laid lawns and well stocked flower borders maintained by the Village Gardeners.
- Allocated off road parking space for car owners.



Important Notice: These particulars are intended to give a fair and substantially correct overall description. **Other fees and charges apply**, please contact the Village Advisers for further details. Properties are sold on a 125 year lease and this property has 112 years remaining.

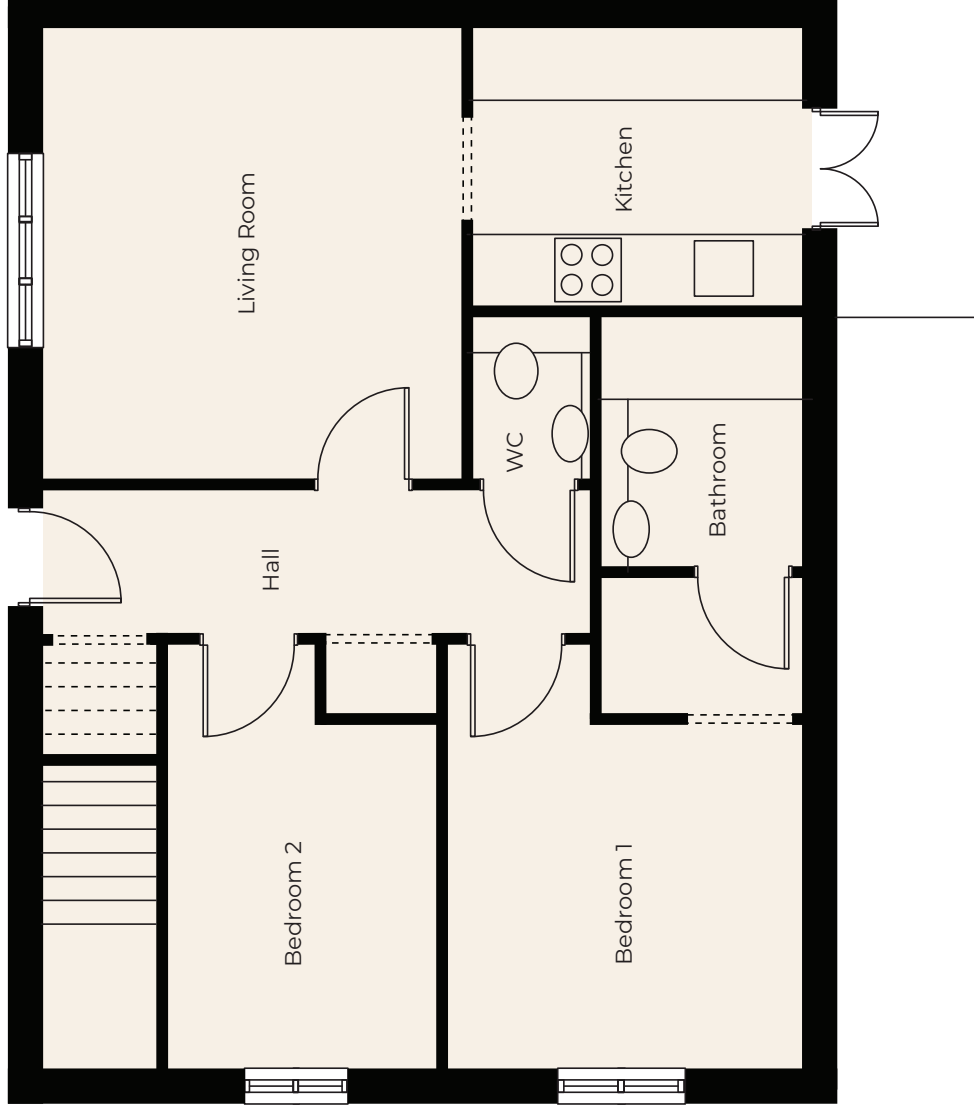
01270 629080

nantwich@richmond-villages.com

Richmond Villages Nantwich,
St Joseph's Way, Nantwich, Cheshire CW5 6LZ

Apartment 30

Ground Floor | 616ft²



Kitchen	2895mm x 2387mm 9'6" x 7'10"
Living Room	3733mm x 3835mm 12'3" x 12'7"
Bedroom 1	3175mm x 2997mm 10'5" x 9'10"
Bedroom 2	2311mm x 3022mm 7'7" x 9'11"
Bathroom	1803mm x 2133mm 5'11" x 7'
WC	1041mm x 1422mm 3'5" x 4'8"

These particulars are intended to give a fair and substantially correct overall description.

Measurements have been taken at 1500mm skimming height.

All dimensions are approximate. Bedroom measurements include the wardrobe if applicable. Room measurements include bay windows if applicable.

Furniture layout is to give an indicative impression. Although all efforts have been made to ensure its accuracy at time of print dimensions, fixtures, fittings, finishes and specifications are subject to change without notice.

The properties are sold unfurnished.

