

26 Brook View, £345,00*

(Other charges apply)

RICHMOND
VILLAGES

Part of Bupa

2F

2



2



EPC - C



1 bedroom first floor apartment

Overlooking the beautiful nature reserve and Letcombe Brook, Richmond Villages Letcombe Regis is pleased to offer this charming one bedroom apartment with a balcony. The property is well situated within easy access of our outstanding on-site facilities including the restaurant, bar, reception, art studio, library, Wellness Spa, beautifully manicured gardens, bowling green, café and shop.

Specification

- Stylish one bedroom, first floor apartment
- Spacious principal bedroom with en-suite wet room
- The tastefully designed living / dining room is well proportioned and features dual aspect windows and a door leading to a private balcony
- Outstanding on-site facilities including Wellness Spa
- Centred around community & wellbeing
- Beautifully Manicured Gardens & Bowling Green
- Allocated parking space for one car
- Desirable location
- Westerly Aspect Views over the Nature Reserve and Letcombe Brook
- Immaculate Presentation
- Council Tax Band - C



*Satellite subscription not included.

Important Notice: These particulars are intended to give a fair and substantially correct overall description. **Other fees and charges apply**, please contact the Village Advisers for further details. Properties are sold on a 125 year lease and this property has 110 years remaining.

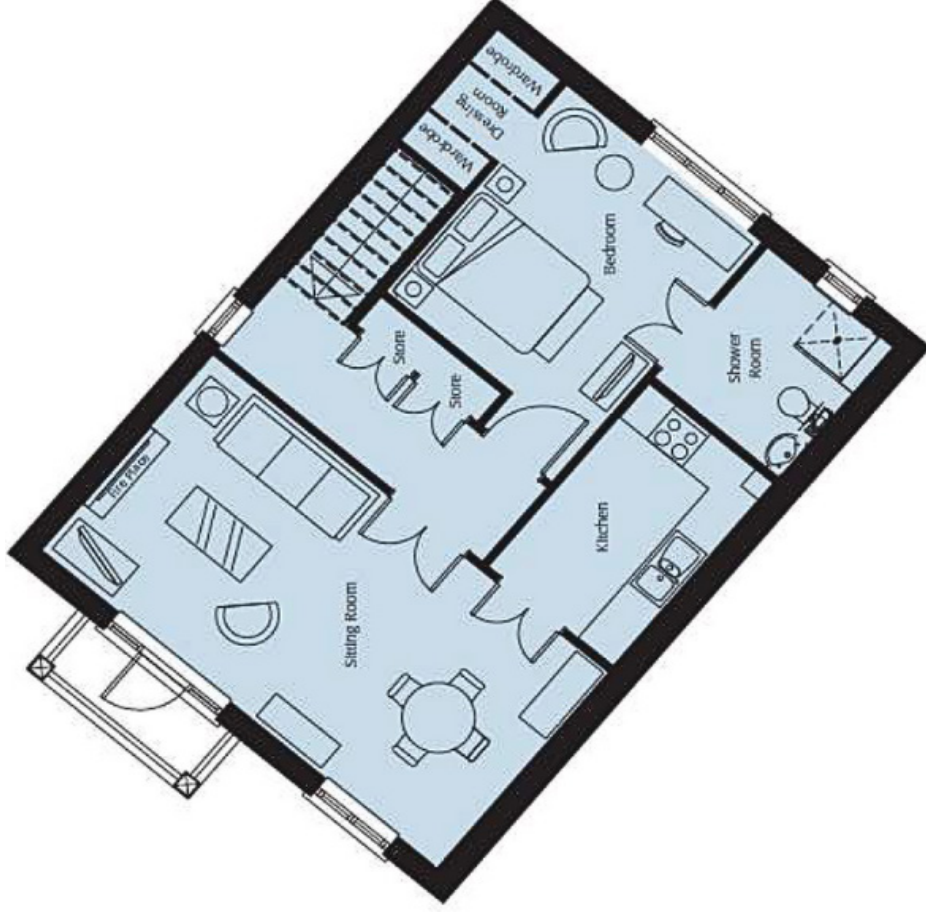
01235 773 970

letcomberegis@richmond-villages.com

Richmond Villages Letcombe Regis,
South Street, Letcombe Regis, Oxfordshire OX12 9RG

26 Brook View

First Floor | 689ft²



Sitting Room

6723 x 3462mm

20'1" x 11'4"

Kitchen

2116 x 3250mm

6'11" x 10'8"

Bedroom

3315 x 4250mm

10'7" x 13'11"

Shower Room

2116 x 2300mm

6'11" x 7'7"

These particulars are intended to give a fair and substantially correct overall description. Measurements have been taken at 1500mm skilling height.

All dimensions are approximate. Bedroom measurements include the wardrobe if applicable. Room measurements include bay windows if applicable. Furniture layout is to give an indicative impression. Although all efforts have been made to ensure its accuracy at time of print dimensions, fixtures, fittings, finishes and specifications are subject to change without notice.

The properties are sold unfurnished.