

7 Bradmore Gardens, £375,000

RICHMOND
VILLAGES

Part of Bupa

GF

2



2



EPC - C



2 bedroom ground floor apartment

A spacious ground floor, two-bedroom apartment at 1084 sqft. The apartment is situated close to the main village center and village facilities.

Specification

- A bright and large living room with French doors leading to a north-facing patio. Feature fireplace.
- Modern fitted kitchen with range of wall and base units and integrated appliances including fridge/freezer, washer/dryer, dishwasher and oven and hob.
- Master bedroom with south-facing window.
- Second bedroom with north-facing window.
- En-suite shower room with large shower area and screen.
- Bathroom with low level bath with overhead shower and screen.
- TV and satellite points*.
- Well stocked flower borders and lawns maintained by the Village Gardeners.
- Allocated parking space for one car.



*Satellite subscription not included.

Important Notice: These particulars are intended to give a fair and substantially correct overall description. **Other fees and charges apply**, please contact the Village Advisers for further details. Properties are sold on a 125 year lease and this property has 118 years remaining.

01332 794300

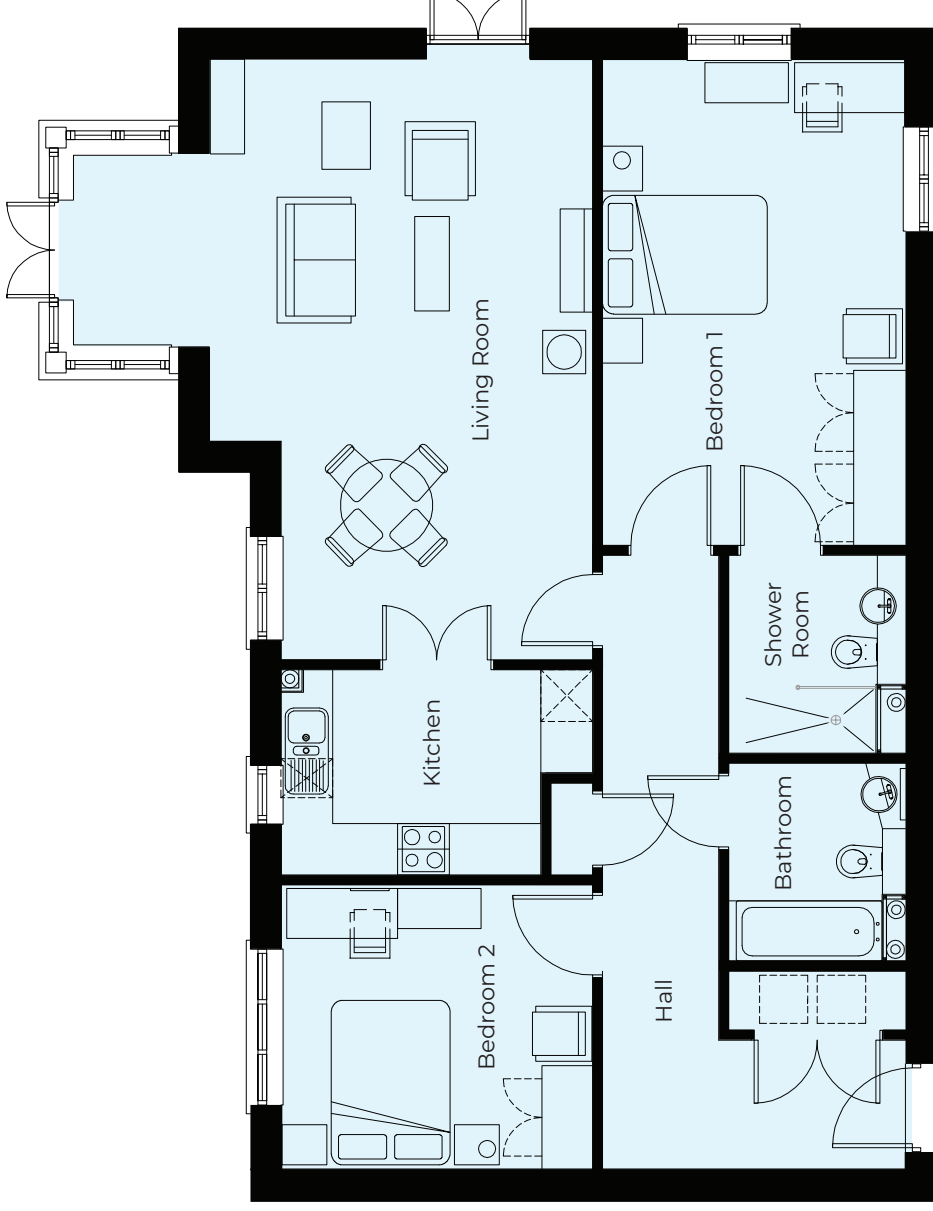
astonontrent@richmond-villages.com

Richmond Villages Aston-on-Trent,
Richmond Drive, Aston-on-Trent, Derbyshire, DE72 2EA

7 Bradmore Gardens

Ground Floor | 100.7m² – 1084ft²

Kitchen	3585mm x 2385mm 11'9" x 7'10"
Living Room	6985mm x 5991mm 22'11" x 19'8"
Bedroom 1	5655mm x 3515mm 18'7" x 11'6"
Shower Room	2300mm x 2050mm 7'7" x 6'9"
Bedroom 2	3620mm x 2050mm 11'11" x 10'10"
Bathroom	2300mm x 2050mm 7'7" x 6'9"



These particulars are intended to give a fair and substantially correct overall description.

Measurements have been taken at 1500mm skimming height.

All dimensions are approximate. Bedroom measurements include the wardrobe if applicable. Room measurements include bay windows if applicable.

Furniture layout is to give an indicative impression. Although all efforts have been made to ensure its accuracy at time of print dimensions, fixtures, fittings, finishes and specifications are subject to change without notice.

The properties are sold unfurnished.

