

# Apartment 13 – £285,000

(Other charges apply)

RICHMOND  
VILLAGES

Part of Bupa

GF

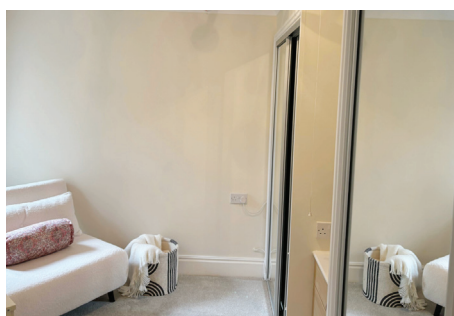
2



1



EPC - D



## 2 Bedroom Independent Living Apartment

Richmond Villages are pleased to offer for sale this spacious, two bedroom, ground floor apartment with French doors leading to a south facing patio. The apartment is located in the courtyard amongst flower borders, and is close to the village centre with outdoor patio, hair salon and therapy room, restaurant and reception.

### Specification

- Bright South facing sitting room with French Doors leading to a patio. Stone effect feature fireplace and electric fire.
- Modern kitchen with a range of wall and base units. Appliances include a fridge, oven and hob.
- Main bedroom with private south facing views.
- Second bedroom with fitted wardrobes and dressing table.
- Shower room with walk in corner shower, WC, wash basin, bidet and heated towel rail.
- Laid lawns and well stocked flower borders maintained by the Village Gardeners.
- Allocated off road parking space for car owners.

Important Notice: These particulars are intended to give a fair and substantially correct overall description. Other fees and charges apply, please contact the Village Advisers for further details. Properties are sold on a 125 year lease and this property has 107 years remaining.

01270 629080

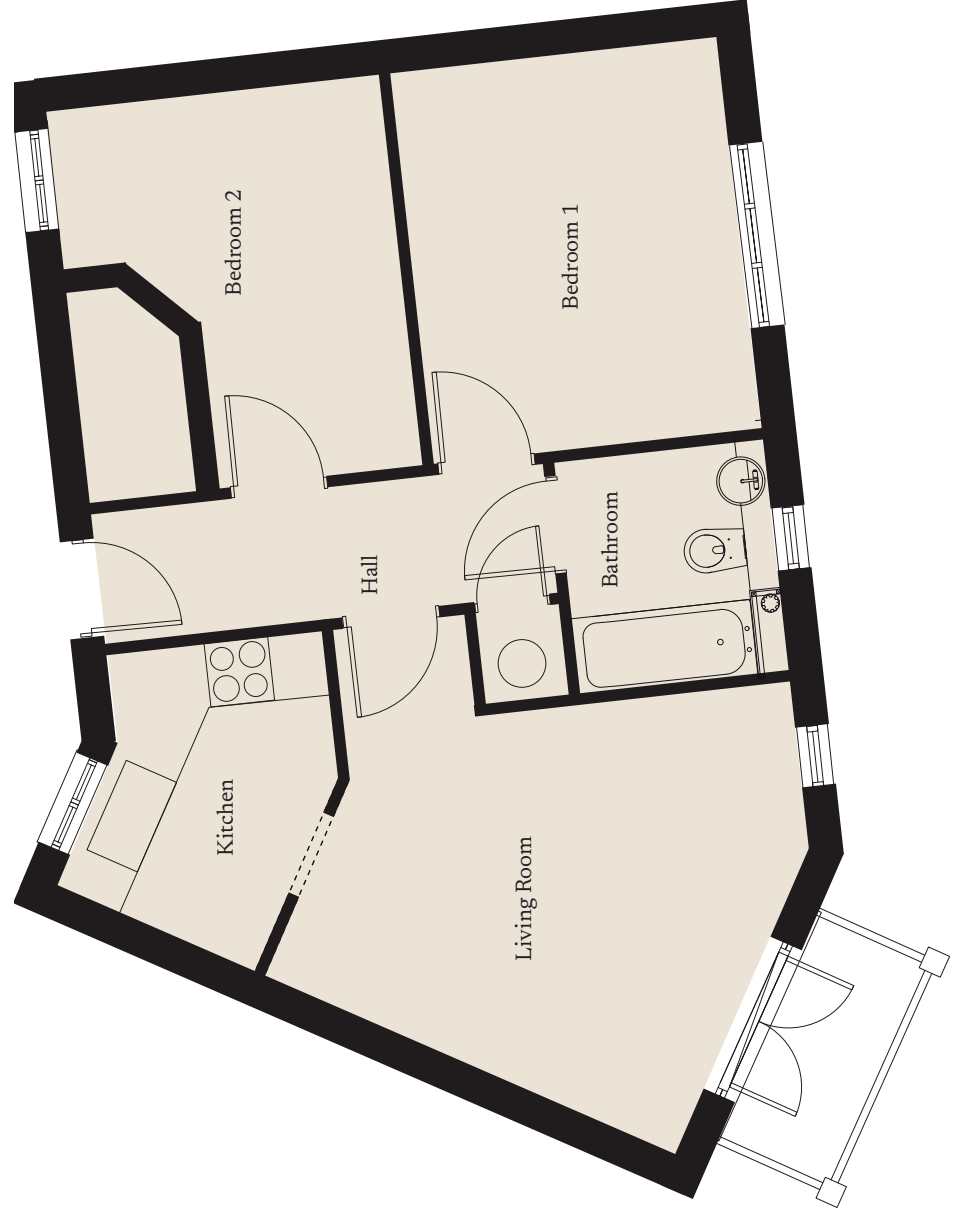
[nantwich@richmond-villages.com](mailto:nantwich@richmond-villages.com)

Richmond Villages Nantwich,  
St Joseph's Way, Nantwich, Cheshire CW5 6LZ

# Apartment 13

Ground Floor | 604ft<sup>2</sup>

|              |                 |
|--------------|-----------------|
| Kitchen      | 2844mm x 2006mm |
|              | 9'4" x 6'7"     |
| Sitting Room | 4064mm x 4140mm |
|              | 13'4" x 13'7"   |
| Bedroom 1    | 3657mm x 3048mm |
|              | 12' x 10'       |
| Bedroom 2    | 3657mm x 3048mm |
|              | 12' x 10'       |
| Shower Room  | 2159mm x 1955mm |
|              | 7'1" x 6'5"     |



These particulars are intended to give a fair and substantially correct overall description. Measurements have been taken at 1500mm skirting height. All dimensions are approximate. Bedroom measurements include the wardrobe if applicable. Room measurements include bay windows if applicable. Furniture layout is to give an indicative impression. Although all efforts have been made to ensure its accuracy at time of print dimensions, fixtures, fittings, finishes and specifications are subject to change without notice. The properties are sold unfurnished.

