

Apartment 8, £195,500

(Other charges apply)

RICHMOND
VILLAGES

Part of Bupa

GF

1



1



EPC - D



1 Bedroom Ground Floor Apartment

A cosy, one-bedroom ground floor independent living apartment conveniently located on the edge of The Courtyard, close to the main village center and village facilities.

Specification

- A lovely, welcoming and cosy living room offering an East-facing window. Feature fireplace.
- Well-equipped fitted kitchen with range of wall and base units.
- Spacious main bedroom with built-in wardrobes.
- Shower room with large shower area and screen.
- Well stocked flower borders and lawns maintained by the Village Gardeners.
- Allocated parking space for one car where applicable.



Important Notice: These particulars are intended to give a fair and substantially correct overall description. Other fees and charges apply, please contact the Village Advisers for further details. Properties are sold on a 125 year lease and this property has 110 years remaining.

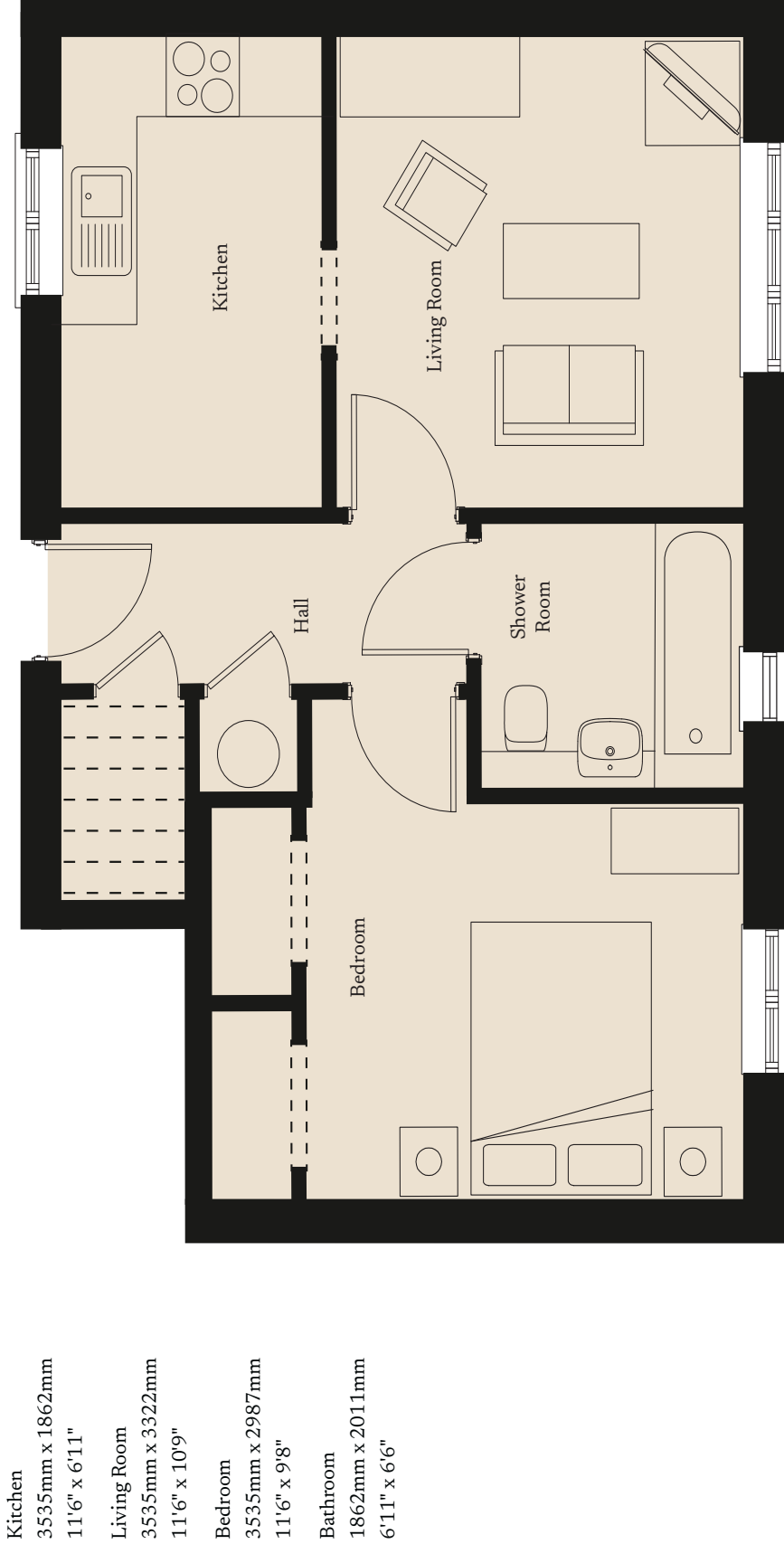
01270 629 080

nantwich@richmond-villages.com

Richmond Villages Nantwich,
St Joseph's Way, London Road, Nantwich, Cheshire, CW5 6LZ

Apartment 8

Ground Floor | 469ft²



These particulars are intended to give a fair and substantially correct overall description.

Measurements have been taken at 1500mm ceiling height.

All dimensions are approximate. Bedroom measurements include the wardrobe if applicable. Room measurements include bay windows if applicable.

Furniture layout is to give an indicative impression. Although all efforts have been made to ensure its accuracy at time of print dimensions, fixtures, fittings, finishes and specifications are subject to change without notice.

The properties are sold unfurnished.

