

Apartment 8, £235,000

(Other charges apply)

RICHMOND
VILLAGES

Part of Bupa



1



1



EPC - D



1 bedroom ground floor apartment

A cosy ground-floor two-bedroom apartment at 46 sqm. The apartment is situated close to the main village center and village facilities.

Specification

- A welcoming living room offering an East-facing window. Feature fireplace.
- Well-equipped fitted kitchen with range of wall and base units and integrated appliances including fridge/freezer, oven and hob.
- Main bedroom with built-in wardrobes.
- Shower room with large shower area and screen.
- TV and satellite points*.
- Well stocked flower borders and lawns maintained by the Village Gardeners.
- Allocated parking space for one car.



*Satellite subscription not included.

Important Notice: These particulars are intended to give a fair and substantially correct overall description. Other fees and charges apply, please contact the Village Advisers for further details. Properties are sold on a 125 year lease and this property has 110 years remaining.

01270 629 080

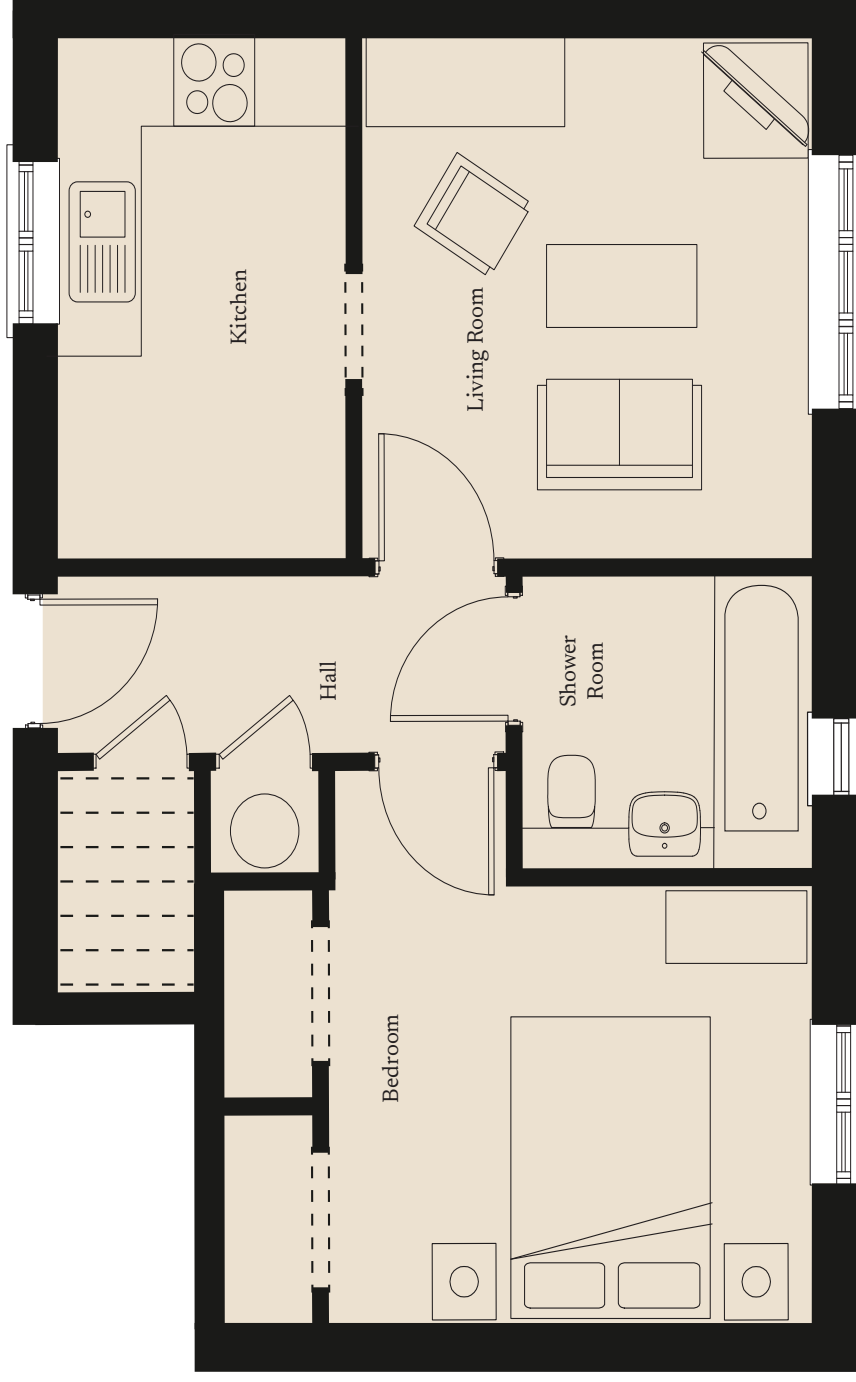
nantwich@richmond-villages.com

Richmond Villages Nantwich,
St Joseph's Way, London Road, Nantwich, Cheshire, CW5 6LZ

Apartment 8

Ground Floor | 469ft²

- Kitchen**
3535mm x 1862mm
11'6" x 6'11"
- Living Room**
3535mm x 3322mm
11'6" x 10'9"
- Bedroom**
3535mm x 2987mm
11'6" x 9'8"
- Bathroom**
1862mm x 2011mm
6'1" x 6'6"



These particulars are intended to give a fair and substantially correct overall description.

Measurements have been taken at 1500mm ceiling height.

All dimensions are approximate. Bedroom measurements include the wardrobe if applicable. Room measurements include bay windows if applicable.

Furniture layout is to give an indicative impression. Although all efforts have been made to ensure its accuracy at time of print dimensions, fixtures, fittings, finishes and specifications are subject to change without notice.

The properties are sold unfurnished.

