

69 Tuckers Court, £485,000

Other charges apply*

RICHMOND
VILLAGES

Part of Bupa

GF

2



2



EPC - B



2 bedroom ground floor apartment

A spacious ground-floor two-bedroom apartment at 973.1ft². The apartment offers a private entrance with a South facing patio, it is situated close to the main village center and village facilities.

Specification

- A bright and large living room with French doors leading to a South facing patio. Electric fire with Bath stone-effect surround.
- Well-equipped kitchen with range of wall and base units, under cupboard lighting, stainless steel sink and drainer, Neff double oven and fridge/freezer.
- Main bedroom is light and airy with modern en-suite shower room.
- Second bedroom is generously sized.
- En-suite shower room with fully fitted vanity unit and heated towel rail.
- Bathroom with low level bath with overhead shower and screen.
- TV and satellite points*.
- Well stocked flower borders and lawns maintained by the Village Gardeners.
- Allocated parking space for one car.



*Satellite subscription not included.

Important Notice: These particulars are intended to give a fair and substantially correct overall description. **Other fees and charges apply**, please contact the Village Advisers for further details. Properties are sold on a 125 year lease and this property has 117 years remaining.

01993 894 000

witney@richmond-villages.com

Richmond Villages Witney,
Coral Springs Way, Witney, OX28 5DG

69 Tuckers Way

Ground Floor

Kitchen

3972mm x 2100mm

13' x 6'11"

Living Room

5612mm x 5050mm (into bay)

18'5" x 16'7"

Bedroom 1

5100mm x 3300mm

16'9" x 10'10"

Bedroom 2

3800mm x 2955mm

12'6" x 9'8"

Shower Room

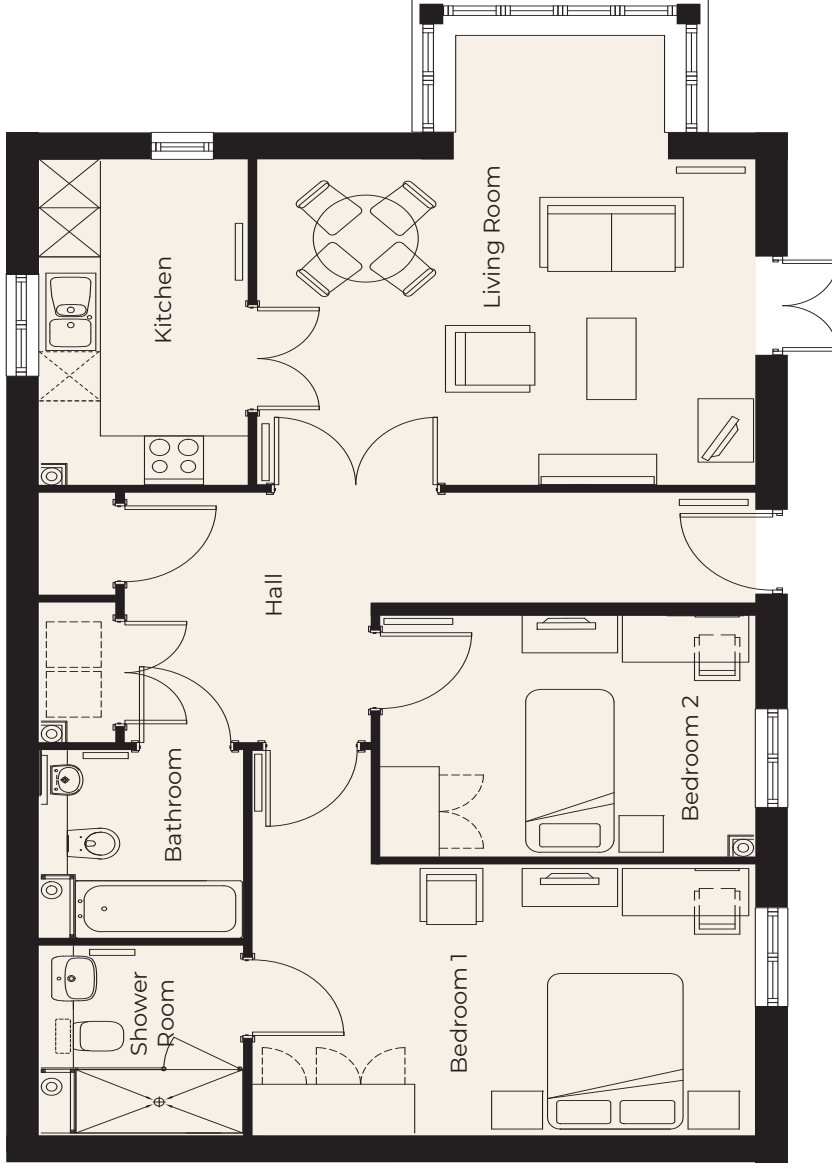
2300mm x 2050mm

7'7" x 6'9"

Bathroom

2300mm x 2045mm

7'7" x 6'9"



These particulars are intended to give a fair and substantially correct overall description.

Measurements have been taken at 1500mm skimming height.

All dimensions are approximate. Bedroom measurements include the wardrobe if applicable. Room measurements include bay windows if applicable.

Furniture layout is to give an indicative impression. Although all efforts have been made to ensure its accuracy at time of print dimensions, fixtures, fittings, finishes and specifications are subject to change without notice.

The properties are sold unfurnished.

