

29 Coral Springs Way, £330,000

RICHMOND
VILLAGES

Part of Bupa

SF

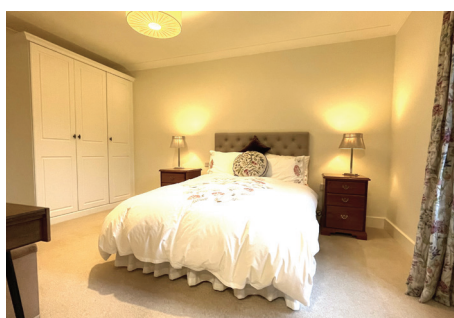
1



1



EPC - C



1 bedroom apartment

Richmond Villages Witney are pleased to offer for resale this spacious one-bedroom independent living apartment, which offers wonderful living space and its own balcony. The apartment has close access to all communal facilities including the reception, restaurant, bar and coffee area, library, wellness spa and terraces.

Specification

- Spacious open-plan living/dining room with remote controlled electric fire and Bath stone effect surround, plus double-glazed doors leading to a private balcony.
- Modern fitted kitchen with granite worktops, under cupboard lighting, stainless steel sink and drainer, plus built-in appliances including; Neff double oven, ceramic hob, dishwasher and Neff fridge/freezer.
- Large principle bedroom with fitted wardrobes.
- En-suite shower room with large shower area and glazed screen. White suite comprising low level WC and wash basin set within a fully fitted vanity unit, fitted wall mirror, floor-to-ceiling tiles and heated chrome electric towel rail.
- Spacious entrance hall with storage and laundry cupboards.
- Well stocked flower borders and lawns maintained by the Village Gardeners.
- Allocated parking space for one car.
- Council band: C



*Satellite subscription not included.

Important Notice: These particulars are intended to give a fair and substantially correct overall description. **Other fees and charges apply**, please contact the Village Advisers for further details. Properties are sold on a 125 year lease and this property has 117 years remaining.

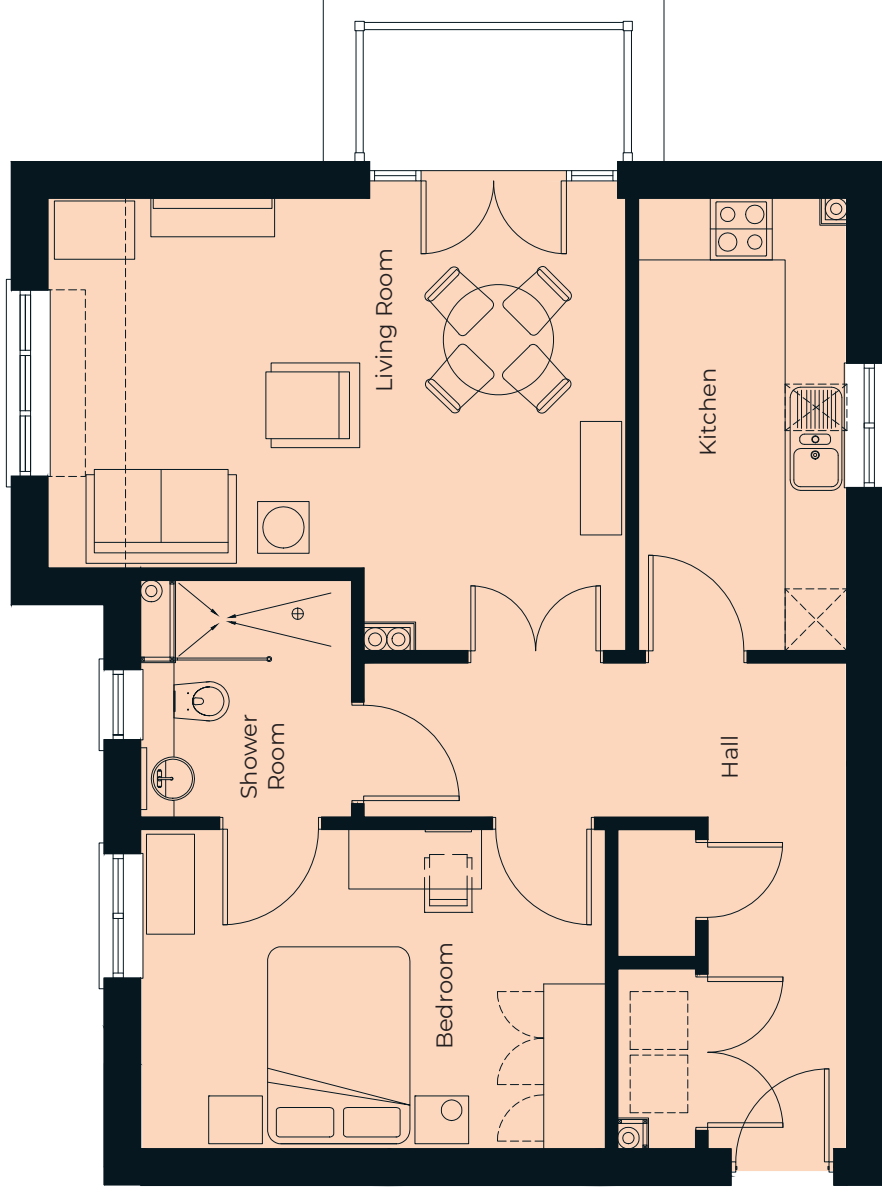
01993 894000
witney@richmond-villages.com

Richmond Villages Witney,
Coral Springs Way, Witney, Oxfordshire, OX28 5DG

Apartment 29

Second Floor | 66.40m² - 714.7ft²

- Kitchen**
4390mm x 2050mm
14'5" x 6'9"
- Living Room**
5611mm x 4390mm
18'5" x 14'5"
- Bedroom**
4511mm x 3065mm
14'10" x 10'1"
- Bedroom 2**
4242mm x 3749mm
13'11" x 12'4"
- Shower Room**
2300mm x 2050mm
7'7" x 6'9"



These particulars are intended to give a fair and substantially correct overall description.

Measurements have been taken at 1500mm skimming height.

All dimensions are approximate. Bedroom measurements include the wardrobe if applicable. Room measurements include bay windows if applicable.

Furniture layout is to give an indicative impression. Although all efforts have been made to ensure its accuracy at time of print dimensions, fixtures, fittings, finishes and specifications are subject to change without notice.

The properties are sold unfurnished.

