

# 2 Bedroomed Cottage, £325,000

(Other charges apply)

RICHMOND  
VILLAGES

Part of Bupa



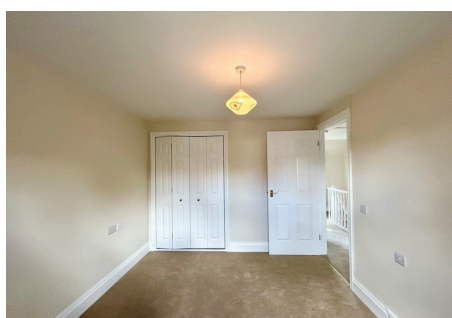
2



2



EPC - C



## 2 Bedroomed Cottage

A fully refurbished 2 bedroomed cottage. The accommodation features an entrance hall, sitting / dining room. Modern kitchen, main bedroom with en suite shower room, a second double bedroom and guest wc. The apartment is situated close to the main village center and village facilities.

### Specification

- Spacious and bright living room with windows overlooking the surrounding gardens. Modern remote controlled electric fire with feature stone effect surround.
- Modern fitted kitchen with wood effect work surfaces, fridge/freezer.
- Separate laundry area with washing machine and tumble dryer.
- Large main bedroom with built-in wardrobes.
- En-suite shower room with walk-in shower and fully fitted white suite.
- Second bedroom with window
- Downstairs wc and wash basin.
- Entrance hall with large storage cupboard and utility cupboard with Bosch washing machine and Bosch tumble dryer.
- Modern electric radiators in all rooms. TV points.
- Well stocked flower borders and lawns maintained by the Village Gardeners.
- Allocated parking space for car owners.



Important Notice: These particulars are intended to give a fair and substantially correct overall description. **Other fees and charges apply**, please contact the Village Advisers for further details. Properties are sold on a 125 year lease and this property has 125 years remaining.

01270 629 080

nantwich@richmond-villages.com

Richmond Villages Nantwich,  
St Joseph's Way, Nantwich, Cheshire CW5 6LZ

# 2 Richmond Villages

- Kitchen**  
2987mm x 2621mm  
9'8" x 8'6"
- Living Room**  
5221mm x 3596mm  
16'11" x 11'8"
- Bedroom 1**  
2987mm x 3382mm  
9'8" x 10'11"
- Bedroom 2**  
2987mm x 2133mm  
9'8" x 6'10"
- Bathroom**  
2011mm x 2163mm  
6'6" x 6'11"
- WC**  
2163mm x 1248mm  
6'11" x 3'11"

688ft<sup>2</sup>



These particulars are intended to give a fair and substantially correct overall description.

Measurements have been taken at 1500mm skimming height.

All dimensions are approximate. Bedroom measurements include the wardrobe if applicable. Room measurements include bay windows if applicable.

Furniture layout is to give an indicative impression. Although all efforts have been made to ensure its accuracy at time of print dimensions, fixtures, fittings, finishes and specifications are subject to change without notice.

The properties are sold unfurnished.

