

33 Village Centre - £240,000

RICHMOND
VILLAGES

Part of Bupa

GF

1



1



EPC - C



1 bedroom assisted living apartment

Richmond Villages are pleased to offer this one bedroom, first floor apartment boasting a large west-facing balcony with beautiful views over the lake. This apartment is in a desirable location within the retirement village with easy access to the restaurant, bar, reception, art studio, library, wellness spa, outdoor seating areas, bowling green, café and shop.

Specification

- Dual aspect living room with French doors leading to large west-facing balcony. Remote controlled electric fire and Bath stone effect surround.
- Modern fitted kitchenette with under cupboard lighting and built in fridge.
- Main bedroom with built in wardrobe and double glazed window.
- En-suite shower room with walk-in shower and fitted sanitary ware.
- Entrance hall with storage cupboard.
- Central heating radiators in all rooms.
- TV and satellite points*
- Laid lawns and well stocked flower borders maintained by the Village Gardeners.
- Allocated parking space for one car.



*Satellite subscription not included.

Important Notice: These particulars are intended to give a fair and substantially correct overall description. **Other fees and charges apply**, please contact the Village Advisers for further details. CGI imagery is used for guidance and illustrative purposes only and does not represent the specific apartment for sale. Properties are sold on a 125 year lease and this property has 114 years remaining.

01235 773970

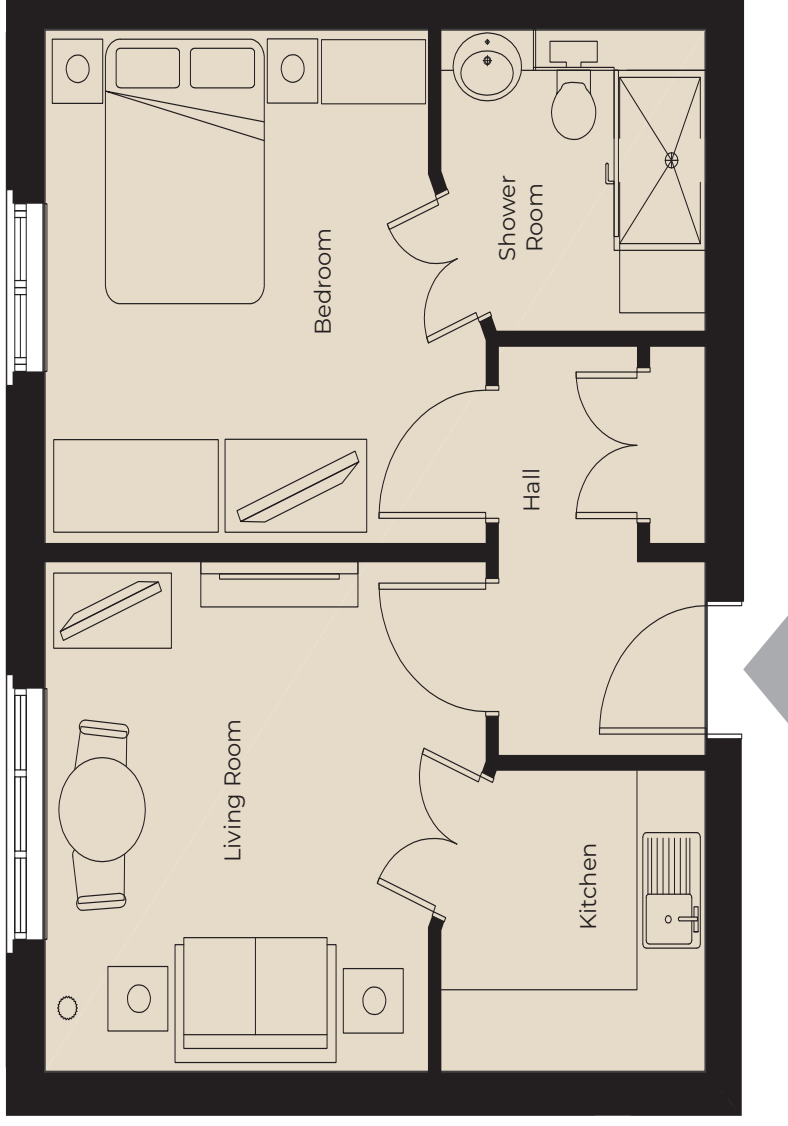
letcomberegis@richmond-villages.com

Richmond Villages Letcombe Regis,
South Street, Letcombe Regis, Oxfordshire OX12 9RG

33 Village Centre

First Floor | 545ft²

- Kitchen**
2300mm x 2180mm
7'7" x 7'2"
- Living Room**
4775mm x 3657mm
15'8" x 12'
- Bedroom**
4775mm x 3657mm
15'8" x 12'
- Shower Room**
2300mm x 2180mm
7'7" x 7'2"



These particulars are intended to give a fair and substantially correct overall description. Measurements have been taken at 1500mm skimming height. All dimensions are approximate. Bedroom measurements include the wardrobe if applicable. Room measurements include bay windows if applicable. Furniture layout is to give an indicative impression. Although all efforts have been made to ensure its accuracy at time of print dimensions, fixtures, fittings, finishes and specifications are subject to change without notice. The properties are sold unfurnished.

