



# Richmond Villages Letcombe Regis

RICHMOND  
VILLAGES

*Part of Bupa*





# Welcome to Richmond Villages

We have over 25 years' experience of making people happy in their new homes. From opening our first Richmond Village in 1996, we have continued to provide the most prestigious communities for people to retire to.

So, if you're ready for downsizing (we call it rightsizing), Richmond Villages Letcombe Regis is a very special place where new beginnings start and quality memories are made.



# Move with confidence

As well as the 25 years of experience we have in owning and operating our villages, we offer you the assurance of being part of Bupa.

Bupa is a global healthcare provider without shareholders. This means we can reinvest all our business profits back into the services we offer, therefore improving the health and wellbeing of our residents.

We are also privileged to be founding members of the Associated Retirement Community Operators (ARCO) and we are proud to lead our retirement communities following the principles laid out in the ARCO consumer code.

Our care services are registered and inspected by the Care Quality Commission (CQC), the independent regulator of health and social care in England.







The Radcliffe Camera Building in Oxford

# Retire to Letcombe Regis

The charming village of Letcombe Regis (c1086) is nestled in the Oxfordshire countryside at the foot of the Berkshire Downs and is close to Lambourn, often referred to as 'The Valley of the Racehorse' and famous as the second largest centre of racehorse training in England.

Within a stone's throw from the village, you'll find a nature reserve, village pub, the beautiful Ridgeway and the picturesque market town of Wantage which enjoys a thriving atmosphere thanks to a good range of local amenities, including many shops, pubs and restaurants plus a twice weekly market.

Annual events for the town and surrounding area include a music festival, summer arts festival, literary festival and our very own vintage transport festival, which gets bigger every year! You can also visit historic Ashdown House, Blenheim Palace, and Buscot Park.

Situated just 2 miles from Wantage and only 20 miles from the beautiful University City of Oxford, Richmond Villages Letcombe Regis is easily accessible from the M4 motorway.

This really is one of the most charming places to live and retire to in the UK.



# Immerse yourself in the lifestyle & community

Rethink your retirement with Richmond Villages. Spend your days exactly as you please, in an immaculate environment with a wealth of fabulous facilities on your doorstep and a vibrant community surrounding you.

## LANDSCAPED GARDENS & NATURE RESERVE

The village is surrounded by beautiful gardens and even its very own nature reserve. The grounds can be enjoyed by taking a gentle stroll along its pathways, which are perfect for rambling and dog walking alike.

## BOWLING GREEN

Whether you are a keen player or a passive observer, the bowling green and games lawn provide both a practical and aesthetic focal point. Residents can enjoy a game or admire the view of the lush green area from the seated terrace.



*"Letcombe has everything we want in a retirement village. Thrilled to be here, just wish we'd done it years ago."*

Resident at Richmond Villages





#### **RESTAURANT & PIANO BAR**

Enjoy fine dining in our restaurant, serving delicious dishes seven days a week. For special occasions, private dining can be arranged.

#### **WELLNESS SPA**

The perfect place to relax and revitalise. Our top of the range Wellness Spa features a 16-metre heated pool, hot tub, sauna, steam room, nail bar, hair salon, therapy rooms offering a wide range of indulgent beauty treatments, and a fully equipped gym and studio with fitness classes to suit all abilities.

#### **THE LODGE SHOP & CAFÉ**

Whether you want to enjoy a coffee and croissant in the morning, or simply spend an hour relaxing with the daily paper, the Lodge Café and Shop is the ideal venue.

#### **ART & CRAFTS ROOM**

This creative space provides a wide range of materials, resources and equipment where you can discover or develop new arts and crafts, or even learn new computer skills.

#### **LIBRARY**

As well as offering residents a restful reading area, the library provides a quiet place to enjoy a game of chess, cards or Scrabble.

#### **TRANSPORT**

The Richmond Villages drivers offer regular scheduled trips into the town of Wantage for shopping as well as organised excursions to local places of interest.



*An aspirational lifestyle, where indulgent meals, exciting events and activities are part of the everyday*



# How it works

When it comes to retirement living, we know that it's not one-size-fits-all. That's why we offer a range of living options, completely tailored to suit you.

## INDEPENDENT LIVING APARTMENTS

Available to buy, our one- and two-bedroom bright and spacious luxury apartments offer a truly independent lifestyle with a supportive and sociable community on your doorstep.

## ASSISTED LIVING APARTMENTS

Available to buy or rent\*, our one- and two-bedroom Assisted Living Apartments are the ultimate worry-free option in retirement living. These apartments are complemented by a Lifestyle Package, which takes care of your daily tasks and chores, and frees up your time so you can enjoy your retirement to the full.

\*Available on select Assisted Living Apartments

## DOMICILIARY CARE

Our domiciliary care team can provide you with long- or short-term support with bespoke care packages in your apartment. We offer support tailored to your needs and can help you deal with sudden illness or injury, recovery from an operation or when a more permanent change in your health has occurred.

## CARE HOME

Nestled in the heart of the retirement village, our care home offers premium nursing and dementia care. Set within beautifully designed facilities, we pride ourselves on offering high specification, comfortable bedrooms, and an excellent standard of care.



*Independent Living Apartment*

TYPICAL LIVING ROOM



*Assisted Living Apartment*

TYPICAL BEDROOM



*Care Home*

TYPICAL BEDROOM





# Independent Living Apartments

*A premium lifestyle*

Our spacious one- and two-bedroom apartments offer the highest standard in retirement living. Bright and beautiful living spaces, modern kitchen areas and low maintenance gardens and terraces – we have everything you need to enjoy a worry-free and truly exceptional retirement. With a wealth of outstanding facilities on your doorstep, you can live life to the full every single day.

#### **LOW MAINTENANCE**

Leave the worries of a large property behind and move in to a modern, easy-to-maintain property that is ready for you to personalise as you wish.

#### **SAFE & SECURE**

As part of our retirement village, you can come and go as you wish, in the knowledge that your home and belongings are secure.

#### **FUTURE PROOF**

We offer care and support in your own home, should your circumstances change.

#### **SPACIOUS**

Our properties feature large storage cupboards, built-in kitchen appliances and wardrobes to help you maximise space in your new home.

#### **COMMUNAL SPACES**

Enjoy landscaped gardens and sunny terraces without having to lift a finger. Our dedicated gardeners have it all taken care of.



# Assisted Living Apartments

*Maintain your freedom*

Our Assisted Living Apartments welcome you into a world of relaxation, where daily chores and tasks become a thing of the past. Stunning one- and two- bedroom apartments, a wealth of state-of-the-art facilities on your doorstep, and an inclusive Lifestyle Package, designed to free up your time so you can enjoy the finer things in life. This really is the ultimate solution in worry-free retirement living.

## THE CHOICE IS YOURS

Assisted Living Apartments are complemented by a Lifestyle Package, which, for one easy monthly payment takes care of all your daily chores, utility bills and meals. Think premium dining where delicious dishes cooked by expert chefs are on offer every day of the week.

We offer two different Lifestyle Packages at Letcombe Regis: a comprehensive Lifestyle Package and a more flexible Lifestyle Flex Package. These packages offer different levels of service dependent on your needs and lifestyle.

## A LITTLE EXTRA SUPPORT

Prepare for the unexpected and live with peace of mind in our Assisted Living Apartments. We are privileged to have our own domiciliary care team at the village, providing you with tailored care and support in the comfort and safety of your own home, should you require it.



*"Richmond Villages was the perfect choice, as Mum could be near her family while maintaining her independence."*

Daughter of a Resident at Richmond Villages





# Care Home

*Where comfort meets  
complete security*

Nestled in the heart of Richmond Villages Letcombe Regis, our care home offers an exceptional standard of dementia and nursing care. Professionally designed interiors exude warmth and comfort. Our high specification private bedrooms are all complete with their own en-suite and invite a sense of home.

## **NURSING CARE**

Our nursing care home offers a highly personalised approach with round-the-clock care. Our friendly and familiar nurses are able to provide highly specialised care in the comfort of your own private bedroom, promoting a sense of calm and security for our residents.

## **RESPITE CARE**

Rest and recovery when you need it most, perhaps after an operation or following an illness, our safe and skilled

environment is the ideal place to rehabilitate before returning to your own home.

## **DEMENTIA CARE**

Our specialised dementia care home provides a safe and secure environment with easy-to-navigate spaces and fulfilling activities, enabling those with dementia to live well. As part of Bupa, we work closely with leading dementia specialists, ensuring that we remain at the forefront of the very best in dementia care.



# Experience the lifestyle

Making a big change in life is a decision that requires careful thought and planning; that's why we offer Try Before You Buy in our Assisted Living Apartments. Take just a few days or up to a couple of weeks to immerse yourself in the lifestyle and let us help you understand a little more about the advantages and benefits that a retirement village can offer.

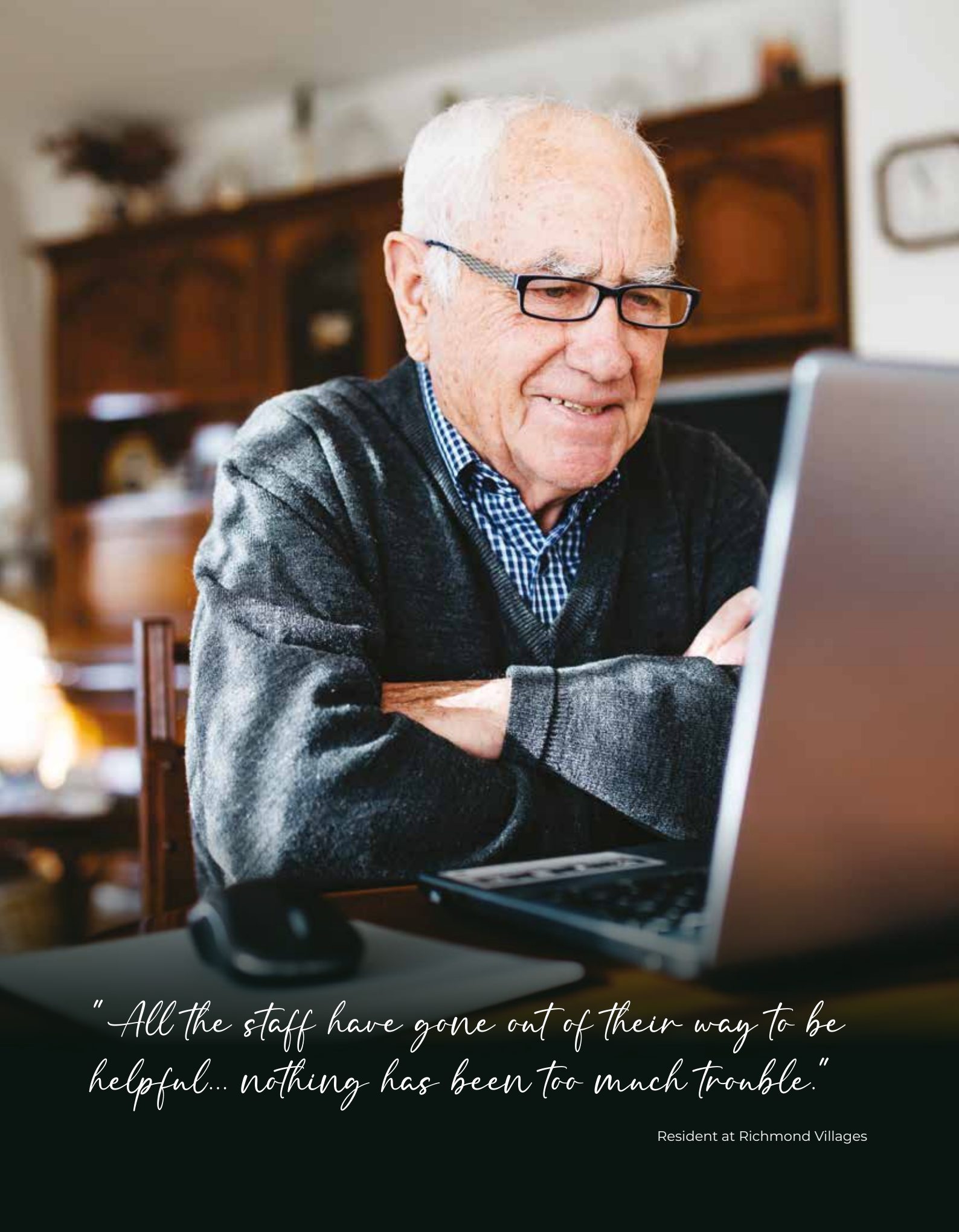
## *Why try before you buy?*

- Immerse yourself in the lifestyle - enjoy delicious meals in the restaurant, spend your days relaxing in the tranquil Wellness Spa or taking part in the daily activities. This is the perfect opportunity to try on your new lifestyle for size.
- Stay in one of our designated Assisted Living Apartments and see how the accommodation suits you.
- Get the support you need in the comfort of your own home.
- Experience living within a vibrant retirement community.

A photograph of a man and a woman sitting at a bar. The man is on the left, wearing a dark suit, and the woman is on the right, wearing a red dress and a pearl necklace. They are both smiling and clinking their champagne glasses. The bar has a white countertop and a backshelf with various bottles. The background is a warm, indoor setting with framed pictures on the wall.

*"The lakes, location, and community is what sold us on this retirement village, it lives up to all our expectations."*





*"All the staff have gone out of their way to be helpful... nothing has been too much trouble."*

Resident at Richmond Villages

# Property to sell? We're here to help

*You're in safe hands*

With over 25 years' experience in helping people move home, you can feel assured that we will guide you every step of the way.

## **HOME BUYING SERVICE**

We know that moving home can be a challenging time, and our goal is to make the process as simple and stress-free as possible. That's where the home buying service comes in, a dependable solution for selling your existing property quickly and easily. With the home buying service, moving into your dream home at Richmond Villages has never been easier.

## **SENIOR MOVE PARTNERSHIP**

We work closely with the Senior Move Partnership, a company specialising in supporting older people throughout the moving process. Together, we can take the worry out of your move.

## **VILLAGE ADVISERS**

Our personable and professional village advisers are on-hand to guide you every step of the way, from your initial point of enquiry through to moving day and beyond.



# Your local community awaits

## DOCTORS, DENTISTS & OPTICIANS

1. Newbury Street Practice 2.7 miles
2. Portway Dental Care 1.8 miles
3. Wantage Community Hospital 2.2 miles
4. Boots Opticians 2.7 miles

## BANK

5. TSB Bank & Nationwide Building Society 2.2 miles

## POPULAR RETAILERS

6. Waitrose 2 miles
7. Sainsbury's 2.7 miles
8. Wantage Farmers & Artisan Markets 2.1 miles

## HAIR & BEAUTY

9. Wellness Spa 0 miles

## PUBS & RESTAURANTS

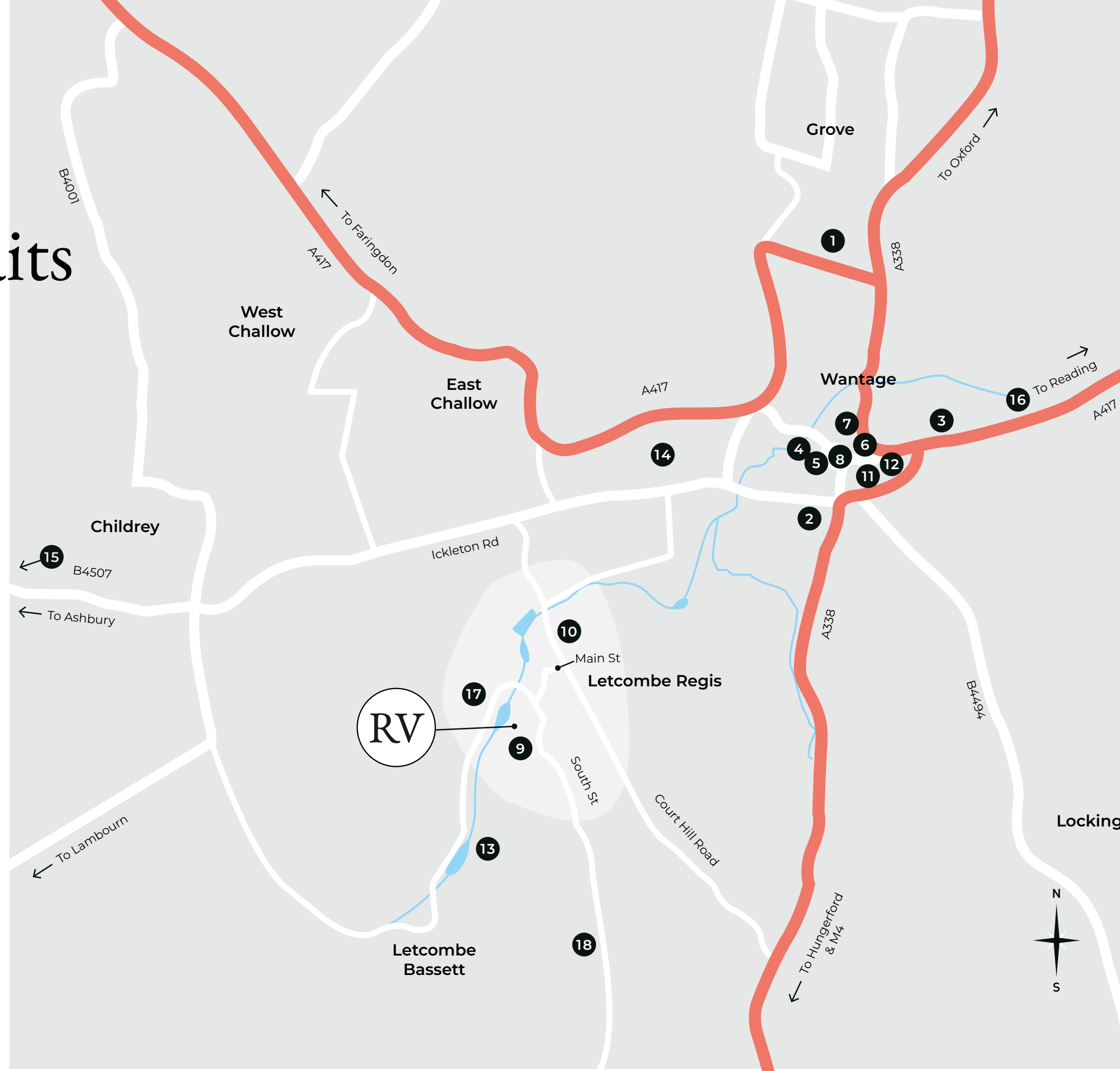
10. The Greyhound Inn 0.2 miles
11. Wildwood 2 miles
12. The Bay Tree Café 1.9 miles

## PARKS & GARDENS

13. Letcombe Valley & Nature Reserve 0.6 miles
14. Jubilee Gardens 1.9 miles
15. Uffington Castle 7.7 miles

## SPORTS & SOCIETIES

16. Wantage & Grove Cricket Club 2.7 miles
17. Letcombe Regis Tennis Club 0.3 miles
18. Letcombe Allotments 0.7 miles







# Take the next step

## **CONTACT A VILLAGE ADVISER**

Our friendly and experienced advisers love meeting new people. Passionate about what we can offer and how good retired life can be, these are the best people to talk to when you are considering a move to one of our villages.

## **BOOK A SHOWROUND**

We'd love to welcome you to Richmond Villages Letcombe Regis in person. There's a lot to show you, so by booking a private appointment, we can arrange a tour of the village facilities and available properties plus have time for a lovely cup of tea and slice of cake!

## **BROWSE OUR PROPERTIES**

All our properties currently available are listed on our website and Rightmove.

## **TRY BEFORE YOU BUY**

If you really want to see if Richmond Villages is for you, we have dedicated properties which you can book in advance. Come and experience the lifestyle for a few days or a couple of weeks. Your stay includes a full board package and use of the on-site facilities.

Tel: 01235 773 970 Email: [letcomberegis@richmond-villages.com](mailto:letcomberegis@richmond-villages.com)

Richmond Villages Letcombe Regis, South Street,  
Letcombe Regis, Oxfordshire OX12 9RG



# Frequently Asked Questions

## **WHAT IS AN INDEPENDENT LIVING APARTMENT?**

These one- and two- bedroom properties have everything you need to live an independent lifestyle, with the added benefit of being within the retirement village. You can enjoy all the facilities, outdoor spaces, activities and events, and be part of a vibrant community.

## **WHAT IS AN ASSISTED LIVING APARTMENT?**

Offering the ultimate solution to worry-free retirement living, our Assisted Living Apartments are the perfect option for those that wish to maintain their independence without the hassle of everyday chores. Complemented by an inclusive Lifestyle Package which, for one easy monthly payment, takes care of your housekeeping, utility bills, laundry and meals, so you can spend more time doing the things you love.

## **DO YOU HAVE CARE HOMES?**

Yes, we have a village care home at each of our locations. Our care homes are bright and beautifully presented and residents benefit from a private en-suite bedroom with a modern profiling bed and enough space for furniture and meaningful possessions.

## **WHAT IF I BUY A PROPERTY AND MY HEALTH CHANGES?**

We have a dedicated in-home care team who can provide as much care and support as you need. This can be offered on a short- or long-term basis to recover from an operation, illness or more significant changes in your overall health.

## **CAN WE MOVE IN AS A COUPLE?**

Absolutely. One of our main aims in creating Richmond Villages is to keep loved ones together in a community. We provide personal support for many different health needs without you having to move multiple times or live apart. The range of services and facilities under one roof are what make Richmond Villages unique.

## **CAN I BRING MY PET?**

Pets are part of the family, and it wouldn't be home without them. Our villages are very pet-friendly, and we have lots of outdoor spaces for you to walk them. If you have any specific queries, make an enquiry and speak to your appointed Village Adviser, who will be happy to help.

## **WHAT ARE THE BENEFITS OF BEING PART OF BUPA?**

Richmond Villages has been owned by Bupa since 2013. Bupa is a respected and trusted global private healthcare organisation founded in 1947. Not for profit and without shareholders, it means their customers are the absolute focus. It also means we can provide a stable environment which benefits not only our employees but our residents who choose to make a Richmond Village their home.

## **WHO IS YOUR SECTOR BODY?**

Richmond Villages are founding members of the Associated Retirement Community Operators (ARCO). As approved operators, we aim to operate all of our retirement communities according to the principles laid down in the ARCO Consumer Code. The Code sets high standards for operators and provides a benchmark for good practice.



*"Sometimes I find it  
hard to believe that I  
call such a wonderful  
place home"*

Audrey, Resident at Richmond Villages

R I C H M O N D  
V I L L A G E S

*Part of Bupa*

[www.richmond-villages.com/letcombe](http://www.richmond-villages.com/letcombe) | 

Richmond Villages Operations Limited, Company No: 4779288.  
Registered Office: 1 Angel Court, London, EC2R 7HJ, United Kingdom. Registered in England and Wales.

February 2023