

# 42 Village Centre – £270,000

(Other charges apply)

RICHMOND  
VILLAGES

Part of Bupa

SF

2



2



EPC - C



Typical kitchen



Typical living room



Typical bedroom



Typical shower room



## 2 bedroom assisted living apartment

An attractive second floor two-bedroom apartment covering over 762 sqft. The accommodation comprises an entrance hall with storage cupboard, living room, modern kitchenette and two double bedrooms with en-suite shower rooms. Under-floor heating throughout with carpets, flooring and curtains included. The apartment is situated within the main village centre building close to all facilities.

### Specification

- Spacious living room with large window. Modern remote controlled electric fire and surround.
- Modern fitted kitchenette with range of wall and base units, integrated Neff fridge and undercupboard lighting.
- Spacious master bedroom with large window.
- En-suite shower room with walk-in shower and fully fitted white suite.
- Second double bedroom with window.
- Second en-suite shower room with walk-in shower and fully fitted white suite.
- Entrance hall with large storage cupboard.
- TV and satellite points\*.
- Well stocked flower borders and lawns maintained by the Village Gardeners.
- Allocated parking space for one car.

\*Satellite subscription not included.

Important Notice: These particulars are intended to give a fair and substantially correct overall description. **Other fees and charges apply**, please contact the Village Advisers for further details. Properties are sold on a 125 year lease and this property has 125 years remaining.

01332 794300

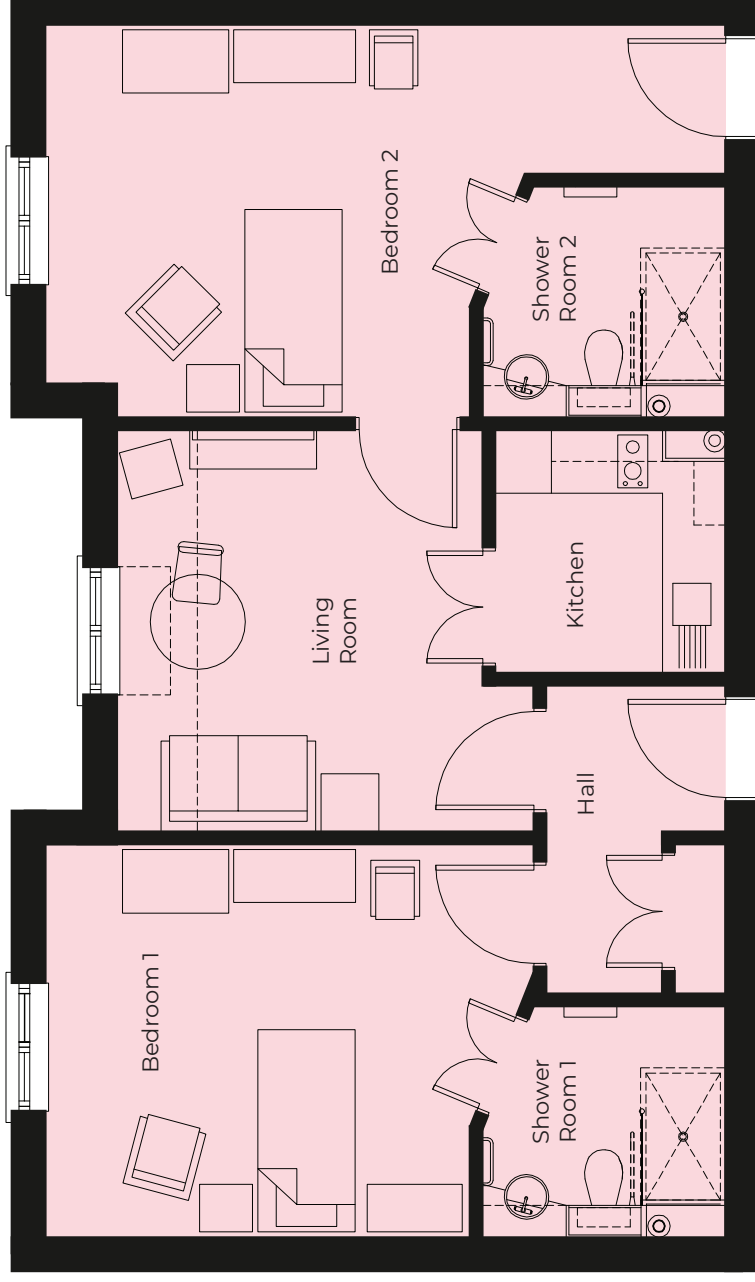
astonontrent@richmond-villages.com

Richmond Villages Aston-on-Trent,  
Richmond Drive, Aston-on-Trent, Derbyshire DE72 2EA

# 42 Village Centre

Second Floor | 70.84m<sup>2</sup> – 762.51ft<sup>2</sup>

<b>Kitchen</b>	2300mm x 2180mm 7'7" x 7'2"
<b>Living Room</b>	3935mm x 3800mm 12'11" x 12'6"
<b>Bedroom 1</b>	6425mm x 3710mm 21'1" x 12'2"
<b>Shower Room 1</b>	2300mm x 2180mm 7'7" x 7'2"
<b>Bedroom 2</b>	4610mm x 3710mm 25'2" x 12'2"
<b>Shower Room 2</b>	2300mm x 2180mm 7'7" x 7'2"



These particulars are intended to give a fair and substantially correct overall description.

Measurements have been taken at 1500mm skirting height.

All dimensions are approximate. Bedroom measurements include the wardrobe if applicable. Room measurements include bay windows if applicable.

Furniture layout is to give an indicative impression. Although all efforts have been made to ensure its accuracy at time of print dimensions, fixtures, fittings, finishes and specifications are subject to change without notice.

The properties are sold unfurnished.

