

42 Village Centre, £270,000

(Other charges apply)

RICHMOND
VILLAGES

Part of Bupa

SF

2



2



EPC - C



1 bedroom assisted living apartment

An attractive second floor one-bedroom apartment covering over 762 sqft. The accommodation comprises an entrance hall with storage cupboard, living room, dining room, modern kitchenette and a double bedroom with en-suite shower room. Under-floor heating throughout with carpets, flooring and curtains included. The apartment is situated within the main village centre building close to all facilities.

Specification

- Spacious and bright dining room with south- and west-facing windows overlooking the surrounding gardens and park land. Modern remote controlled electric fire with feature surround.
- Modern fitted kitchen with granite worktops, under cupboard lighting and built-in Neff appliances including electric oven and hob, fridge/freezer and dishwasher.
- Large main bedroom with fitted wardrobes.
- En-suite shower room with walk-in shower and fully fitted white suite.
- Living room with south-facing window
- Guest shower room with walk-in shower and fully fitted white suite.
- Entrance hall with large storage cupboard and utility cupboard with Bosch washing machine and Bosch tumble dryer.
- Central heating radiators in all rooms. TV and satellite points*.
- Well stocked flower borders and lawns maintained by the Village Gardeners.
- Allocated parking space for one car.



*Satellite subscription not included.

Important Notice: These particulars are intended to give a fair and substantially correct overall description. Other fees and charges apply, please contact the Village Advisers for further details. Properties are sold on a 125 year lease and this property has 118 years remaining.

01332 794300

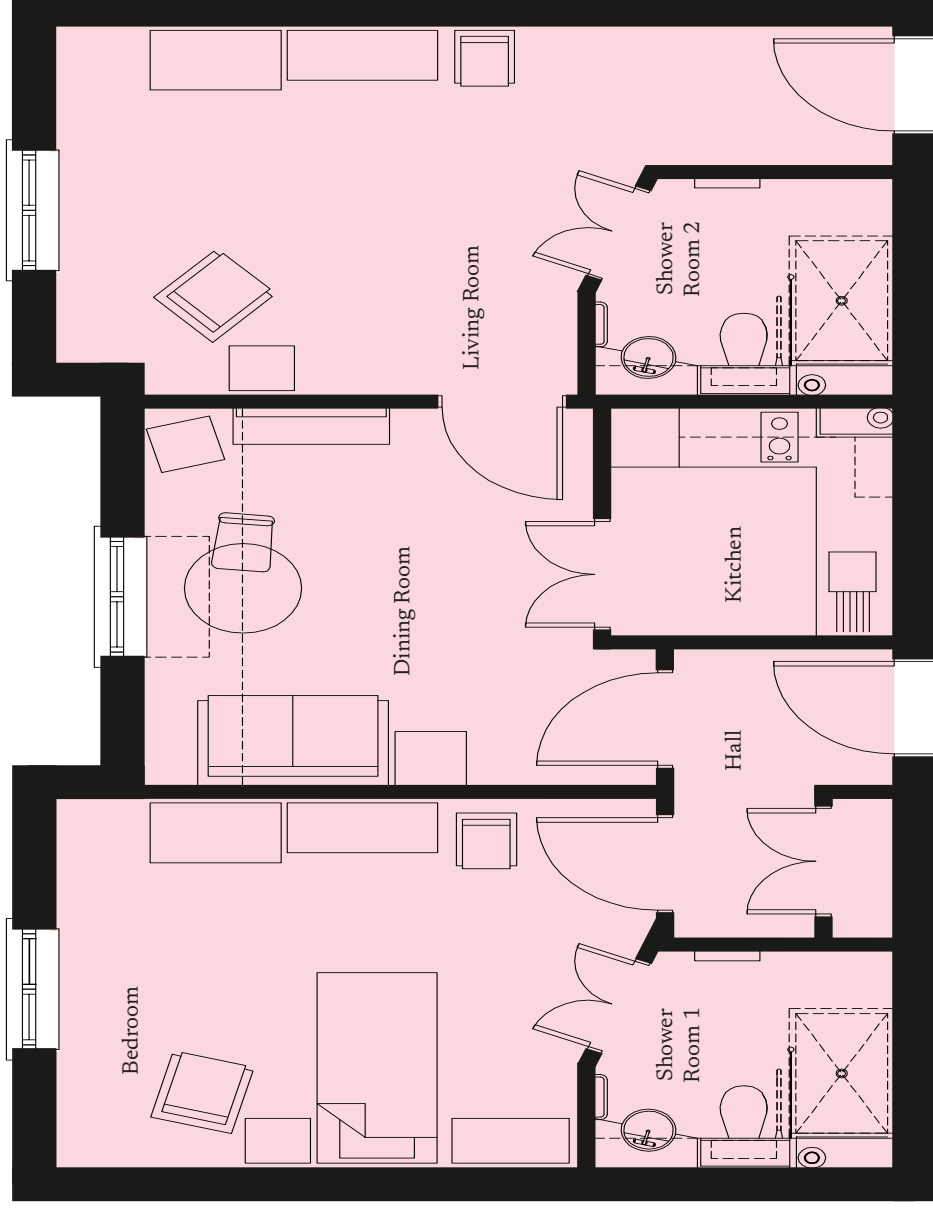
astonontrent@richmond-villages.com

Richmond Villages Aston-on-Trent,
Richmond Drive, Aston-on-Trent, Derbyshire DE72 2EA

42 Village Centre

Second Floor | 70.84m – 762.51ft²

Kitchen	2300mm x 2180mm 7'7" x 7'2"
Dining Room	3935mm x 3800mm 12'11" x 12'6"
Bedroom 1	6425mm x 3710mm 21'1" x 12'2"
Shower Room 1	2300mm x 2180mm 7'7" x 7'2"
Living Room	4610mm x 3710mm 25'2" x 12'2"
Shower Room 2	2300mm x 2180mm 7'7" x 7'2"



These particulars are intended to give a fair and substantially correct overall description. Measurements have been taken at 1500mm ceiling height. All dimensions are approximate. Bedroom measurements include the wardrobe if applicable. Room measurements include bay windows if applicable. Furniture layout is to give an indicative impression. Although all efforts have been made to ensure its accuracy at time of print dimensions, fixtures, fittings, finishes and specifications are subject to change without notice. The properties are sold unfurnished.

