

Suite 37, £230,000

(Other charges apply)

RICHMOND
VILLAGES

Part of Bupa

SF

1



1



EPC - C



1 bedroom second floor apartment

37 Village Centre is an attractive second-floor, one-bedroom village suite. The property is 623 sqft and features an entrance hall with storage cupboard, living room, fully fitted modern kitchen and main bedroom with en-suite shower room. This apartment also has under-floor heating throughout with carpets, flooring and curtains included.

Specification

- Living room with double-glazed window. Remote-controlled electric fire with feature hearth and surround, TV, satellite and external and internal telephone points.
- Fitted kitchenette with a under counter fridge and counter top. The kitchenette also has a range of wall and base units with under cupboard lighting.
- A spacious bedroom with double glazed south facing window
- En-suite shower room with walk-in shower and fully fitted white suite.
- Entrance hall with double-door storage cupboard and doors leading off to the living room and bedroom.
- TV and satellite points*.
- Well stocked flower borders and lawns maintained by the Village Gardeners.
- Allocated parking space for one car.



*Satellite subscription not included.

Important Notice: These particulars are intended to give a fair and substantially correct overall description. **Other fees and charges apply**, please contact the Village Advisers for further details. Properties are sold on a 125 year lease and this property has 125 years remaining.

01332 794300

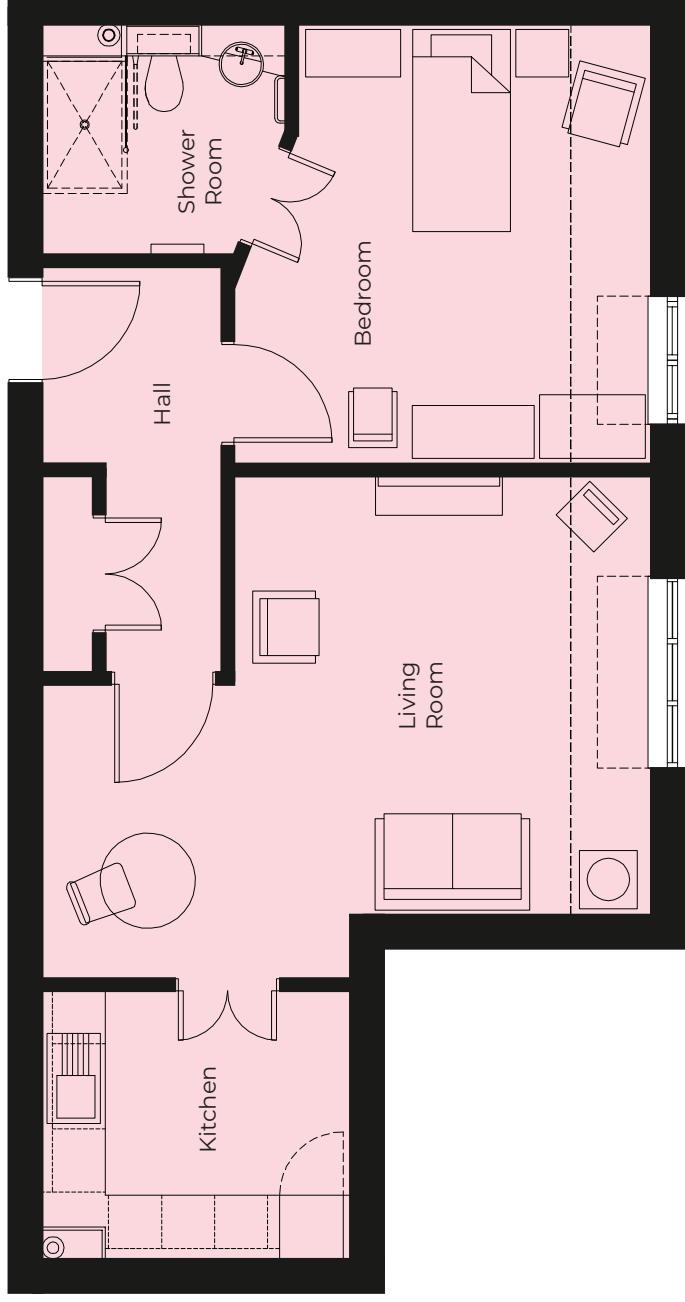
astonontrent@richmond-villages.com

Richmond Villages Aston-on-Trent,
Richmond Drive, Aston-on-Trent, Derbyshire DE72 2EA

37 Village Centre

Second Floor | 57.84m² – 622.58ft²

- Kitchen**
2915mm x 2530mm
9'7" x 8'4"
- Living Room**
5750mm x 4750mm
18'10" x 15'7"
- Bedroom**
4150mm x 3935mm
13'7" x 12'11"
- Shower Room**
2300mm x 2180mm
7'7" x 7'2"



These particulars are intended to give a fair and substantially correct overall description. Measurements have been taken at 1500mm skimming height. All dimensions are approximate. Bedroom measurements include the wardrobe if applicable. Room measurements include bay windows if applicable. Furniture layout is to give an indicative impression. Although all efforts have been made to ensure its accuracy at time of print dimensions, fixtures, fittings, finishes and specifications are subject to change without notice. The properties are sold unfurnished.

