

Apartment 49, £629,995*

(Other charges apply)

RICHMOND
VILLAGES

Part of Bupa



2



2



EPC - C

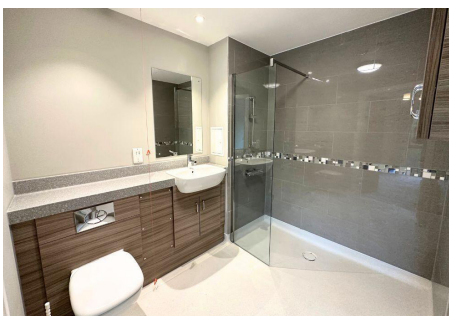


2 bedroom third floor apartment

A spacious first-floor two-bedroom apartment at 975 sqft. The apartment is situated close to the main village centre and village facilities. A brand-newly refurbished home, ready for occupation. This apartment has been converted into an independent living space in September 2023.

Specification

- A bright and large living room is South facing and overlooks the lovely landscaped gardens at the front of the village. Feature fireplace.
- Modern Nobilia fitted kitchen with range of wall and base units and integrated appliances including Neff fridge/freezer, washer/dryer, dishwasher and oven and hob.
- Main bedroom with modern shower room.
- Second bedroom with modern shower room.
- En-suite shower room with large shower area and screen.
- TV and satellite points*.
- Well stocked flower borders and lawns maintained by the Village Gardeners.
- Allocated parking space for one car.



*Satellite subscription not included.

Important Notice: These particulars are intended to give a fair and substantially correct overall description. **Other fees and charges apply**, please contact the Village Advisers for further details. Properties are sold on a 125 year lease and this property has 122 years remaining.

01242 802772

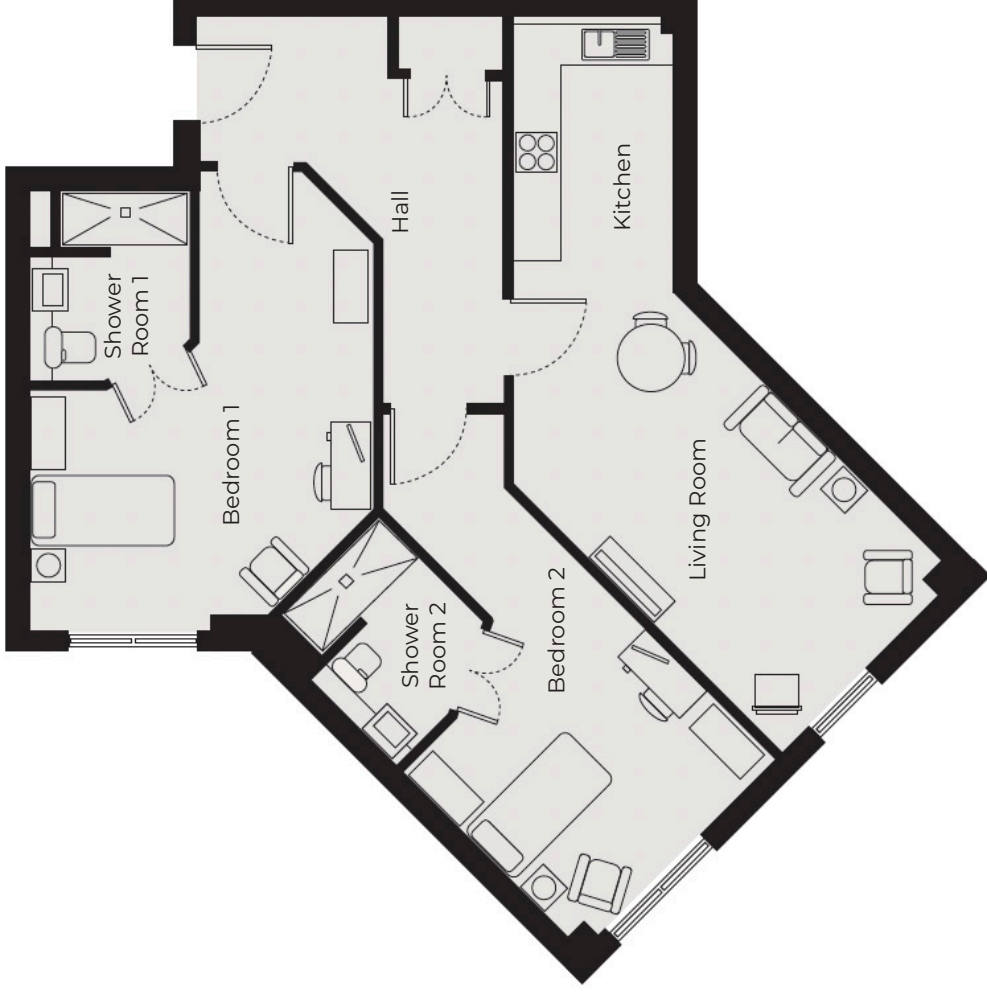
cheltenham@richmond-villages.com

Richmond Villages Cheltenham,
Hatherley Lane, Cheltenham, Gloucestershire, GL51 6PN

Apartment 49

Third Floor | 975ft²

- Kitchen**
3319mm x 2122mm
10'9" x 6'7"
- Living Room**
6660mm x 3350mm
21'10" x 10'11"
- Bedroom 1**
5990mm x 4610mm
19'8" x 15'1"
- Bedroom 2**
3900mm x 3640mm
12'9" x 11'11"
- Shower Room 1**
2500mm x 2120mm
8'2" x 6'11"
- Shower Room 2**
2300mm x 2120mm
8'2" x 6'11"



These particulars are intended to give a fair and substantially correct overall description. Measurements have been taken at 1500mm skimming height. All dimensions are approximate. Bedroom measurements include the wardrobe if applicable. Room measurements include bay windows if applicable. Furniture layout is to give an indicative impression. Although all efforts have been made to ensure its accuracy at time of print dimensions, fixtures, fittings, finishes and specifications are subject to change without notice. The properties are sold unfurnished.

