

Penthouse 51, £430,000*

(Other charges apply)

**RICHMOND
VILLAGES**

Part of Bupa

3F

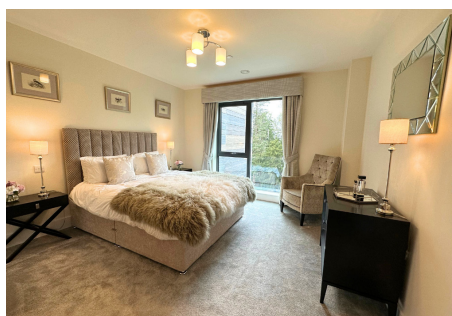
2



2



EPC - B



2 bedroom third floor apartment

We are delighted to offer this newly refurbished two-bedroom apartment which has been converted into a fully independent living space in September 2023. The property is perfectly situated within easy access of our outstanding on-site facilities including the restaurant, bar, reception, library, luxury urban dry spa, beautifully manicured gardens and café.

Specification

- Stylish two bedroom, third floor apartment
- Independent Living
- The tastefully designed living / dining room is west facing and has views out over our landscaped gardens surrounded by established woodland.
- Spacious main bedroom with en-suite wet room
- The second bedroom is also generously sized and is complemented by its own en-suite shower room.
- Outstanding on-site facilities including Luxury Urban Dry Spa
- Centred around community & wellbeing
- Beautifully manicured grounds
- Allocated parking space for one car
- Just 10 minutes from Cheltenham town centre



*Satellite subscription not included.

Important Notice: These particulars are intended to give a fair and substantially correct overall description. **Other fees and charges apply**, please contact the Village Advisers for further details. Properties are sold on a 125 year lease and this property has 122 years remaining.

01242 474 333

cheltenham@richmond-villages.com

**Richmond Villages Cheltenham,
Hatherley Lane, Cheltenham, Gloucestershire GL51 6PN**

Penthouse 51

Third Floor | 65.84m² – 709ft²

Kitchen

2180mm x 2120mm

72" x 6'9"

Living Room

5430mm x 3610mm

17'10" x 11'10"

Bedroom 1

4200mm x 3670mm

12'8" x 12'

Shower Room 1

2500mm x 2120mm

8'2" x 6'11"

Bedroom 2

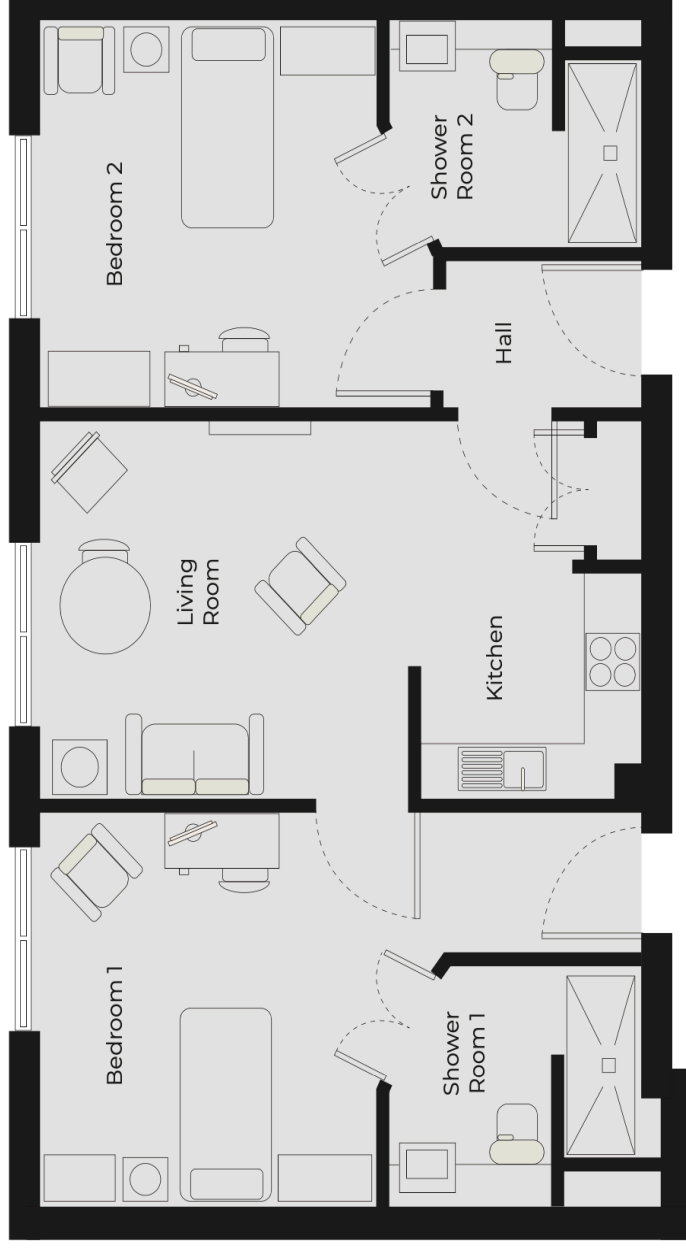
3960mm x 3610mm

13' x 11'10"

Shower Room 2

2500mm x 2120mm

8'2" x 6'11"



These particulars are intended to give a fair and substantially correct overall description.

Measurements have been taken at 1500mm skimming height.

All dimensions are approximate. Bedroom measurements include the wardrobe if applicable. Room measurements include bay windows if applicable.

Furniture layout is to give an indicative impression. Although all efforts have been made to ensure its accuracy at time of print dimensions, fixtures, fittings, finishes and specifications are subject to change without notice.

The properties are sold unfurnished.