

Apartment 48, £430,000*

(Other charges apply)

RICHMOND
VILLAGES

Part of Bupa



2



2



EPC - C

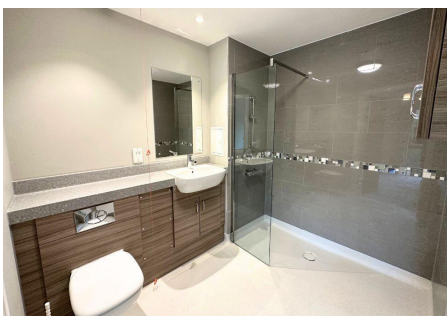


2 bedroom third floor apartment

Richmond Villages Cheltenham are pleased to offer this spacious two bedroom independent living apartment, with large windows overlooking the communal gardens. The apartment offers direct lift access to communal facilities including reception, the restaurant, bar and coffee area, library, wellness spa and numerous terraces.

Specification

- Spacious open-plan living/dining room with remote controlled electric fire.
- Modern fitted kitchen with oven, hob, plus built-in appliances including a fridge freezer and washer dryer.
- Two bedrooms
- En-suite shower room with large shower area and glazed screen. White suite comprising low level WC and wash basin set within a fully fitted vanity unit, featuring a fitted wall mirror.
- Double glazing and central heating radiators in all rooms.
- Council band: E
- Well stocked flower borders and lawns maintained by the Village Gardeners.
- Allocated parking space for one car.



Important Notice: These particulars are intended to give a fair and substantially correct overall description. **Other fees and charges apply**, please contact the Village Advisers for further details. Properties are sold on a 125 year lease and this property has 122 years remaining. CGI imagery is used for guidance and illustrative purposes only and does not represent the specific apartment for sale.

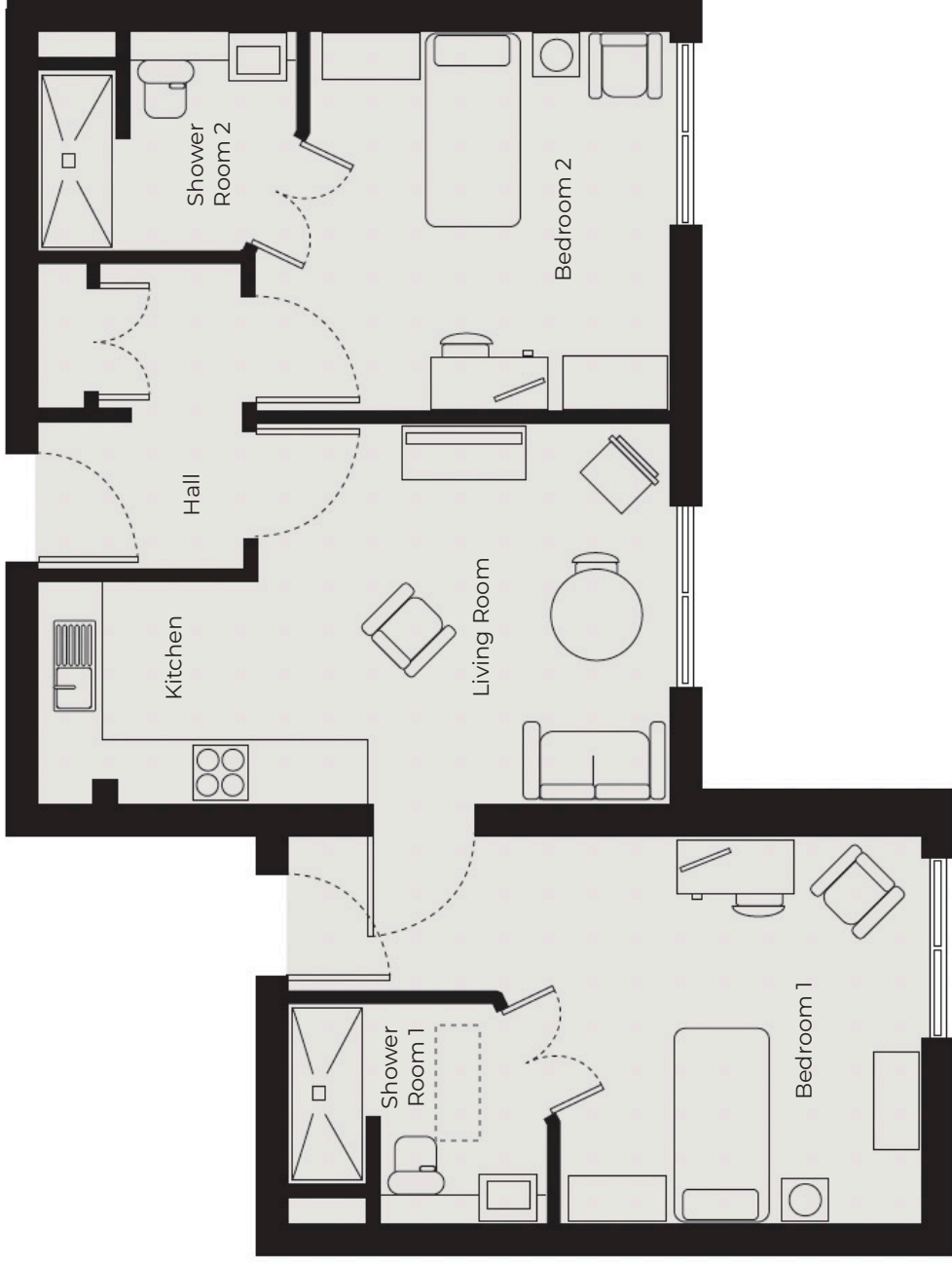
01242 474 333

cheltenham@richmond-villages.com

Richmond Villages Cheltenham,
Hatherley Lane, Cheltenham, Gloucestershire, GL51 6PN

Apartment 48

Third Floor | 716ft²



- Kitchen**
3150mm x 2110mm
10'3" x 6'9"
- Living Room**
3940mm x 3610mm
12'11" x 11'10"
- Bedroom 1**
4100mm x 3640mm
13'6" x 11'11"
- Bedroom 2**
3940mm x 3620mm
12'11" x 6'11"
- Shower Room 1**
2500mm x 2120mm
8'2" x 6'9"
- Shower Room 2**
2500mm x 2120mm
8'2" x 6'11"

These particulars are intended to give a fair and substantially correct overall description.

Measurements have been taken at 1500mm skimming height.

All dimensions are approximate. Bedroom measurements include the wardrobe if applicable. Room measurements include bay windows if applicable.

Furniture layout is to give an indicative impression. Although all efforts have been made to ensure its accuracy at time of print dimensions, fixtures, fittings, finishes and specifications are subject to change without notice.

The properties are sold unfurnished.

