

Apartment 4, £480,000

(Other charges apply)

RICHMOND
VILLAGES

Part of Bupa



EPC - C

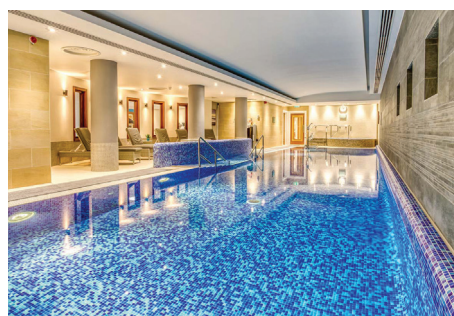


1 bedroom independent living apartment

We are pleased to offer this lovely one bedroom apartment, situated at courtyard level, featuring a large living room with a south-west facing balcony, providing beautiful views of the lower garden and Painswick Valley. The front entrance is from the courtyard.

Specification

- A bright living room with French doors leading to a private south-west facing balcony with views across Painswick Valley. Feature fireplace.
- Modern fitted kitchen with range of wall and base units and integrated Neff appliances including fridge/freezer, washer/dryer and oven and hob.
- Dual aspect master bedroom with built in wardrobes.
- Shower room with walk-in shower and fully fitted suite.
- Cloakroom with WC and wash hand basin.
- Entrance hall.
- TV and satellite points*.
- Well stocked flower borders and lawns maintained by the Village Gardeners.
- Allocated parking space for one car.



*Satellite subscription not included.

Important Notice: These particulars are intended to give a fair and substantially correct overall description. Other fees and charges apply, please contact the Village Advisers for further details. Properties are sold on a 125 year lease and this property has 110 years remaining.

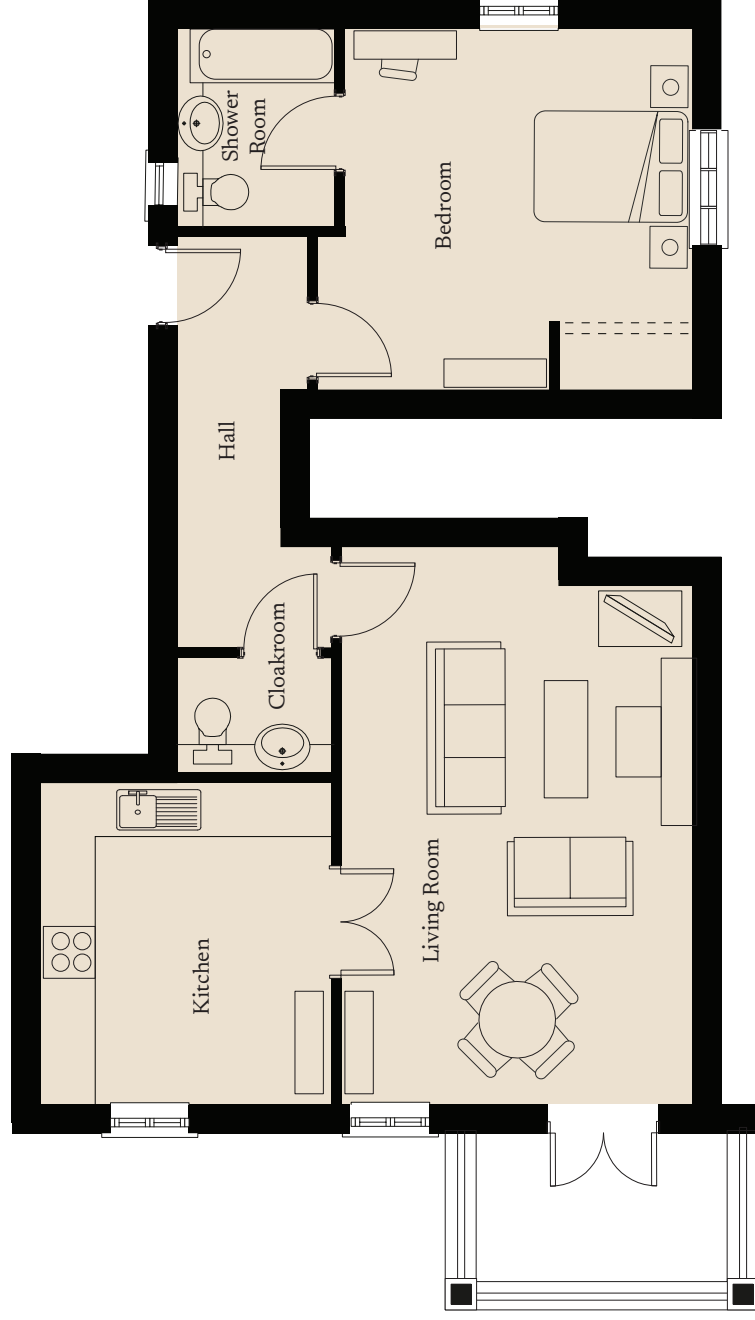
01452 810 203

painswick@richmond-villages.com

Richmond Villages Painswick,
Stroud Road, Painswick, Gloucestershire GL6 6UL

Apartment 4

Courtyard Level



Kitchen
3718mm x 3352mm 12'2" x 11'
Living Room
6065mm x 4084mm 19'11" x 13'4"
Bedroom
4236mm x 4084mm 13'11" x 13'4"
Shower Room
2407mm x 1828mm 7'10" x 6'
Cloakroom
1859mm x 1402mm 6'1" x 4'6"

These particulars are intended to give a fair and substantially correct overall description.

Measurements have been taken at 1500mm skirting height.

All dimensions are approximate. Bedroom measurements include the wardrobe if applicable. Room measurements include bay windows if applicable.

Furniture layout is to give an indicative impression. Although all efforts have been made to ensure its accuracy at time of print dimensions, fixtures, fittings, finishes and specifications are subject to change without notice.

The properties are sold unfurnished.

