

21 Village Centre, £295,000

(Other charges apply)

RICHMOND
VILLAGES

Part of Bupa

FF

2



2



EPC - C



2 bedroom first floor apartment

A spacious first-floor two-bedroom apartment for resale at 791 sqft. The apartment is situated close to the main village centre and village facilities.

Specification

- The generously sized lounge/dining room has a large double glazed West facing bay window overlooking the beautiful meadow. Feature fireplace.
- Double doors with glazing lead from the living room to the contemporary kitchenette with a range of wall and base units and under cupboard lighting. Integrated Neff fridge.
- Spacious main bedroom with West-facing aspect and Kindred fitted wardrobes.
- Second bedroom with West facing window and Kindred fitted wardrobes.
- En-suite shower room with large shower area and screen in both rooms.
- TV and satellite points*.
- Well stocked flower borders and lawns maintained by the Village Gardeners.
- Allocated parking space for one car.



*Satellite subscription not included.

Important Notice: These particulars are intended to give a fair and substantially correct overall description. Other fees and charges apply, please contact the Village Advisers for further details. Properties are sold on a 125 year lease and this property has 119 years remaining.

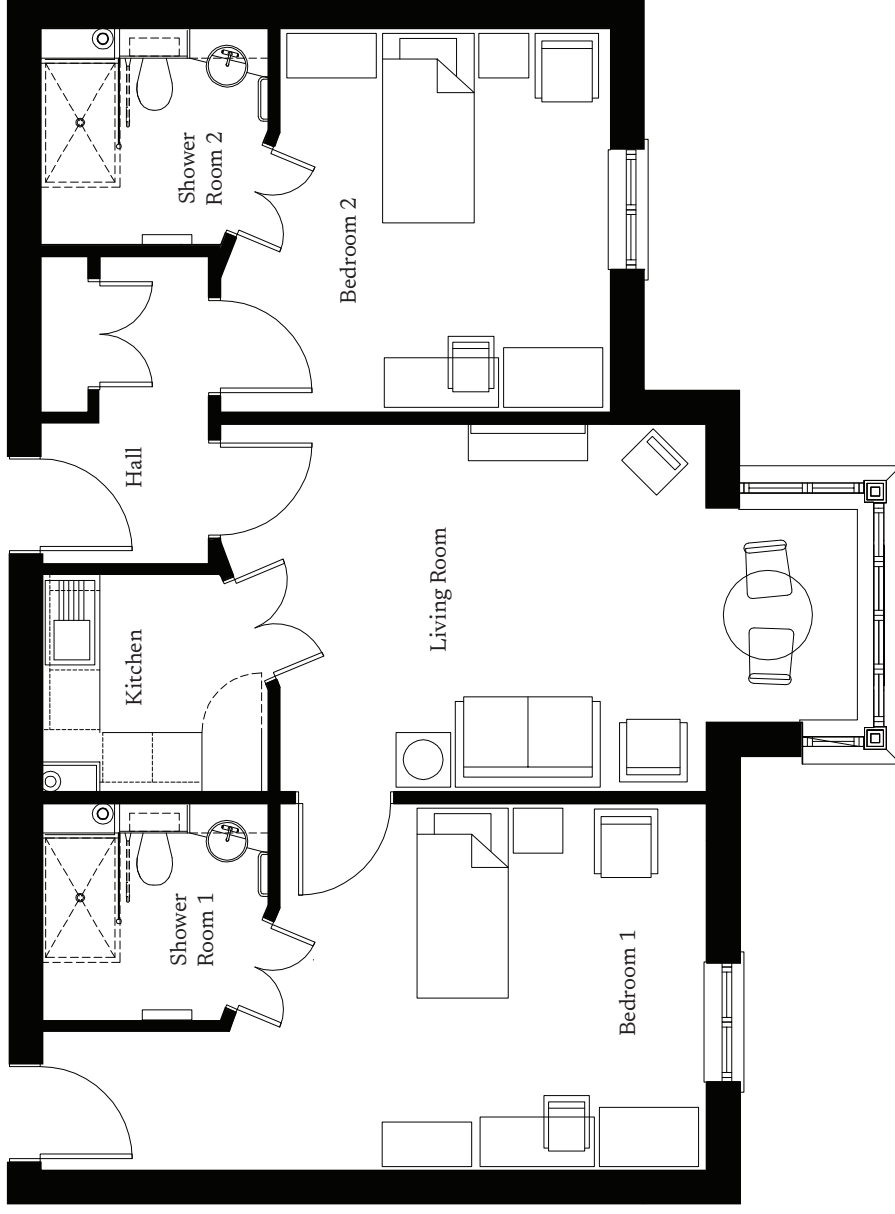
01332 794 300

astonontrent@richmond-villages.com

Richmond Villages Aston-on-Trent,
Richmond Drive, Aston-on-Trent, Derbyshire, DE72 2EA

21 Village Centre

First Floor



Kitchen	2300mm x 2180mm
7'7" x 7'2"	
Living Room	4420mm x 3800mm
14'6" x 12'6"	
Bedroom 1	4300mm x 3710mm
14'1" x 12'2"	
Bedroom 2	3710mm x 3335mm
12'2" x 10'11"	
Shower room 1	2300mm x 2180mm
7'7" x 7'2"	
Shower room 2	2300mm x 2180mm
7'7" x 7'2"	

These particulars are intended to give a fair and substantially correct overall description. Measurements have been taken at 1500mm ceiling height.

All dimensions are approximate. Bedroom measurements include the wardrobe if applicable. Room measurements include bay windows if applicable.

Furniture layout is to give an indicative impression. Although all efforts have been made to ensure its accuracy at time of print dimensions, fixtures, fittings, finishes and specifications are subject to change without notice.

The properties are sold unfurnished.

