

Apartment 14, £262,995

RICHMOND
VILLAGES

Part of Bupa



1



1



EPC - C



1 bedroom assisted living apartment

Richmond Villages are pleased to offer for resale this one bedroom, first floor assisted living apartment with spacious accommodation in excellent condition. The apartment features a private balcony with views of the woodland.

Specification

- Spacious living/dining room with double glazed window and balcony with woodland views. Remote controlled electric fire with feature fire surround.
- Modern fitted kitchen with under cupboard lighting and integrated fridge freezer and microwave.
- Master bedroom with floor to ceiling window.
- En-suite shower room with walk-in shower and fitted white suite.
- Entrance hall with storage cupboard.
- Double glazing and central heating in all rooms.
- TV and satellite points*
- Well stocked flower borders and lawns maintained by the Village Gardeners.
- Allocated parking space for one car.



*Satellite subscription not included.

Important Notice: These particulars are intended to give a fair and substantially correct overall description. **Other fees and charges apply**, please contact the Village Advisers for further details. Properties are sold on a 125 year lease and this property has 122 years remaining.

01242 474 333

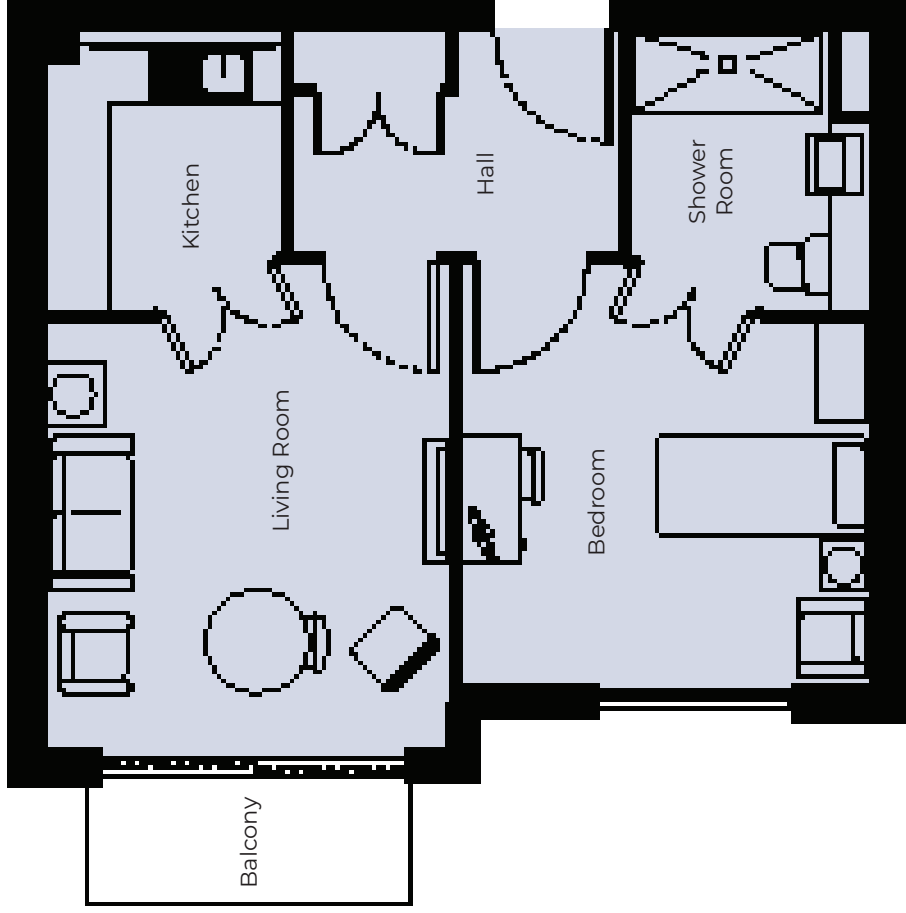
cheltenham@richmond-villages.com

Richmond Villages Cheltenham,
Hatherley Lane, Cheltenham, Gloucestershire GL51 6PN

Apartment 14

First Floor | 45.66m² – 491ft²

Kitchen	2500mm x 2120mm 8'2" x 6'11"
Living Room	4470mm x 3640mm 14'8" x 11'11"
Bedroom	3920mm x 3610mm 12'10" x 11'10"
Shower Room	2500mm x 2120mm 8'2" x 6'11"
Balcony	3750mm x 1800mm 12'3" x 5'9"



These particulars are intended to give a fair and substantially correct overall description. Measurements have been taken at 1500mm skimming height. All dimensions are approximate. Bedroom measurements include the wardrobe if applicable. Room measurements include bay windows if applicable. Furniture layout is to give an indicative impression. Although all efforts have been made to ensure its accuracy at time of print dimensions, fixtures, fittings, finishes and specifications are subject to change without notice. The properties are sold unfurnished.

