

3 Cottage Meadow Way, £365,000

Other charges apply*

RICHMOND
VILLAGES

Part of Bupa



2



2



EPC - C



2 bedroom first floor apartment

A spacious 1st floor 2 bedroom apartment. At 1175 sqft, (109.2 sqm) the accommodation comprises of entrance hall, large sitting / dining room. Modern kitchen, master bedroom with en suite wet room, a second double bedroom with an additional and unique office space and guest shower room. The apartment is situated close to the main village center and village facilities.

Specification

- Spacious and bright living room with south- and west-facing windows overlooking the surrounding gardens and park land. Modern remote controlled electric fire with feature surround.
- Modern fitted kitchen with granite worktops, under cupboard lighting and built-in Neff appliances including electric oven and hob, fridge/freezer and dishwasher.
- Large master bedroom with fitted wardrobes.
- En-suite shower room with walk-in shower and fully fitted white suite.
- Second bedroom with south-facing window
- Guest shower room with walk-in shower and fully fitted white suite.
- Study with built-in desk, cupboards and bookshelves.
- Entrance hall with large storage cupboard and utility cupboard with Bosch washing machine and Bosch tumble dryer.
- Central heating radiators in all rooms. TV and satellite points*.
- Well stocked flower borders and lawns maintained by the Village Gardeners.
- Allocated parking space for one car.



*Satellite subscription not included.

Important Notice: These particulars are intended to give a fair and substantially correct overall description. **Other fees and charges apply**, please contact the Village Advisers for further details. Properties are sold on a 125 year lease and this property has 118 years remaining.

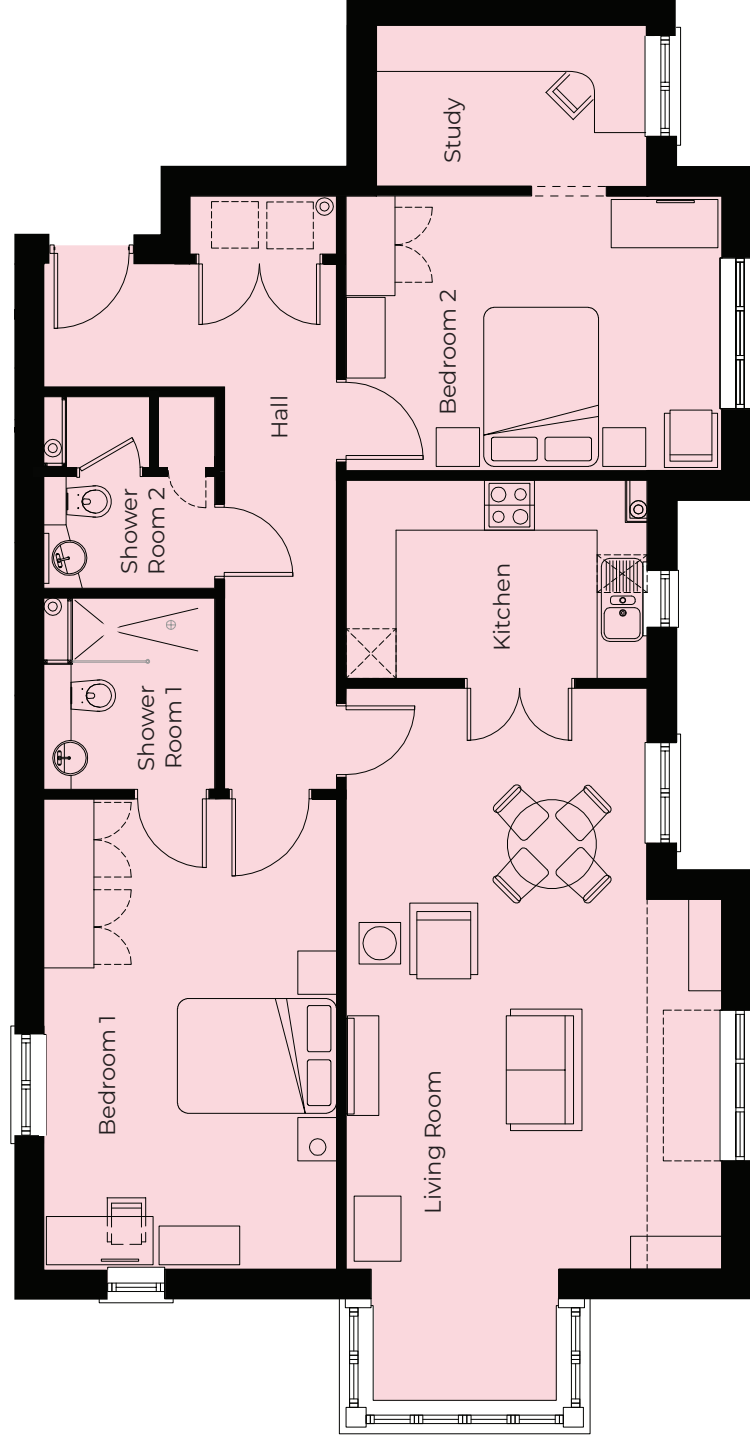
01332 794300

astonontrent@richmond-villages.com

Richmond Villages Aston-on-Trent,
Richmond Drive, Aston-on-Trent, Derbyshire DE72 2EA

3 Cottage Meadow Way

First Floor | 109.2m² – 1175ft²



- Kitchen**
3620mm x 2385mm
11'11" x 7'10"
- Living Room**
8557mm x 4520mm
28'1" x 14'10"
- Bedroom 1**
5655mm x 3515mm
18'7" x 11'6"
- Shower Room 1**
2300mm x 2050mm
7'7" x 6'9"
- Bedroom 2**
4520mm x 3300mm
14'10" x 10'10"
- Shower Room 2**
2300mm x 2050mm
7'7" x 6'9"
- Study**
3254mm x 1935mm
10'8" x 6'4"

These particulars are intended to give a fair and substantially correct overall description.

Measurements have been taken at 1500mm skirting height.

All dimensions are approximate. Bedroom measurements include the wardrobe if applicable. Room measurements include bay windows if applicable.

Furniture layout is to give an indicative impression. Although all efforts have been made to ensure its accuracy at time of print dimensions, fixtures, fittings, finishes and specifications are subject to change without notice.

The properties are sold unfurnished.

