

2 Coral Springs Way, £400,000*

(Other charges apply)

RICHMOND
VILLAGES

Part of Bupa

1F

2



1



EPC - C



2 bedroom independent living apartment

Richmond Villages are pleased to offer for sale this two bedroom, triple aspect, first floor apartment with spacious accommodation in excellent condition.

This apartment is in a desirable location within the retirement village with easy access to the outdoor terrace and bowling green, restaurant, bar, reception, library and wellness spa.

Specification

- Spacious living/dining room with French doors leading to balcony.
- Remote controlled electric fire and Bath stone effect surround.
- Modern fitted kitchenette with under cupboard lighting and integrated appliances including: Neff double oven and ceramic hob, Neff fridge freezer and dishwasher.
- 2 large bedrooms each with fitted wardrobes.
- En-suite to master bedroom.
- En-suite shower room with walk-in shower and fitted sanitary ware
- Entrance hall with storage and laundry cupboard
- Double glazing and central heating radiators in all rooms
- TV and satellite points*
- Laid lawns and well stocked flower borders maintained by the Village Gardeners
- Allocated parking space for one car

*Satellite subscription not included.

Important Notice: These particulars are intended to give a fair and substantially correct overall description. **Other fees and charges apply**, please contact the Village Advisers for further details. Properties are sold on a 125 year lease and this property has 116 years remaining. Some images feature CGI imagery for illustrative purposes only*

01993 894 000

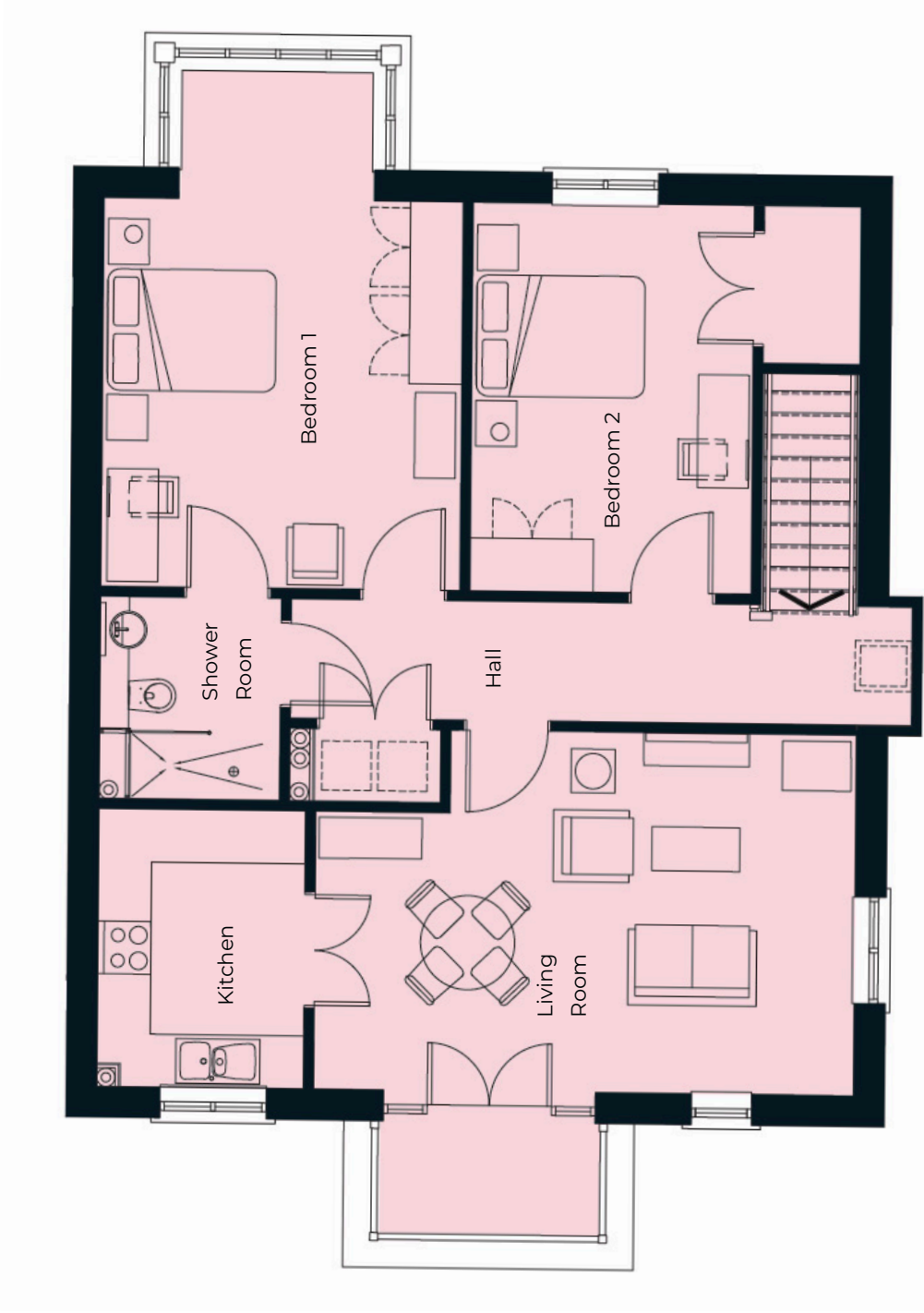
witney@richmond-villages.com

Richmond Villages Witney,
Coral Springs Way, Witney, Oxfordshire OX28 5DG

2 Coral Springs Way

First Floor | 92.6m² - 997ft²

Kitchen	3123mm x 2350mm 10'3" x 7'9"
Living Room	6140mm x 4068mm 20'2" x 13'4"
Bedroom 1	5863mm x 4063mm 19'3" x 13'4"
Shower Room	2300mm x 2050mm 7'7" x 6'9"
Bedroom 2	4384mm x 3142mm 14'5" x 10'4"



These particulars are intended to give a fair and substantially correct overall description.

Measurements have been taken at 1500mm skimming height.

All dimensions are approximate. Bedroom measurements include the wardrobe if applicable. Room measurements include bay windows if applicable.

Furniture layout is to give an indicative impression. Although all efforts have been made to ensure its accuracy at time of print dimensions, fixtures, fittings, finishes and specifications are subject to change without notice.

The properties are sold unfurnished.

