

# 25 Village Centre, £175,000

(Other charges apply)

RICHMOND  
VILLAGES

Part of Bupa



1



1



EPC - C



## 1 bedroom, first-floor apartment

A spacious first-floor one-bedroom apartment at 493 sqft. The apartment is situated close to the main village center and village facilities. It can be purchased as a Shared Ownership at £87,500\* on a 50% ownership. Single Stamp duty paid.

### Specification

- A bright and large living room with double doors leading to the kitchen. Feature remote-controlled, electric fireplace.
- Double doors with glazing lead from the living room to the kitchenette, with a range of wall and base units with under cupboard lighting. Stainless steel single bowl sink unit with mixer taps. Integrated Neff fridge.
- Main bedroom with double doors leading to an en-suite shower room.
- En-suite shower room with large shower area and screen.
- TV and satellite points\*.
- Well stocked flower borders and lawns maintained by the Village Gardeners.
- Allocated parking space for one car.



\*Satellite subscription not included.

Important Notice: These particulars are intended to give a fair and substantially correct overall description. Other fees and charges apply, please contact the Village Advisers for further details. Properties are sold on a 125 year lease and this property has 125 years remaining.

01332 899467

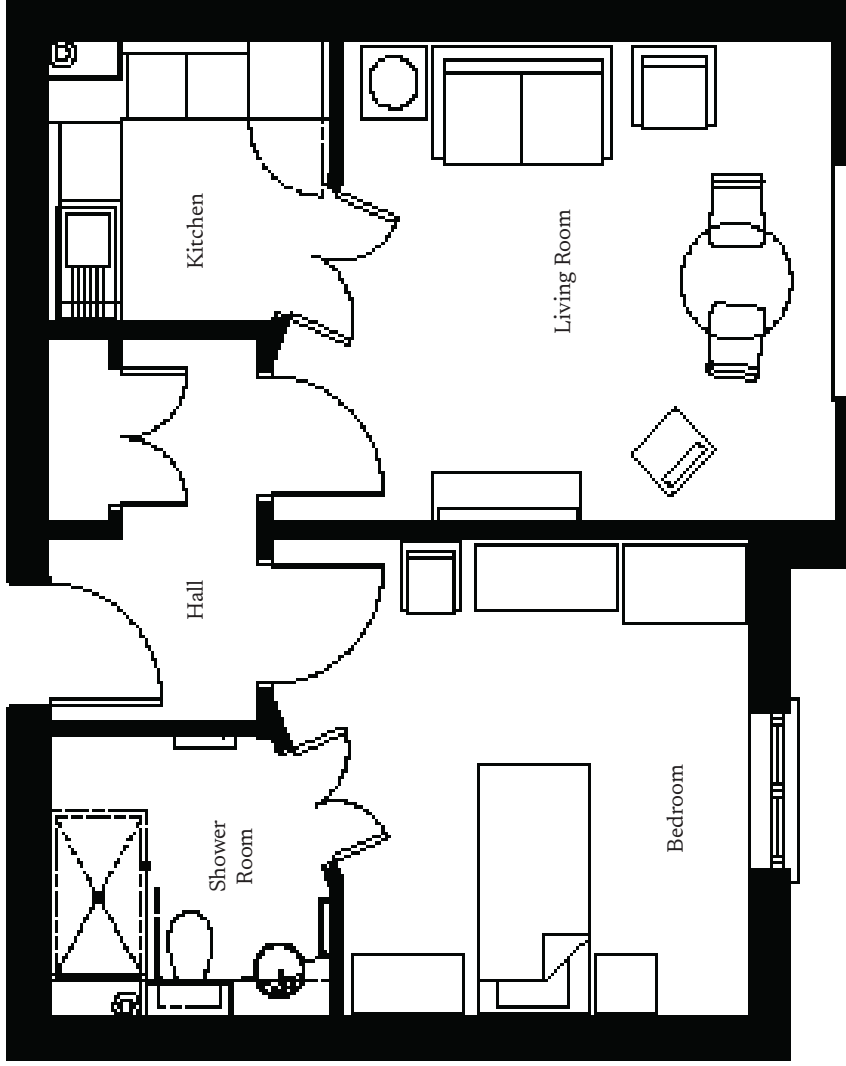
astonontrent@richmond-villages.com

Richmond Villages Aston-on-Trent,  
Richmond Drive, Aston-on-Trent, Derbyshire, DE72 2EA

# 25 Village Centre

First Floor | 493ft<sup>2</sup>

- Kitchen  
2300mm x 2180mm  
7'7" x 7'2"
- Living Room  
4010mm x 3710mm  
13'2" x 12'2"
- Bedroom  
3710mm x 3335mm  
12'2" x 10'11"
- En-suite  
2300mm x 2180mm  
7'7" x 7'2"



These particulars are intended to give a fair and substantially correct overall description. Measurements have been taken at 1500mm skirting height. All dimensions are approximate. Bedroom measurements include the wardrobe if applicable. Room measurements include bay windows if applicable. Furniture layout is to give an indicative impression. Although all efforts have been made to ensure its accuracy at time of print dimensions, fixtures, fittings, finishes and specifications are subject to change without notice. The properties are sold unfurnished.

