

# No. 8 Village Centre – £190,000

RICHMOND  
VILLAGES

Part of Bupa

GF

1



1



EPC - C



## 1 bedroom assisted living apartment

Richmond Villages are pleased to offer this beautifully presented, south facing, ground floor apartment with views over the bowling green. This apartment is in a desirable location within the retirement village with easy access to the restaurant, bar, reception, art studio, library, wellness spa, outdoor seating areas, bowling green, café and shop

### Specification

- Spacious living room with bay window, and remote controlled electric fire with bath stone effect surround.
- Modern fitted kitchenette with under cupboard lighting and built in fridge
- Main bedroom with views of the bowling green
- En-suite shower room with walk-in shower and fitted sanitary ware
- Entrance hall with storage cupboard
- Central heating radiators in all rooms
- TV and satellite points\*
- Laid lawns and well stocked flower borders maintained by the Village Gardeners
- Allocated parking space for one car



\*Satellite subscription not included.

Important Notice: These particulars are intended to give a fair and substantially correct overall description. **Other fees and charges apply**, please contact the Village Advisers for further details. Properties are sold on a 125 year lease and this property has 111 years remaining.

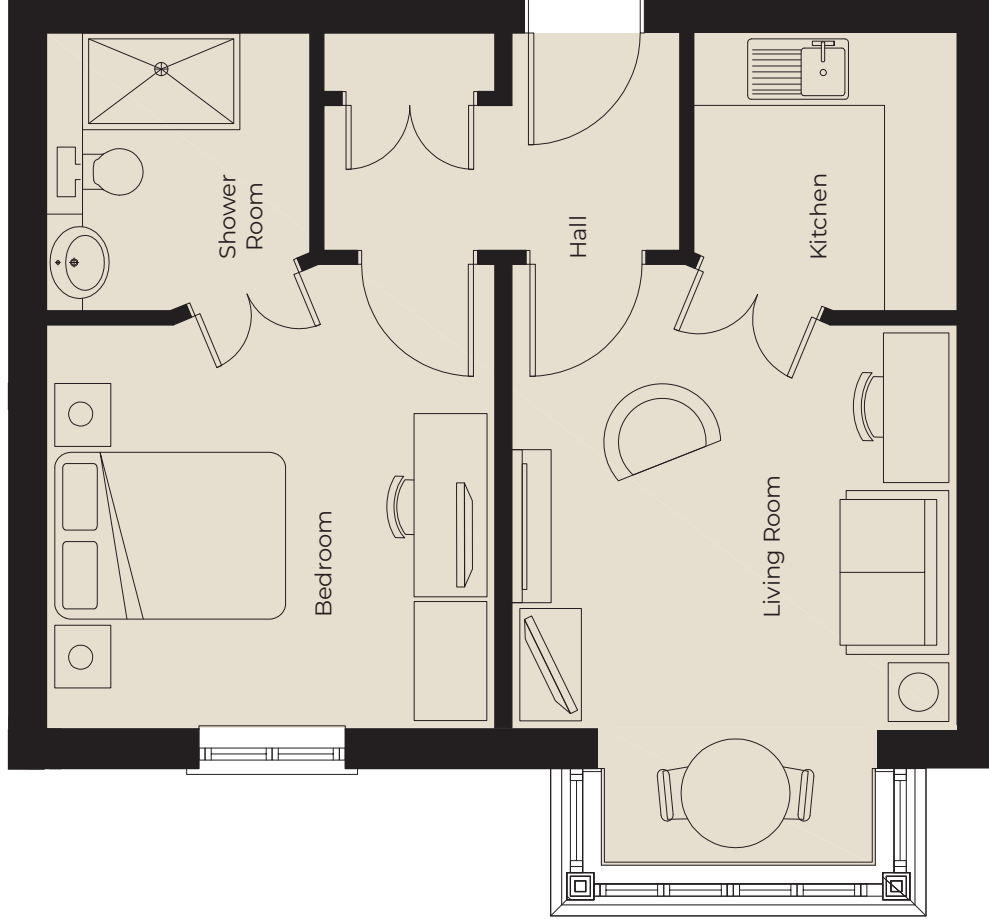
01235 773970

letcomberegis@richmond-villages.com

Richmond Villages Letcombe Regis,  
South Street, Letcombe Regis, Oxfordshire OX12 9RG

# No. 8 Village Centre

Ground Floor | 494ft<sup>2</sup>



**Kitchenette**

2300mm x 2180mm  
7'7" x 7'2"

**Sitting Room**

3835mm x 3685mm  
12'7" x 12'1"

**Bedroom**

3835mm x 3710mm  
12'7" x 12'2"

**Shower Room**

2300mm x 2180mm  
7'7" x 7'2"

These particulars are intended to give a fair and substantially correct overall description.

Measurements have been taken at 1500mm skimming height.

All dimensions are approximate. Bedroom measurements include the wardrobe if applicable. Room measurements include bay windows if applicable.

Furniture layout is to give an indicative impression. Although all efforts have been made to ensure its accuracy at time of print dimensions, fixtures, fittings, finishes and specifications are subject to change without notice.

The properties are sold unfurnished.

