

52 Pavilion Walk – £465,000

RICHMOND
VILLAGES

Part of Bupa

FF

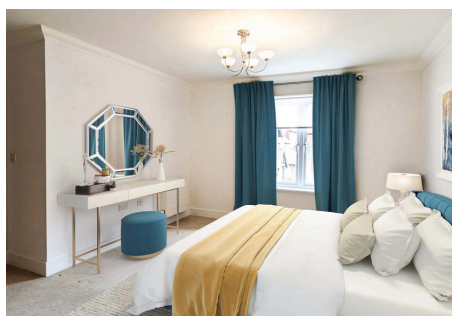
2



2



EPC - C



2 bedroom independent living apartment

This very well-presented two-bedroom apartment with French doors leading to a private balcony. The apartment has easy access to the village facilities including restaurant, café, village shop, reception, Wellness Spa and library.

Specification

- Spacious living room with French doors opening on to a private balcony. Electric fire with Bath stone effect surround.
- Modern fitted kitchen with undercupboard lighting and integrated appliances.
- Master bedroom with en-suite shower room.
- En-suite shower room with walk-in shower, fitted sanitary ware and heated towel rail.
- Second double bedroom.
- Bathroom with bath with shower over, fitted sanitary ware and heated towel rail.
- Entrance hall with storage cupboard.
- TV and satellite points*
- Laid lawns and well stocked flower borders maintained by the Village Gardeners. Allocated parking space for one car.

*Satellite subscription not included.

Important Notice: These particulars are intended to give a fair and substantially correct overall description. **Other fees and charges apply**, please contact the Village Advisers for further details. CGI imagery is used for guidance and illustrative purposes only and does not represent the specific apartment for sale. Properties are sold on a 125 year lease and this property has 113 years remaining.

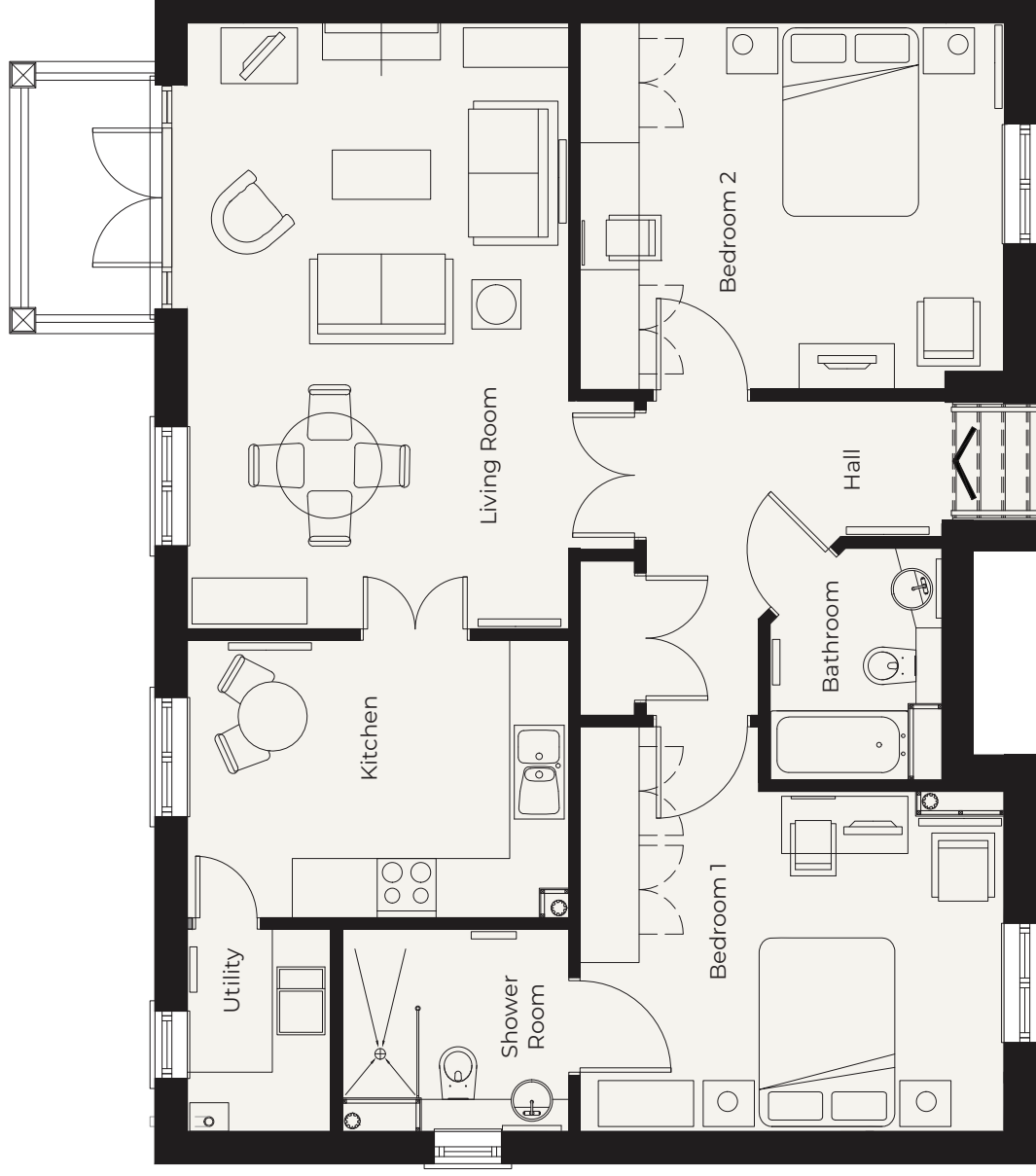
01235 773970

letcomberegis@richmond-villages.com

Richmond Villages Letcombe Regis,
South Street, Letcombe Regis, Oxfordshire OX12 9RG

52 Pavilion Walk

First Floor | 96.57m² (1039.5ft²)



- Kitchen**
3882mm x 2812mm
12'9" x 9'3"
- Utility Room**
2050mm x 1467mm
6'9" x 4'10"
- Living Room**
6141mm x 3882mm
20'2" x 12'9"
- Bedroom 1**
4313mm x 3446mm
14'2" x 11'4"
- Shower Room**
2300mm x 2050mm
7'7" x 6'9"
- Bedroom 2**
4313mm x 3715mm
14'2" x 12'2"
- Bathroom**
2350mm x 1745mm
7'9" x 5'9"

These particulars are intended to give a fair and substantially correct overall description.

Measurements have been taken at 1500mm skirting height.

All dimensions are approximate. Bedroom measurements include the wardrobe if applicable. Room measurements include bay windows if applicable.

Furniture layout is to give an indicative impression. Although all efforts have been made to ensure its accuracy at time of print dimensions, fixtures, fittings, finishes and specifications are subject to change without notice.

The properties are sold unfurnished.

