

# 14 Milestones Close – OIEO £400,000

RICHMOND  
VILLAGES

Part of Bupa

(Other charges apply)



2



2



EPC - C



## 2 bedroom ground floor apartment

A well-presented, light and generously proportioned ground-floor apartment available for sale with no upward chain. The apartment benefits from a private entrance hall, living room with views over looking the wild flower meadows, fitted kitchen, two good sized bedrooms, en-suite shower room, bathroom and a private west facing patio. The apartment is situated close to the main village centre and its wealth of onsite facilities.



### Specification

- Spacious and bright living room with French doors leading to the private west facing patio. Modern remote controlled electric fire and surround.
- Modern fitted kitchen with granite worktops, under cupboard lighting and built in Neff appliances including electric oven and hob, fridge/freezer and dishwasher.
- Master bedroom with fitted wardrobes.
- En-suite shower room with walk-in shower and fully fitted white suite.
- Second double bedroom.
- Bathroom with shower over bath and fully fitted white suite.
- Entrance hall with large storage cupboard with Bosch washing machine and Bosch tumble dryer.
- Central heating radiators in all rooms. TV and satellite points\*.
- Well stocked flower borders and lawns maintained by the Village Gardeners.
- Allocated parking space for one car.

\*Satellite subscription not included.

Important Notice: These particulars are intended to give a fair and substantially correct overall description. **Other fees and charges apply**, please contact the Village Advisers for further details. Properties are sold on a 125 year lease and this property has 119 years remaining.



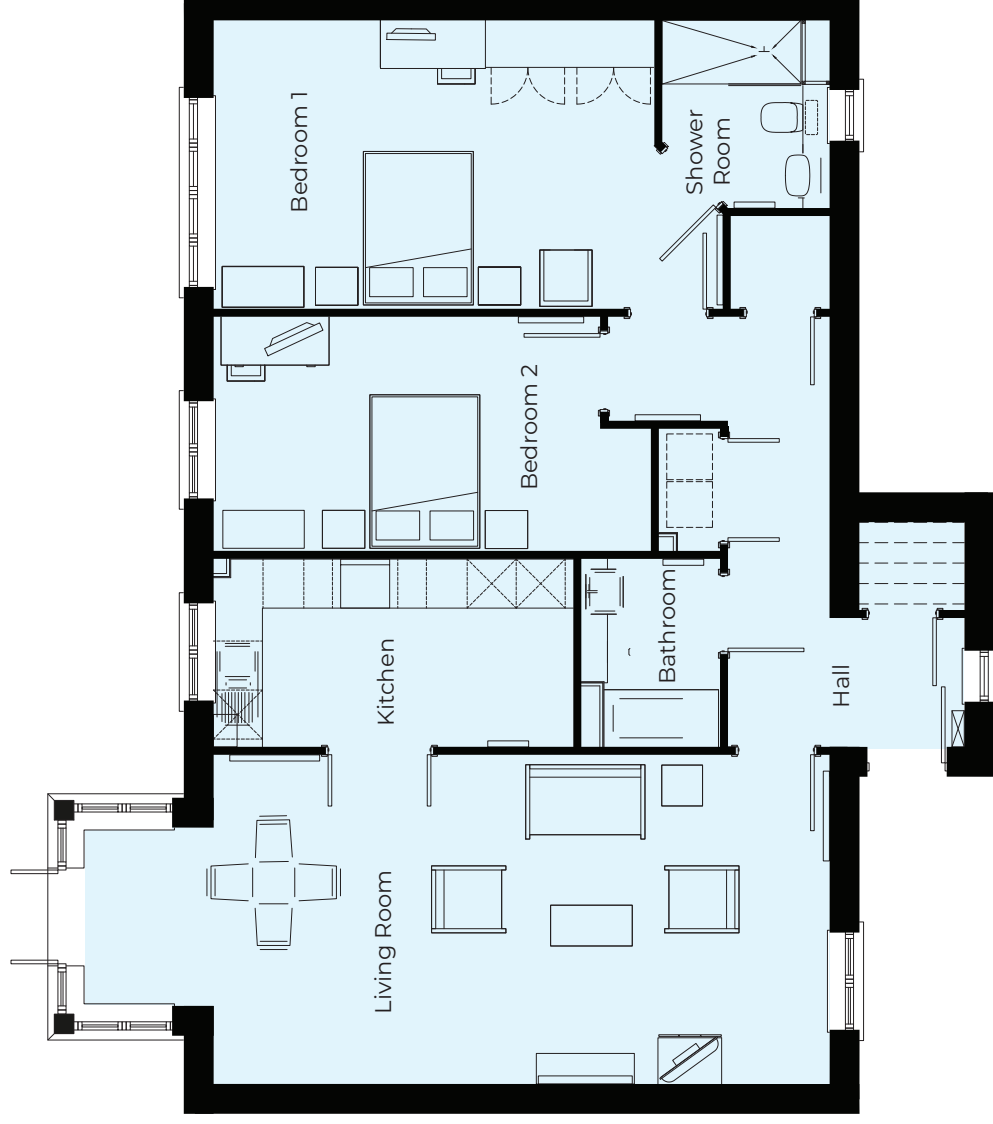
01332 794300

astonontrent@richmond-villages.com

Richmond Villages Aston-on-Trent,  
Richmond Drive, Aston-on-Trent, Derbyshire DE72 2EA

# 14 Milestones Close

Ground Floor | 105.8m<sup>2</sup> – 1139ft<sup>2</sup>



<b>Kitchen</b>	4408mm x 2300mm 14'5" x 7'5"
<b>Living Room</b>	9152mm x 4033mm 30' x 13'2"
<b>Bedroom 1</b>	6241mm x 3536mm 20'5" x 11'6"
<b>Shower Room</b>	2300mm x 2050mm 7'5" x 6'7"
<b>Bedroom 2</b>	5357mm x 2869mm 17'6" x 9'4"
<b>Bathroom</b>	2300mm x 1700mm 7'5" x 5'6"

These particulars are intended to give a fair and substantially correct overall description. Measurements have been taken at 1500mm skirting height. All dimensions are approximate. Bedroom measurements include the wardrobe if applicable. Room measurements include bay windows if applicable. Furniture layout is to give an indicative impression. Although all efforts have been made to ensure its accuracy at time of print dimensions, fixtures, fittings, finishes and specifications are subject to change without notice. The properties are sold unfurnished.

