

50 Village Centre – £325,000

(Other charges apply)

RICHMOND
VILLAGES

Part of Bupa

SF

2



2



EPC - C



2 bedroom assisted living apartment

An attractive second floor two-bedroom, two-shower room apartment spanning over 1060 sqft. The accommodation comprises an entrance hall with storage cupboard, living room, kitchenette and two bedrooms with en-suite shower rooms. Under-floor heating throughout with carpets, flooring and curtains included. The apartment is situated within the main village centre building close to all facilities.

Specification

- Spacious living room with large window. Modern remote controlled electric fire and surround.
- Modern fitted kitchenette with range of wall and base units, integrated Neff fridge and undercupboard lighting.
- Spacious master bedroom with large window and fitted wardrobes.
- En-suite shower room with walk-in shower and fully fitted white suite.
- Second double bedroom with window.
- Second en-suite shower room with walk-in shower and fully fitted white suite.
- Entrance hall with large storage cupboard.
- TV and satellite points*.
- Well stocked flower borders and lawns maintained by the Village Gardeners.
- Allocated parking space for one car.



*Satellite subscription not included.

Important Notice: These particulars are intended to give a fair and substantially correct overall description. **Other fees and charges apply**, please contact the Village Advisers for further details. Properties are sold on a 123 year lease and this property has 125 years remaining.

01332 794300

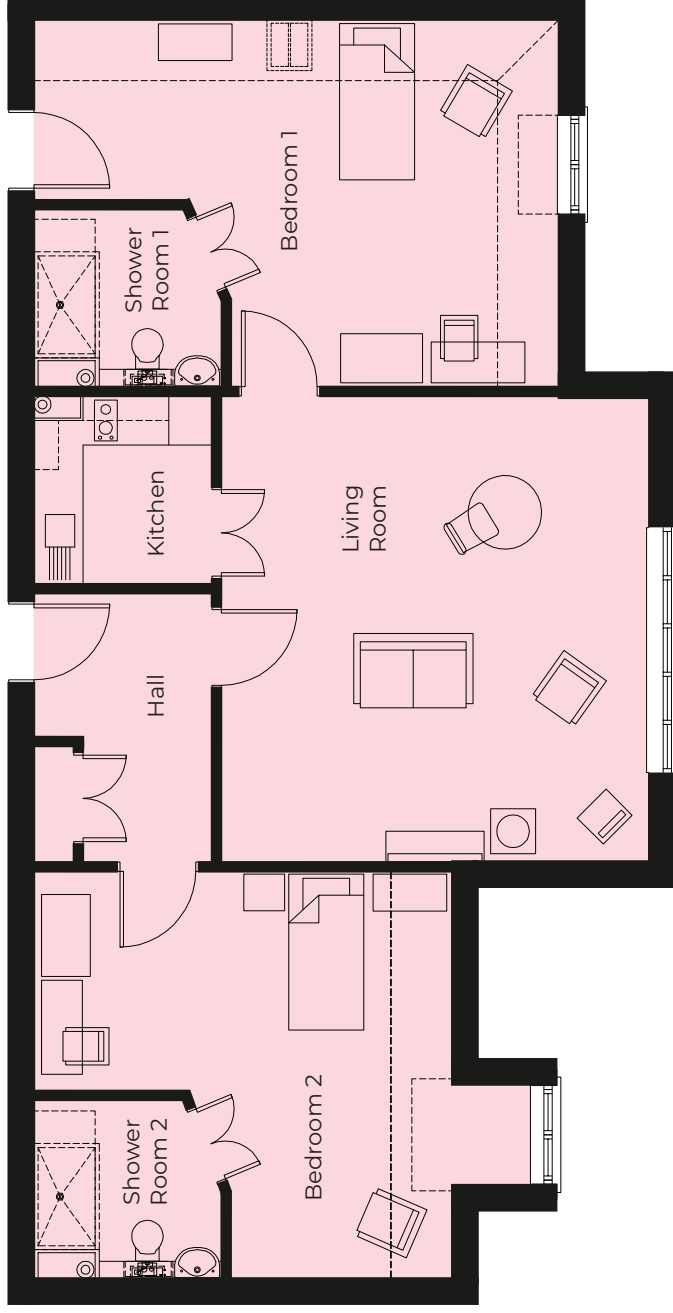
astonontrent@richmond-villages.com

Richmond Villages Aston-on-Trent,
Richmond Drive, Aston-on-Trent, Derbyshire DE72 2EA

50 Village Centre

Second Floor | 98.73m² – 1062.72ft²

Kitchenette	2300mm x 2180mm 7'7" x 7'2"
Living Room	5704mm x 5230mm 18'9" x 17'2"
Bedroom 1	6433mm x 4498mm 21'1" x 14'9"
Shower Room 1	2300mm x 2180mm 7'7" x 7'2"
Bedroom 2	5129mm x 4981mm 16'10" x 16'4"
Shower Room 2	2300mm x 2180mm 7'7" x 7'2"



These particulars are intended to give a fair and substantially correct overall description.

Measurements have been taken at 1500mm skimming height.

All dimensions are approximate. Bedroom measurements include the wardrobe if applicable. Room measurements include bay windows if applicable.

Furniture layout is to give an indicative impression. Although all efforts have been made to ensure its accuracy at time of print dimensions, fixtures, fittings, finishes and specifications are subject to change without notice.

The properties are sold unfurnished.

