

# 8 Ashfields Grove, £320,000

(Other charges apply)

RICHMOND  
VILLAGES

Part of Bupa

FF

2



2



EPC - C



## 2 bedroom first floor apartment

8 Ashfields Close is a spacious first-floor, two-bedroom apartment. The accommodation features entrance hall, fitted kitchen, living room with bay window, main bedroom with an en-suite shower room, a second double bedroom and a shower room. The apartment is situated close to the main village centre and village facilities and enjoys a pleasant West-facing aspect overlooking courtyard gardens.

### Specification

- A large bright lounge / dining room with a double glazed West-facing bay window. Remote controlled electric fire and surround. T.V. satellite and telephone points.
- Double doors with glazing lead from the sitting room to the fitted kitchen with granite worktops and a range of wall and base units with under cupboard lighting.
- A spacious double bedroom with double glazed window, fitted white double wardrobes with shelves and hanging rails.
- A double bedroom with double glazed East-facing window
- En-suite shower room with large shower area and screen.
- Second shower room with walk-in shower.
- TV and satellite points\*.
- Well stocked flower borders and lawns maintained by the Village Gardeners.
- Allocated parking space for one car.



\*Satellite subscription not included.

Important Notice: These particulars are intended to give a fair and substantially correct overall description. Other fees and charges apply, please contact the Village Advisers for further details. Properties are sold on a 125 year lease and this property has 119 years remaining.

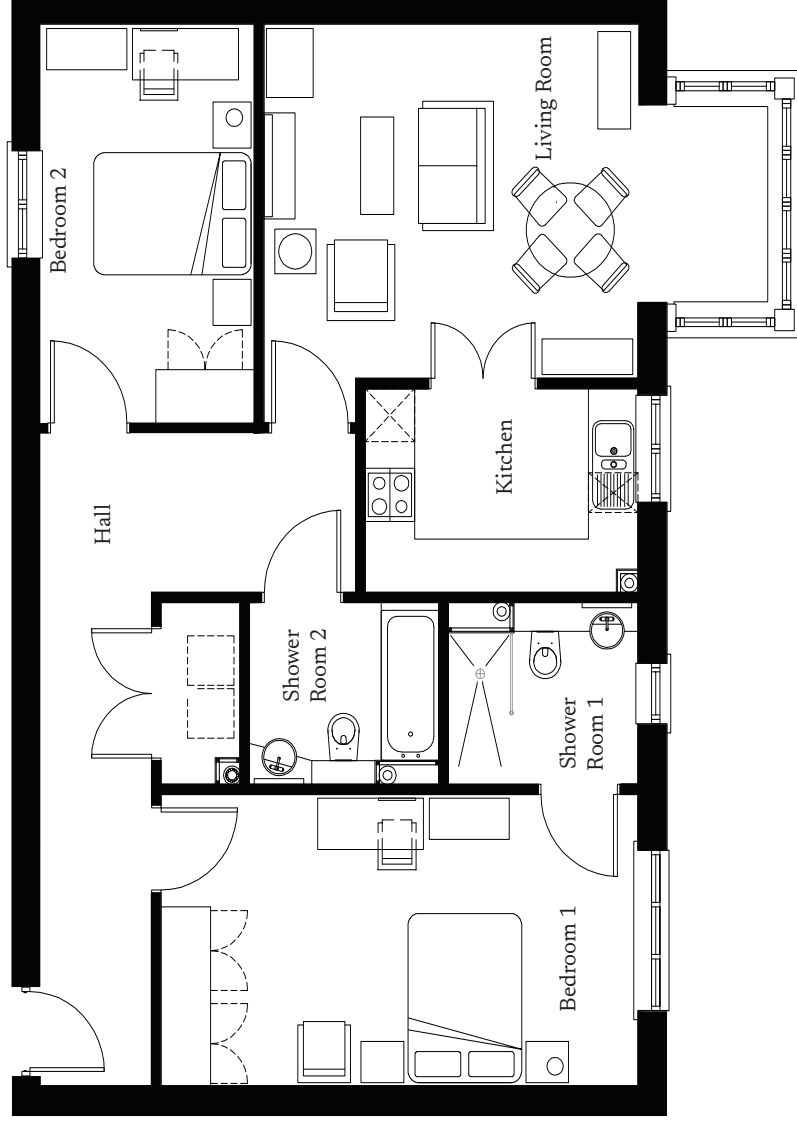
01332 794300

astonontrent@richmond-villages.com

Richmond Villages Aston-on-Trent,  
Richmond Drive, Aston-on-Trent, Derbyshire, DE72 2EA

# 8 Ashfields Grove

First Floor | 972ft<sup>2</sup>



- Kitchen  
3275mm x 2300mm  
10'9" x 7'7"
- Living Room  
6107mm x 4500mm  
20'0" x 14'9"
- Bedroom 1  
5785mm x 3270mm  
19' x 10'9"
- Bedroom 2  
4500mm x 2060mm  
14'9" x 8'6"
- Shower room  
2300mm x 2060mm  
14'9" x 8'6"
- Shower room 2  
2300mm x 2050mm  
7'7" x 6'9"

These particulars are intended to give a fair and substantially correct overall description. Measurements have been taken at 1500mm ceiling height.

All dimensions are approximate. Bedroom measurements include the wardrobe if applicable. Room measurements include bay windows if applicable. Furniture layout is to give an indicative impression. Although all efforts have been made to ensure its accuracy at time of print dimensions, fixtures, fittings, finishes and specifications are subject to change without notice.

The properties are sold unfurnished.

