

# 8 Bradmore Gardens, £320,000

(Other charges apply)

RICHMOND  
VILLAGES

Part of Bupa



2



2



EPC - C



## 2 bedroom ground floor apartment

A spacious ground-floor, two-bedroom apartment. The accommodation comprises an entrance hall, fitted kitchen, living room with bay window to patio, main bedroom with en-suite shower room, a second double bedroom and a bathroom. The apartment is situated close to the main village centre and village facilities and enjoys a pleasant East-facing aspect overlooking courtyard gardens.

### Specification

- Large bright living room with a East-facing bay window with a courtyard view. Modern remote controlled electric fire and surround.
- Modern fitted kitchen with granite worktops, under cupboard lighting and built in Neff appliances including electric oven and hob, extractor fan, fridge/freezer and dishwasher.
- Spacious main bedroom with fitted wardrobes.
- Second double bedroom with built-in bookcase.
- Second shower room with walk-in shower and fully fitted white suite.
- Entrance hall with large storage cupboard with Bosch washing machine and Bosch tumble dryer.
- Central heating radiators in all rooms. TV and satellite points\*.
- Well stocked flower borders and lawns maintained by the Village Gardeners.
- Allocated parking space for one car.



\*Satellite subscription not included.

Important Notice: These particulars are intended to give a fair and substantially correct overall description. Other fees and charges apply, please contact the Village Advisers for further details. Properties are sold on a 125 year lease and this property has 121 years remaining.

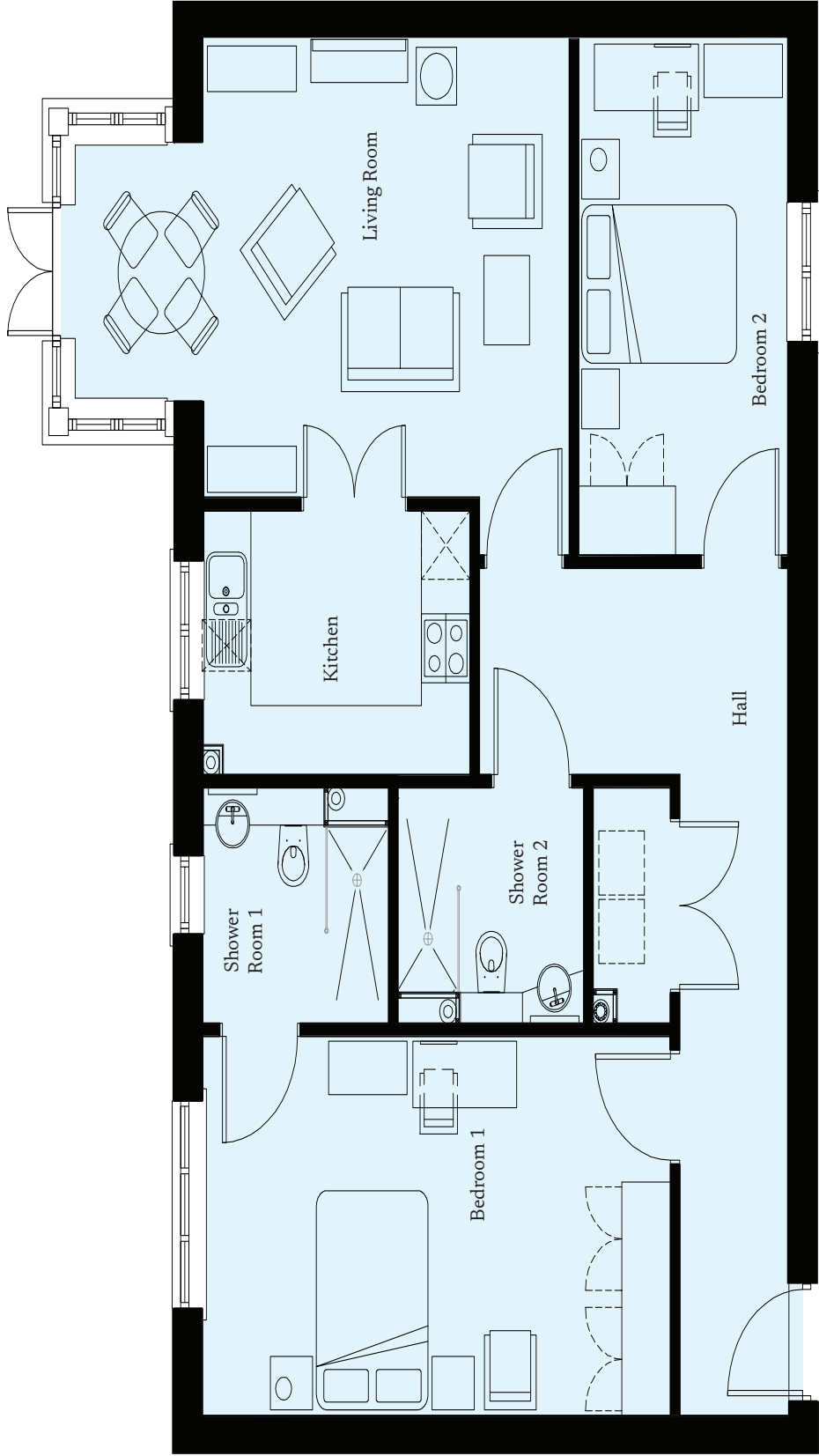
01332 794 300

astonontrent@richmond-villages.com

Richmond Villages Aston-on-Trent,  
Richmond Drive, Aston-on-Trent, Derbyshire, DE72 2EA

# 8 Bradmore Gardens

Ground Floor | 90.5m – 974ft



<b>Kitchen</b>	3310mm x 2300mm
	10'10" x 7'7"
<b>Living Room</b>	6107mm x 3965mm
	20'0" x 13'0"
<b>Bedroom 1</b>	5785mm x 3270mm
	19'0" x 10'9"
<b>Shower Room 1</b>	2300mm x 2050mm
	7'7" x 6'9"
<b>Bedroom 2</b>	4500mm x 2600mm
	14'9" x 8'6"
<b>Shower Room 2</b>	2265mm x 2050mm
	7'5" x 6'9"

These particulars are intended to give a fair and substantially correct overall description.

Measurements have been taken at 1500mm skirting height.

All dimensions are approximate. Bedroom measurements include the wardrobe if applicable. Room measurements include bay windows if applicable.

Furniture layout is to give an indicative impression. Although all efforts have been made to ensure its accuracy at time of print dimensions, fixtures, fittings and specifications are subject to change without notice.

The properties are sold unfurnished.

