

# 32 Cookham – £284,995

(Other charges apply)

RICHMOND  
VILLAGES

Part of Bupa

SF

1



1



EPC - C



## 1 bedroom independent living apartment

Richmond Villages are pleased to offer for sale this light and spacious, one bedroom, second floor apartment with two balconies. The apartment is well situated within the retirement village with easy access to village facilities including, restaurant bar and café, library, hair salon, games lawn and terrace areas.

### Specification

- Spacious living/dining room with French doors leading to a south-facing balcony. Remote controlled electric fire with feature fire surround.
- Modern fitted kitchen with under cupboard lighting and integrated appliances including: electric oven, electric hob, extractor fan, dishwasher, fridge freezer and washer dryer.
- Large master bedroom with fitted light oak wardrobe and French doors leading to a west-facing balcony.
- Shower room with walk-in shower, fitted white suite and heated towel rail.
- Entrance hall with storage cupboard
- Double glazing and central heating radiators in all rooms
- TV and satellite points\*
- Well stocked flower borders and lawns maintained by the Village Gardeners
- Allocated parking space for one car.



\*Satellite subscription not included.

Important Notice: These particulars are intended to give a fair and substantially correct overall description. **Other fees and charges apply**, please contact the Village Advisers for further details. Properties are sold on a 125 year lease and this property has 108 years remaining.

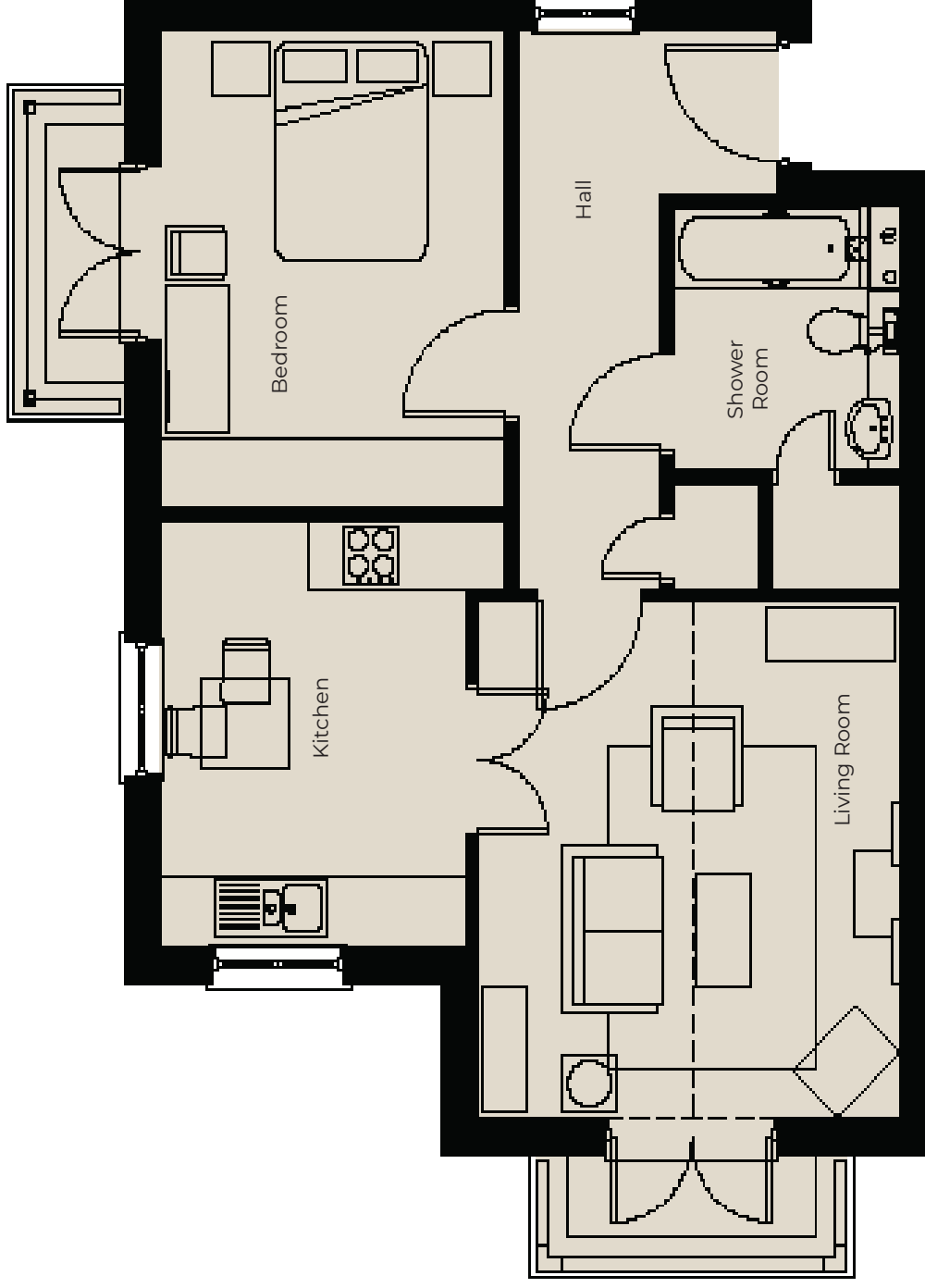
01604 432600

northampton@richmond-villages.com

Richmond Villages Northampton,  
Bridge Meadow Way, Grange Park, Northampton NN4 5EB

# 32 Cookham

Second Floor | 656ft<sup>2</sup>



- Kitchen**  
3708mm x 2769  
12'2" x 9'1"
- Living Room**  
4521mm x 3835mm  
14'10" x 12'7"
- Bedroom 1**  
3150mm x 3556mm  
10'4" x 11'8"
- Shower Room**  
2311mm x 2286mm  
7'7" x 7'6"

These particulars are intended to give a fair and substantially correct overall description.

Measurements have been taken at 1500mm skimming height.

All dimensions are approximate. Bedroom measurements include the wardrobe if applicable. Room measurements include bay windows if applicable.

Furniture layout is to give an indicative impression. Although all efforts have been made to ensure its accuracy at time of print dimensions, fixtures, fittings, finishes and specifications are subject to change without notice.

The properties are sold unfurnished.