

3 Milestones Close, £350,000

(Other charges apply)

RICHMOND
VILLAGES

Part of Bupa

FF

2



2



EPC - C



2 bedroom first floor apartment

A spacious, first-floor, two-bedroom apartment. At 974 sqft (90.5 sqm), the accommodation comprises entrance hall, a large open-plan modern kitchen/diner/living room, main bedroom with en-suite shower room, a second double bedroom and a family bathroom with bath. The apartment is situated close to the main village centre and village facilities.

Specification

- A spacious and bright living room with large East-facing bay window. Modern remote controlled electric fire and surround.
- Modern fitted kitchen with granite worktops, under cupboard lighting and built in Neff appliances including electric oven and hob, fridge/freezer and dishwasher.
- Main bedroom with South-East facing aspect.
- En-suite shower room with walk-in shower and fully fitted white suite.
- Second double bedroom.
- Bathroom with shower over bath and fitted white suite.
- Entrance hall with large storage cupboard with Bosch washing machine and Bosch tumble dryer
- TV and satellite points*.
- Well stocked flower borders and lawns maintained by the Village Gardeners.
- Allocated parking space for one car.

*Satellite subscription not included.

Important Notice: These particulars are intended to give a fair and substantially correct overall description. Other fees and charges apply, please contact the Village Advisers for further details. Properties are sold on a 125 year lease and this property has 121 years remaining.

01332 794 300

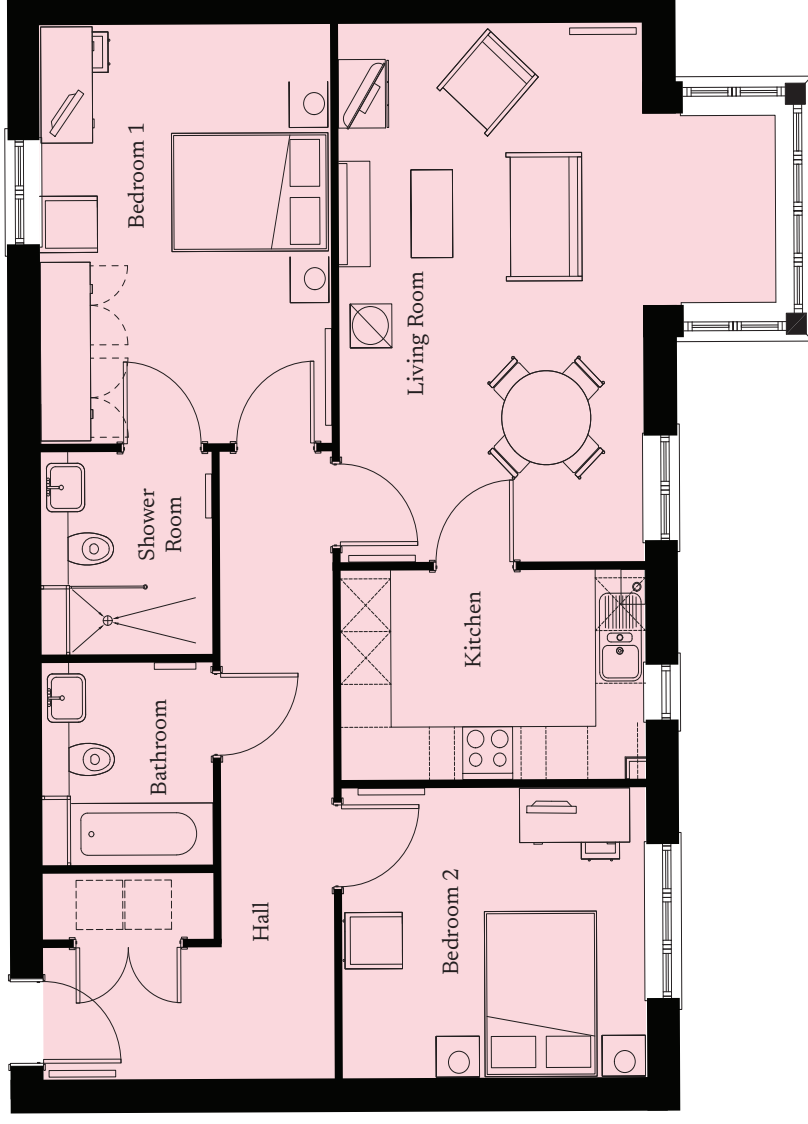
astonontrent@richmond-villages.com

Richmond Villages Aston-on-Trent,
Richmond Drive, Aston-on-Trent, Derbyshire, DE72 2EA

3 Milestones Close

First Floor | 974ft²

Kitchen	3659mm x 2384mm 12' x 7'8"
Living Room	6125mm x 5270mm 20'10" x 17'3"
Bedroom 1	4766mm x 3495mm 15'6" x 11'5"
Bedroom 2	3659mm x 3299mm 12' x 10'8"
En suite	2300mm x 2050mm 7'5" x 6'7"
Bathroom	2300mm x 2050mm 7'5" x 6'7"



These particulars are intended to give a fair and substantially correct overall description. Measurements have been taken at 1500mm ceiling height.

All dimensions are approximate. Bedroom measurements include the wardrobe if applicable. Room measurements include bay windows if applicable.

Furniture layout is to give an indicative impression. Although all efforts have been made to ensure its accuracy at time of print dimensions, fixtures, fittings, finishes and specifications are subject to change without notice.

The properties are sold unfurnished.

