

Village Suites

First phase of Village Suites
at **Richmond Wood Norton Retirement Village**



RICHMOND
WOOD NORTON

Part of Bupa



Computer generated image of Richmond Wood Norton



Located within the main Village Centre Building the Village Suites at Richmond Wood Norton have been designed to incorporate the very highest quality of finish that you would expect at a Richmond Village. From ergonomically designed kitchens to walk in showers, everything has your comfort and ease of use in mind.



Wellness Spa

The Avenue
Apartments

Village Centre
Building

The Avenue
Apartments

Restaurant & Bar

The Orchard
Apartments

Village Map

The Village Suites

RETAIN YOUR INDEPENDENCE AND ENJOY A BETTER QUALITY OF LIFE IN A ONE- OR TWO-BEDROOM VILLAGE SUITE. HERE YOU CAN ENJOY LIFE TO THE FULL WHILE THE RICHMOND VILLAGES' TEAM TAKES CARE OF YOUR DAY-TO-DAY CHORES.

If you, or a family member, want to retain independence yet would welcome a little help and support, then our one- or two-bedroom Village Suites could well be the answer.

A move to a Village Suite at Richmond Wood Norton means enjoying life in a safe, caring, socially active and supportive environment. The Suites are situated within the main Village Centre Building, close to all the amenities such as the restaurant, library and Wellness Spa.

All residents of the Village Suites have a hotel-style package designed to take away the daily chores and allow people more quality time to enjoy the things that they prefer to do.

The package includes the following:

- All meals either taken in the restaurant or served in your apartment
- Housekeeping service including stocking of your kitchen with basic provisions e.g. milk, butter, bread, cereals, tea, coffee etc
- Laundry service including personal clothing, bedding and towels, collected and delivered to your apartment
- Utilities – Heating, lighting and water



Living in a Village Suite is all about

- Enhancing lifestyle and quality of life
- Enjoying the comforts of your own beautifully appointed apartment
- Clubs, activities and entertainment arranged around your interests
- Great food, freshly prepared to suit your individual tastes
- All chores such as cleaning, washing and ironing taken care of, leaving you free to enjoy other pursuits
- A quality environment where you can make friends and get to know like-minded people
- Bespoke care and support packages



Each Suite offers

- Sitting room
- Ergonomically designed modern kitchenette
- Master bedroom with stylish en-suite
- Emergency 24-hour call system to on-site care team
- Membership to the Richmond Villages Wellness Spa



Village Suites

FLOOR 2

Village Suite 01

Floor 2 | 104.80m² – 1128.06ft²

Kitchen

2300mm x 2145mm
7'7" x 7'

Sitting Room

7505mm x 5951mm
24'7" x 19'6"

Bedroom 1

7166mm x 3792mm
23'6" x 12'5"

Shower Room 1

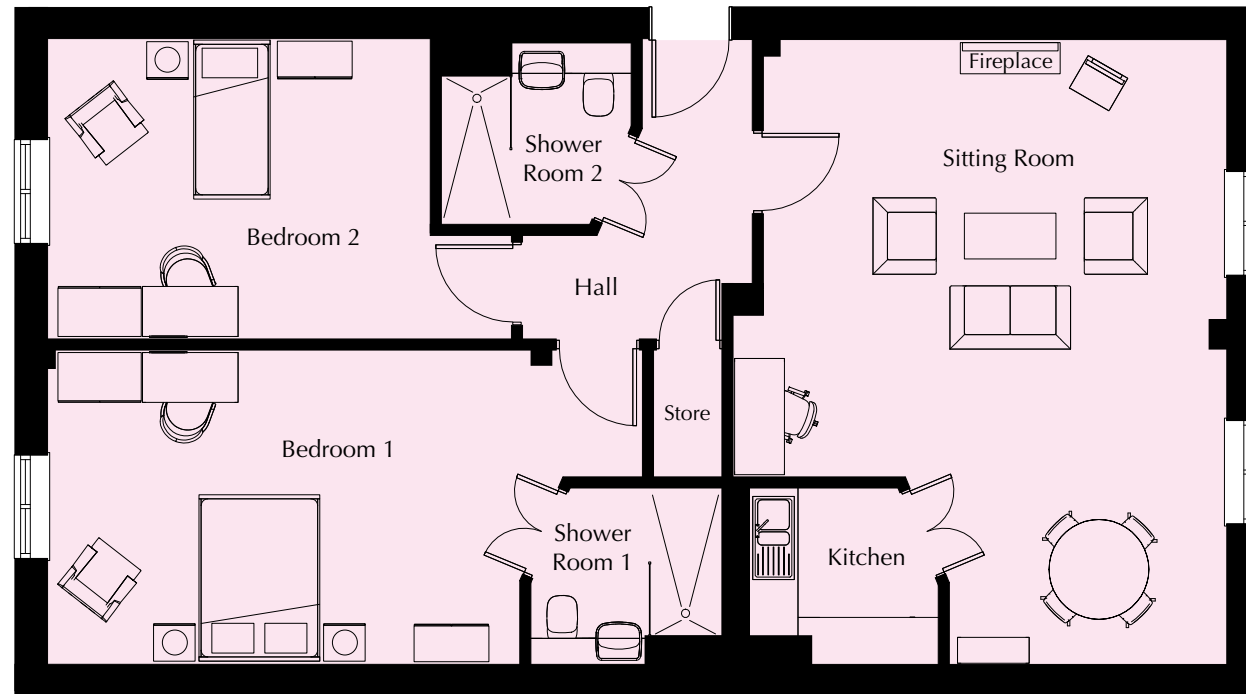
2300mm x 2180mm
7'7" x 7'2"

Bedroom 2

5591mm x 3557mm
18'4" x 11'8"

Shower Room 2

2300mm x 2180mm
7'7" x 7'2"

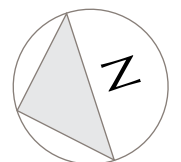


These particulars are intended to give a fair and substantially correct overall description.

Measurements have been taken at 1500mm skeliling height.

All dimensions are approximate. Room measurements include bay windows if applicable.

Furniture layout is to give an indicative impression. Although all efforts have been made to ensure its accuracy at time of print dimensions, fixtures, fittings, finishes and specifications are subject to change without notice.



Village Suite 02

Floor 2 | 45.87m² – 493.74ft²

Kitchen

2300mm x 2180mm
7'7" x 7'2"

Sitting Room

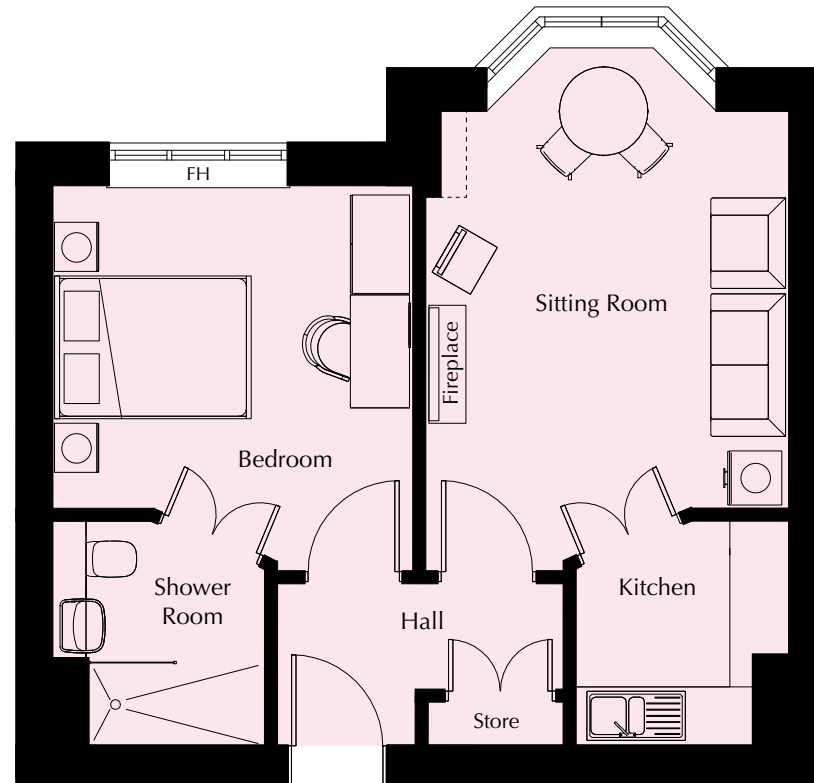
5337mm x 3713mm
17'6" x 12'2"

Bedroom

3941mm x 3634mm
12'11" x 11'11"

Shower Room

2300mm x 2180mm
7'7" x 7'2"



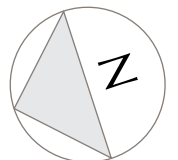
FH – Full height double glazed window.

These particulars are intended to give a fair and substantially correct overall description.

Measurements have been taken at 1500mm ceiling height.

All dimensions are approximate. Room measurements include bay windows if applicable.

Furniture layout is to give an indicative impression and although all efforts have been made to ensure its accuracy at time of print; fixtures, fittings, finishes and specifications are subject to change without notice.



Village Suite 03

Floor 2 | 45.25m² – 487.07ft²

Kitchen

2250mm x 2130mm
7'5" x 7'

Sitting Room

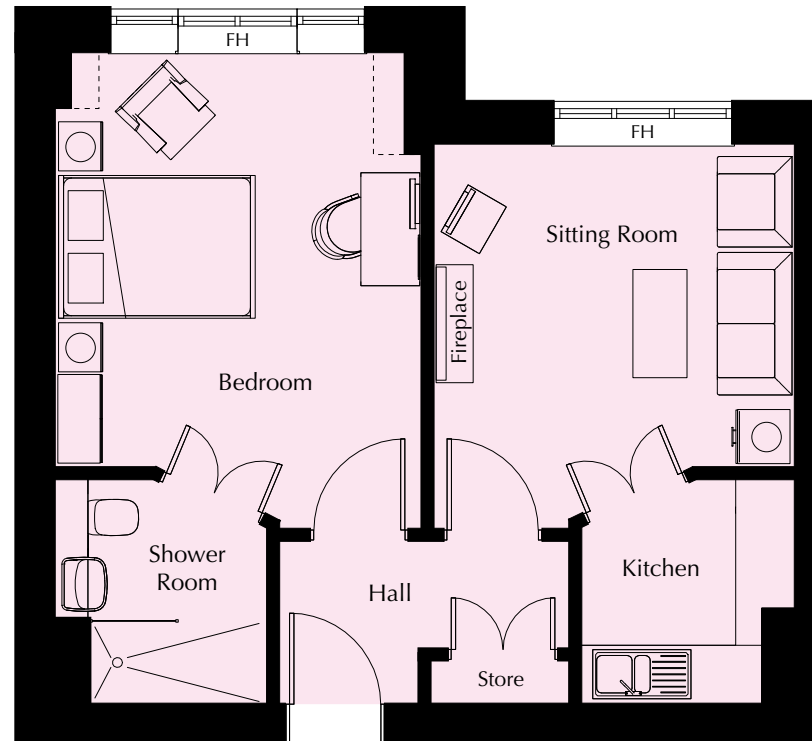
3941mm x 3634mm
12'11" x 11'11"

Bedroom

4881mm x 3702mm
16' x 12'2"

Shower Room

2300mm x 2180mm
7'7" x 7'2"



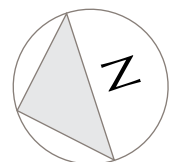
FH – Full height double glazed window.

These particulars are intended to give a fair and substantially correct overall description.

Measurements have been taken at 1500mm ceiling height.

All dimensions are approximate. Room measurements include bay windows if applicable.

Furniture layout is to give an indicative impression and although all efforts have been made to ensure its accuracy at time of print; fixtures, fittings, finishes and specifications are subject to change without notice.



Village Suite 04

Floor 2 | 42.23m² – 454.56ft²

Kitchen

2299mm x 2130mm
7'7" x 7'

Sitting Room

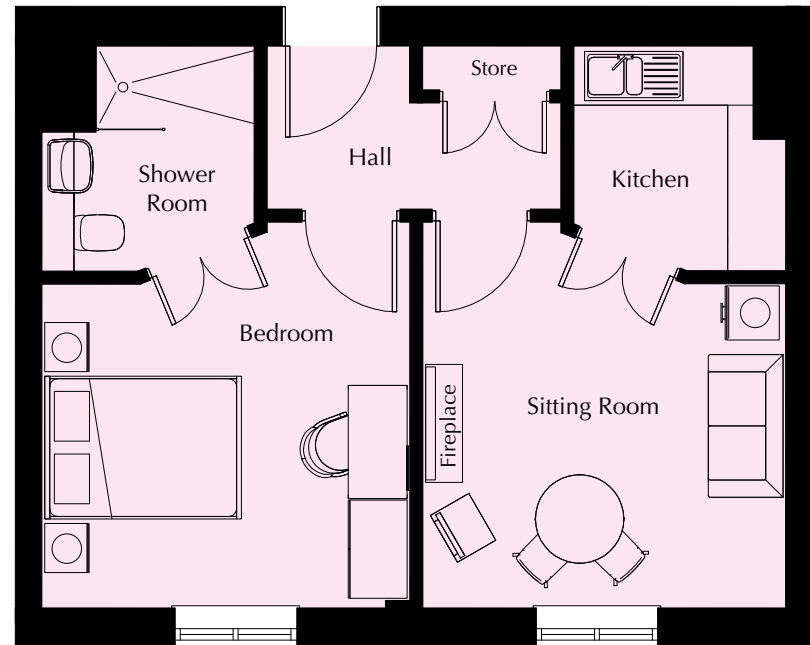
3940mm x 3667mm
12'11" x 12'

Bedroom

3940mm x 3731mm
12'11" x 12'3"

Shower Room

2300mm x 2215mm
7'7" x 7'3"

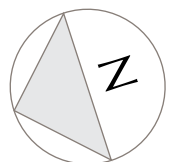


These particulars are intended to give a fair and substantially correct overall description.

Measurements have been taken at 1500mm skirting height.

All dimensions are approximate. Room measurements include bay windows if applicable.

Furniture layout is to give an indicative impression and although all efforts have been made to ensure its accuracy at time of print; fixtures, fittings, finishes and specifications are subject to change without notice.



Village Suite 05

Floor 2 | 67.87m² – 730.55ft²

Kitchen

2300mm x 2180mm
7'7" x 7'2"

Sitting Room

5065mm x 3668mm
16'7" x 12'

Bedroom 1

6143mm x 3661mm
20'2" x 12'

Shower Room 1

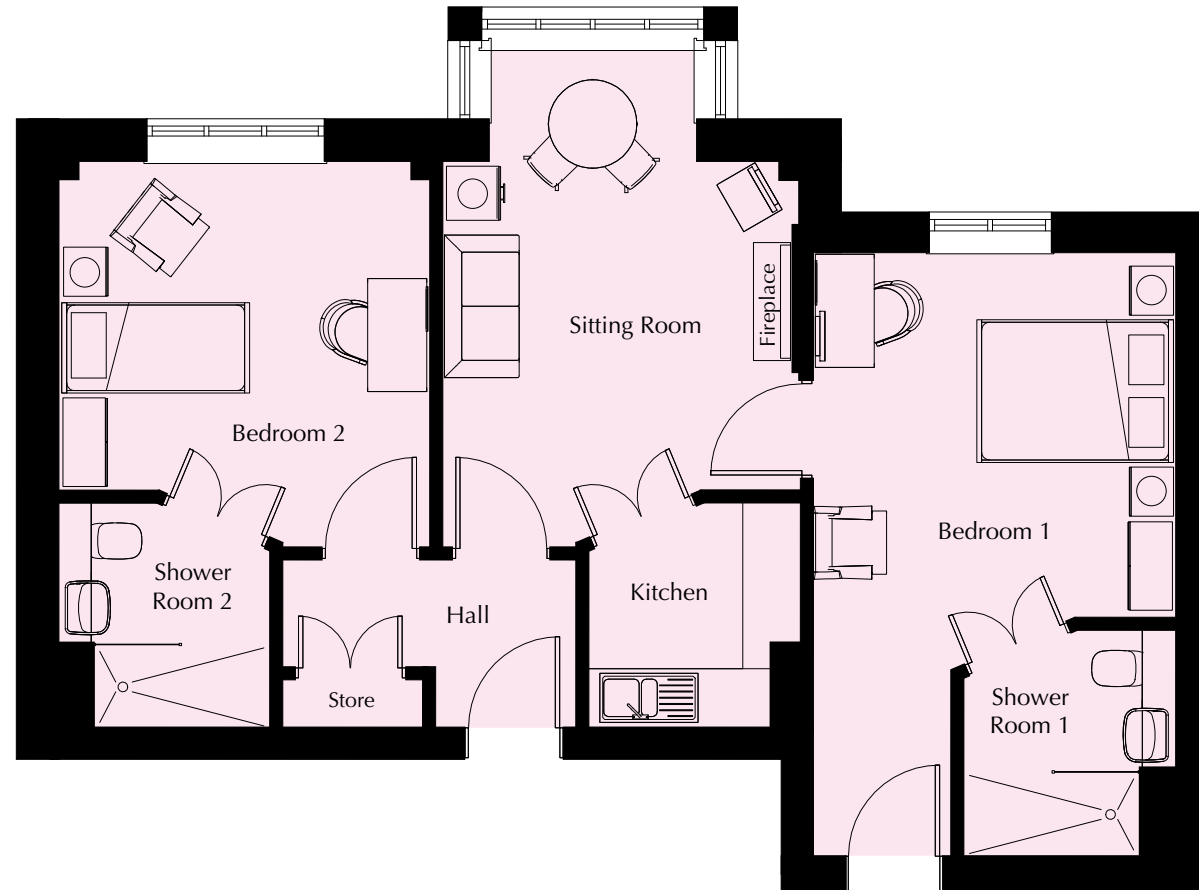
2300mm x 2180mm
7'7" x 7'2"

Bedroom 2

3940mm x 3756mm
12'11" x 12'4"

Shower Room 2

2300mm x 2180mm
7'7" x 7'2"

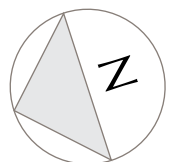


These particulars are intended to give a fair and substantially correct overall description.

Measurements have been taken at 1500mm skeliling height.

All dimensions are approximate. Room measurements include bay windows if applicable.

Furniture layout is to give an indicative impression and although all efforts have been made to ensure its accuracy at time of print; fixtures, fittings, finishes and specifications are subject to change without notice.



Village Suite 06

Floor 2 | 51.19m² – 551.00ft²

Kitchen

2270mm x 2130mm
7'5" x 7'

Sitting Room

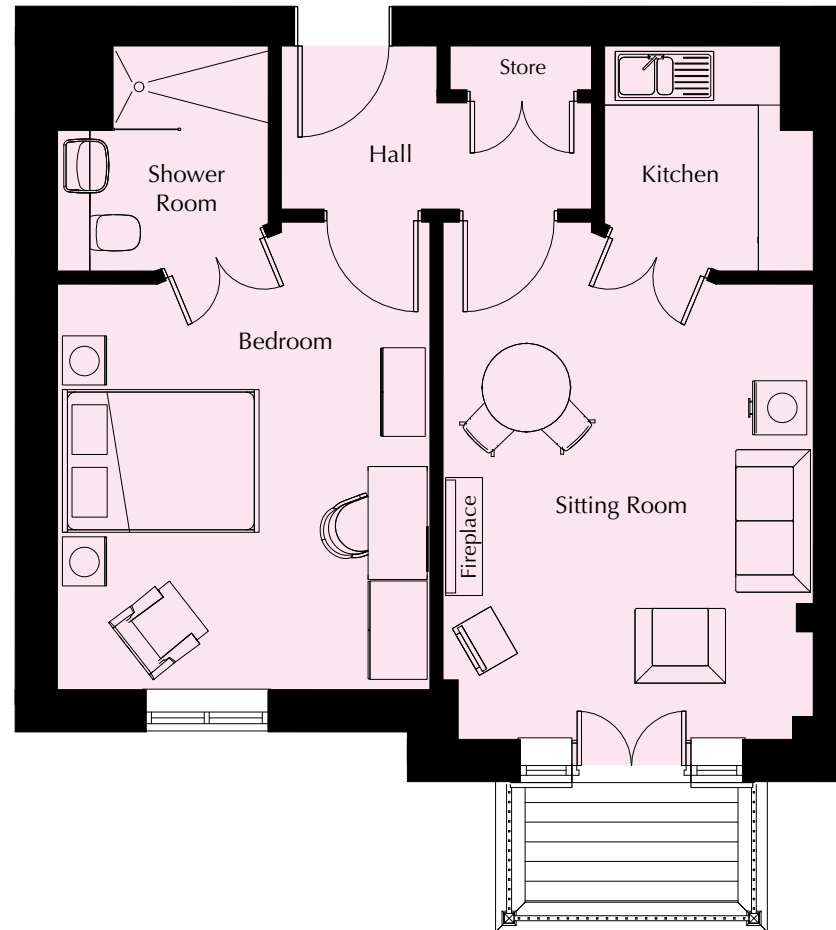
5285mm x 3772mm
17'4" x 12'5"

Bedroom

4790mm x 3776mm
15'9" x 12'5"

Shower Room

2300mm x 2130mm
7'7" x 7'

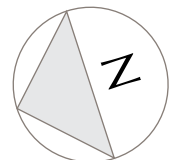


These particulars are intended to give a fair and substantially correct overall description.

Measurements have been taken at 1500mm skeliling height.

All dimensions are approximate. Room measurements include bay windows if applicable.

Furniture layout is to give an indicative impression and although all efforts have been made to ensure its accuracy at time of print; fixtures, fittings, finishes and specifications are subject to change without notice.



Village Suite 07

Floor 2 | 63.63m² – 684.91ft²

Kitchen

2300mm x 2180mm
7'7" x 7'2"

Sitting Room

3940mm x 3723mm
12'11" x 12'3"

Bedroom 1

5713mm x 3682mm
18'9" x 12'1"

Shower Room 1

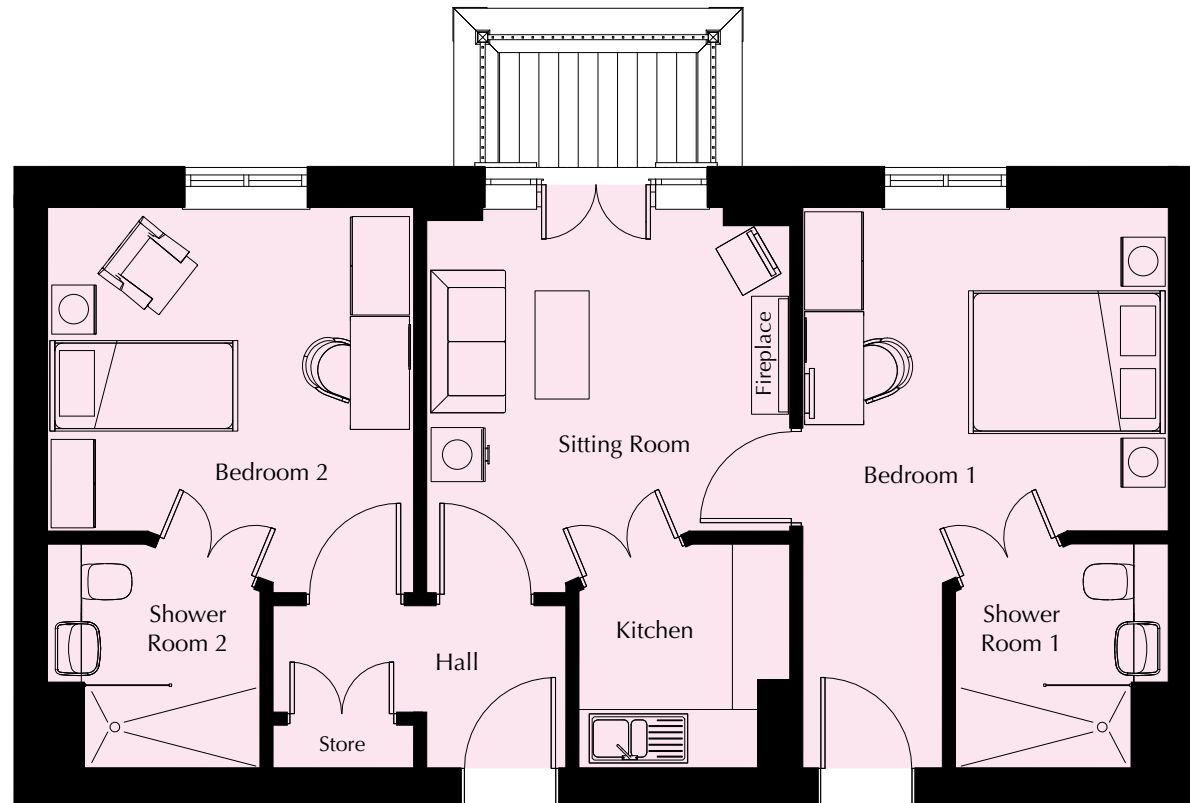
2300mm x 2180mm
7'7" x 7'2"

Bedroom 2

3940mm x 3696mm
12'11" x 12'2"

Shower Room 2

2300mm x 2180mm
7'7" x 7'2"

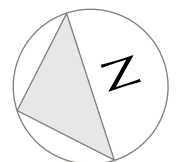


These particulars are intended to give a fair and substantially correct overall description.

Measurements have been taken at 1500mm skelining height.

All dimensions are approximate. Room measurements include bay windows if applicable.

Furniture layout is to give an indicative impression and although all efforts have been made to ensure its accuracy at time of print; fixtures, fittings, finishes and specifications are subject to change without notice.



Village Suite

08

Floor 2 | 75.33m² – 810.85ft²

Kitchen

2300mm x 2180mm
7'7" x 7'2"

Sitting Room

5770mm x 3759mm
18'11" x 12'4"

Bedroom 1

6567mm x 3755mm
21'7" x 12'4"

Shower Room 1

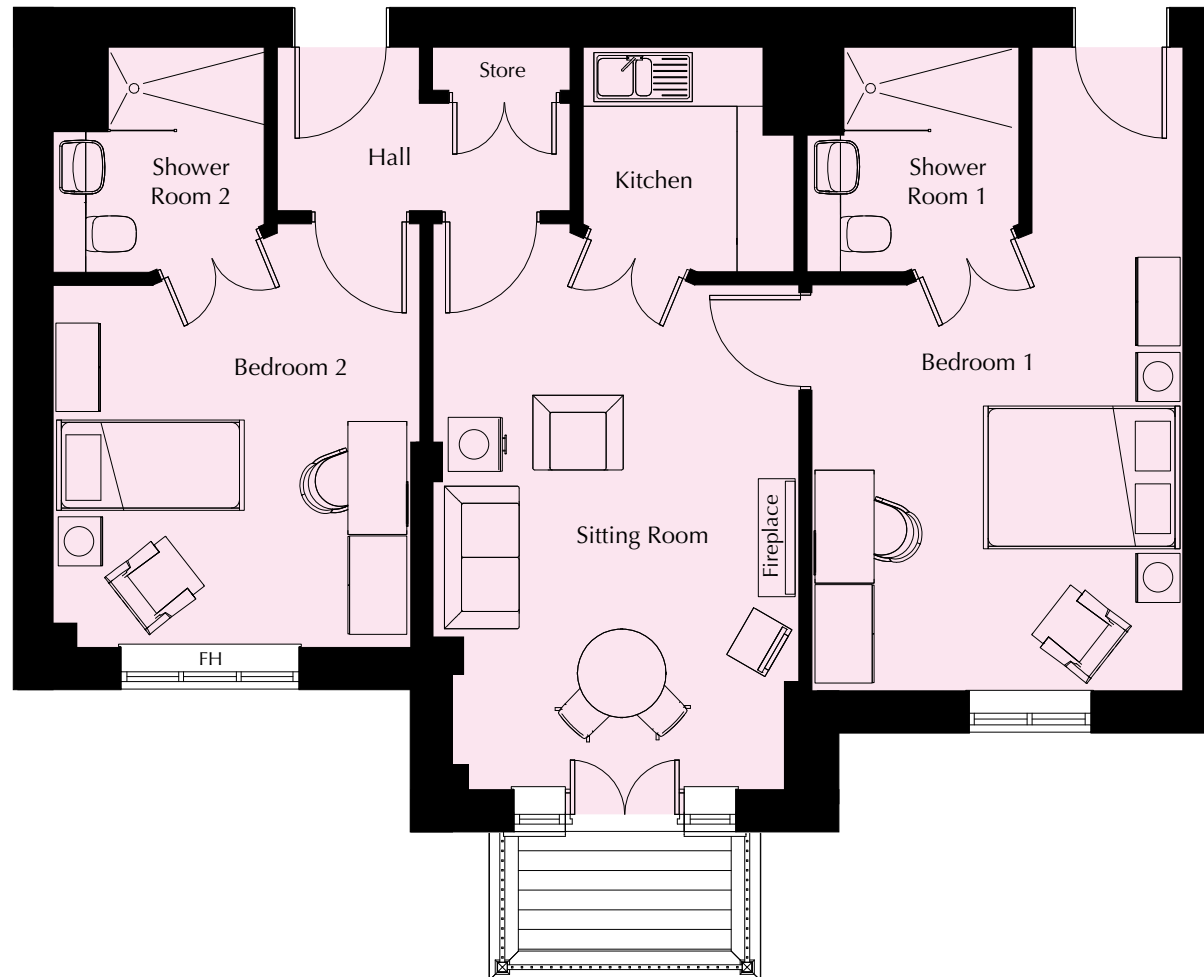
2300mm x 2180mm
7'7" x 7'2"

Bedroom 2

4320mm x 3709mm
14'2" x 12'2"

Shower Room 2

2300mm x 2180mm
7'7" x 7'2"



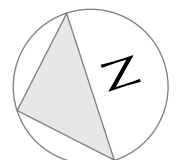
FH – Full height double glazed window.

These particulars are intended to give a fair and substantially correct overall description.

Measurements have been taken at 1500mm skelining height.

All dimensions are approximate. Room measurements include bay windows if applicable.

Furniture layout is to give an indicative impression and although all efforts have been made to ensure its accuracy at time of print; fixtures, fittings, finishes and specifications are subject to change without notice.



Village Suite 09

Floor 2 | 89.75m² – 966.06ft²

Kitchen

2300mm x 2180mm
7'7" x 7'2"

Sitting Room

3833mm x 6837mm
12'7" x 22'5"

Bedroom 1

6219mm x 3777mm
20'5" x 12'5"

Shower Room 1

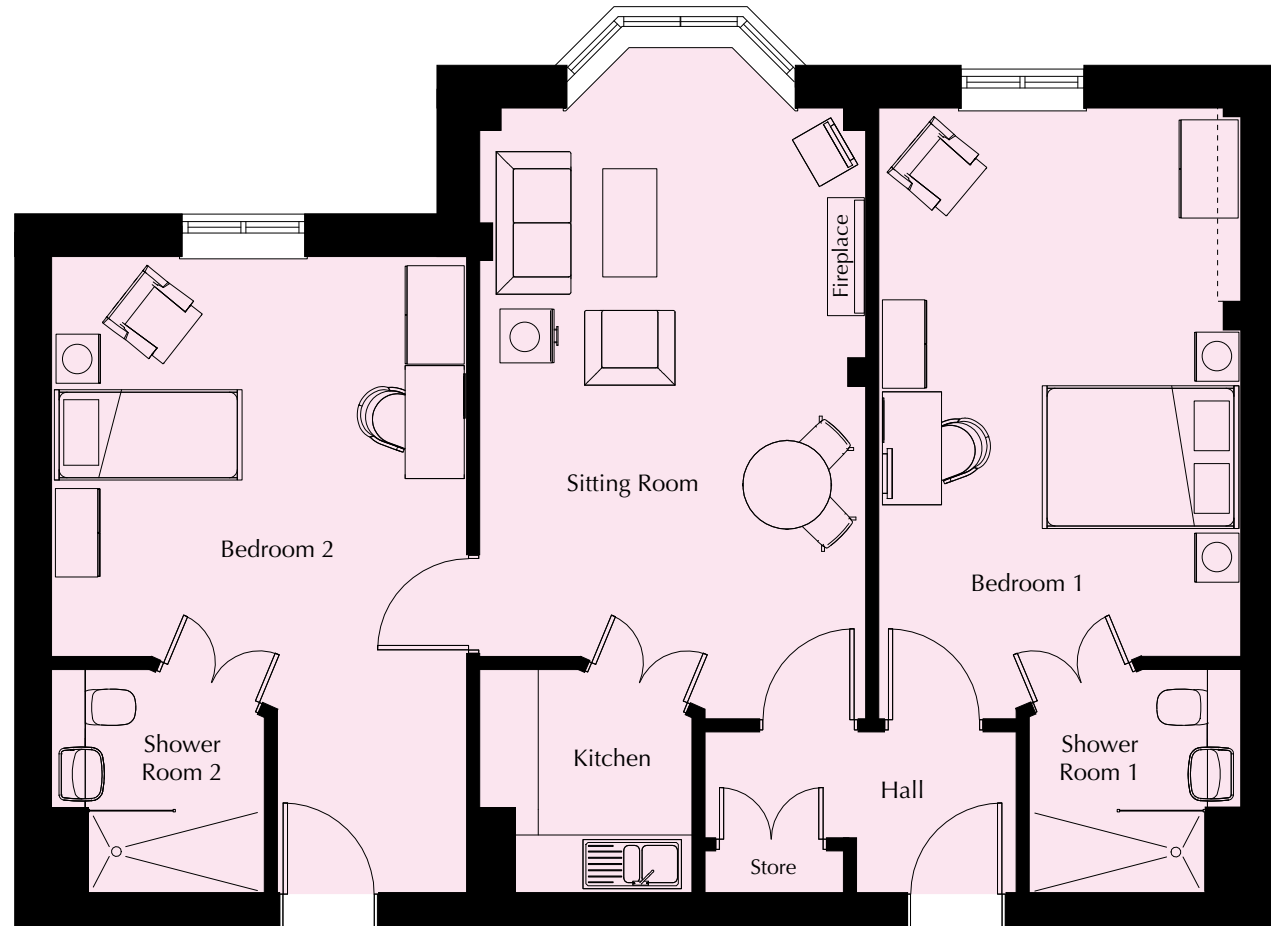
2300mm x 2180mm
7'7" x 7'2"

Bedroom 2

6485mm x 4199mm
21'3" x 13'9"

Shower Room 2

2300mm x 2180mm
7'7" x 7'2"

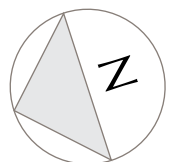


These particulars are intended to give a fair and substantially correct overall description.

Measurements have been taken at 1500mm ceiling height.

All dimensions are approximate. Room measurements include bay windows if applicable.

Furniture layout is to give an indicative impression and although all efforts have been made to ensure its accuracy at time of print; fixtures, fittings, finishes and specifications are subject to change without notice.



Village Suite 10

Floor 2 | 43.39m² – 467.05ft²

Kitchen

2270mm x 2130mm
7'5" x 7'

Sitting Room

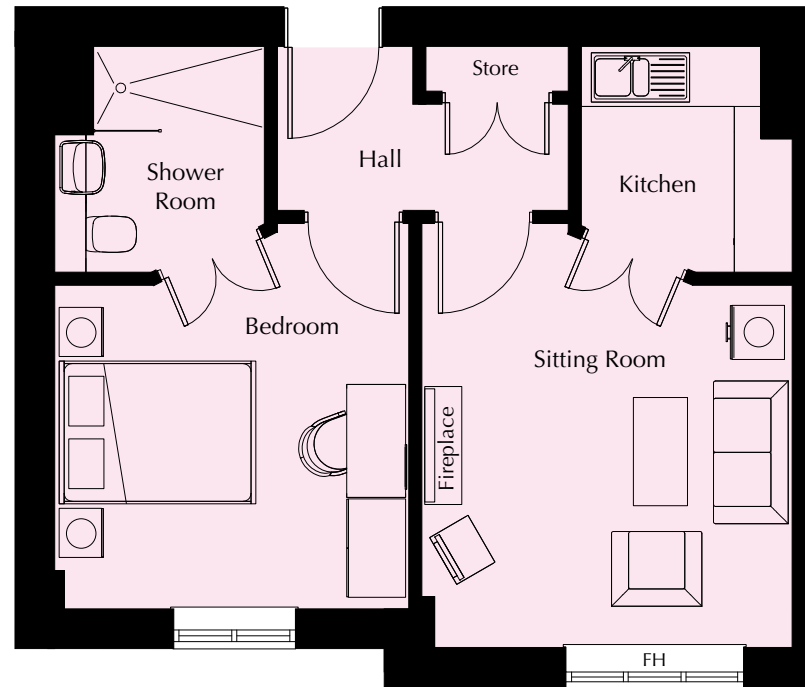
4320mm x 3703mm
14'2" x 12'2"

Bedroom

3940mm x 3690mm
12'11" x 12'1"

Shower Room

2300mm x 2180mm
7'7" x 7'2"



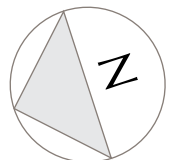
FH – Full height double glazed window.

These particulars are intended to give a fair and substantially correct overall description.

Measurements have been taken at 1500mm ceiling height.

All dimensions are approximate. Room measurements include bay windows if applicable.

Furniture layout is to give an indicative impression and although all efforts have been made to ensure its accuracy at time of print; fixtures, fittings, finishes and specifications are subject to change without notice.



Village Suite

11

Floor 2 | 55.32m² – 595.46ft²

Kitchen

2250mm x 2130mm
7'5" x 7'

Sitting Room

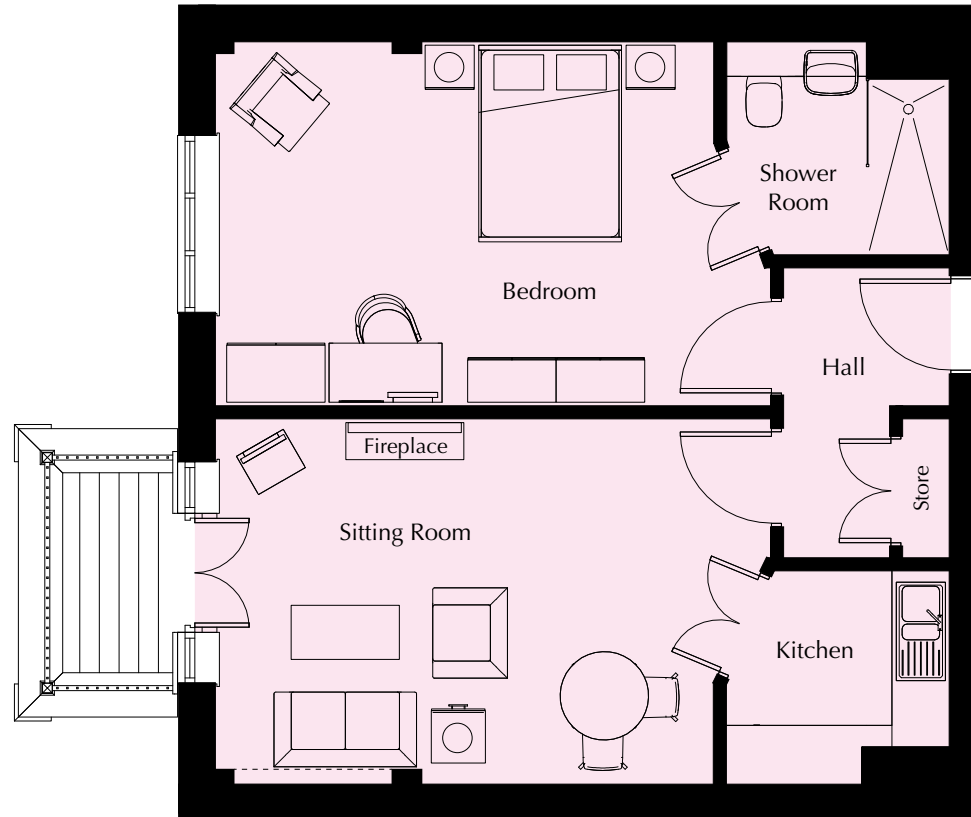
5640mm x 3732mm
18'6" x 12'3"

Bedroom

5640mm x 3666mm
18'6" x 12'

Shower Room

2300mm x 2180mm
7'7" x 7'2"

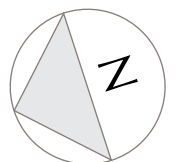


These particulars are intended to give a fair and substantially correct overall description.

Measurements have been taken at 1500mm ceiling height.

All dimensions are approximate. Room measurements include bay windows if applicable.

Furniture layout is to give an indicative impression and although all efforts have been made to ensure its accuracy at time of print; fixtures, fittings, finishes and specifications are subject to change without notice.



Village Suite 12

Floor 2 | 54.36m² – 585.13ft²

Kitchen

3717mm x 2667mm
12'2" x 8'9"

Sitting Room

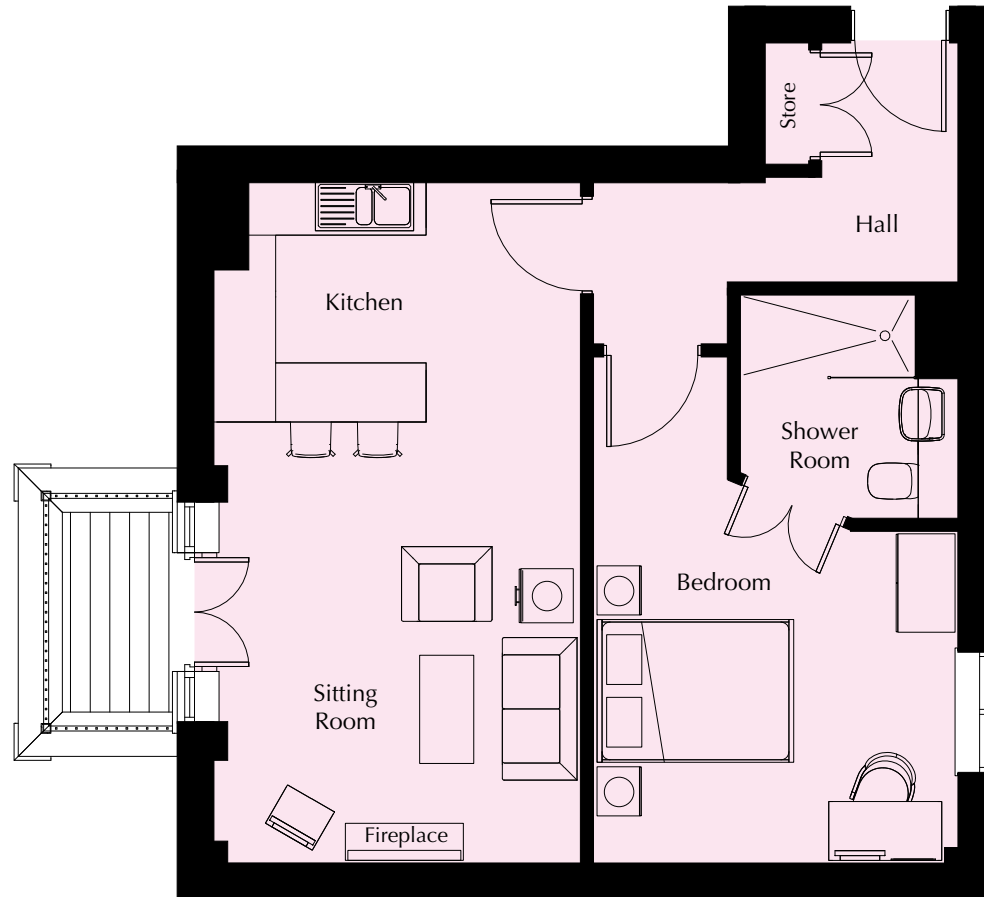
3717mm x 4263mm
12'2" x 14'

Bedroom

5156mm x 3716mm
16'11" x 12'2"

Shower Room

2300mm x 2180mm
7'7" x 7'2"



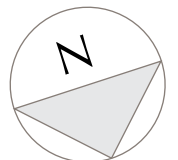
FH – Full height double glazed window.

These particulars are intended to give a fair and substantially correct overall description.

Measurements have been taken at 1500mm ceiling height.

All dimensions are approximate. Room measurements include bay windows if applicable.

Furniture layout is to give an indicative impression and although all efforts have been made to ensure its accuracy at time of print; fixtures, fittings, finishes and specifications are subject to change without notice.



Village Suite 13

Floor 2 | 51.65m² – 555.96ft²

Kitchen

2300mm x 2115mm
7'7" x 6'11"

Sitting Room

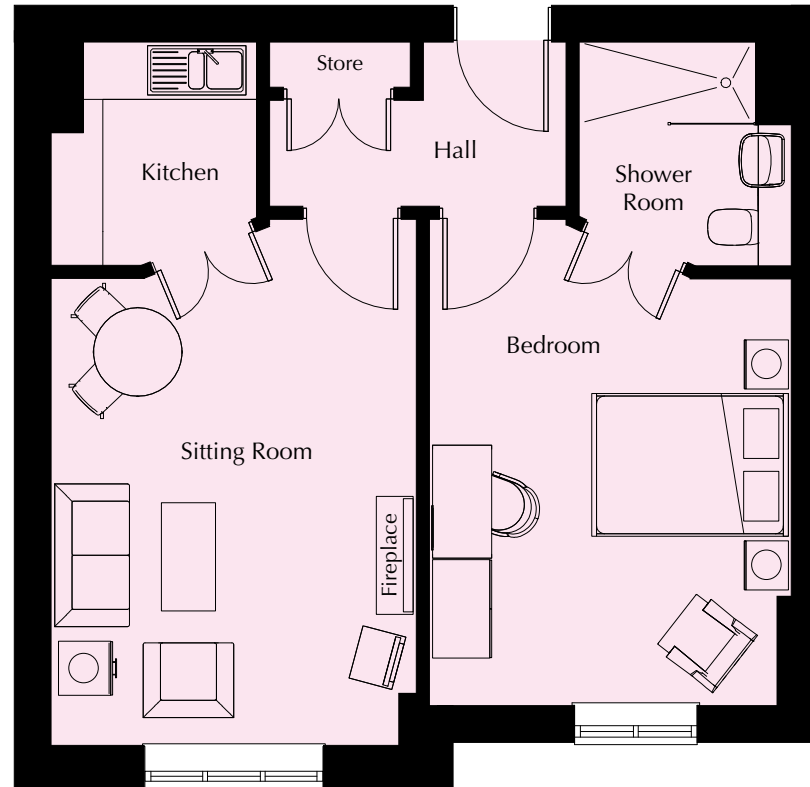
4778mm x 3742mm
15'8" x 12'3"

Bedroom

4952mm x 3657mm
16'3" x 12'

Shower Room

2300mm x 2180mm
7'7" x 7'2"

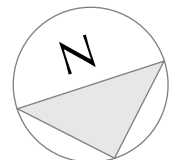


These particulars are intended to give a fair and substantially correct overall description.

Measurements have been taken at 1500mm ceiling height.

All dimensions are approximate. Room measurements include bay windows if applicable.

Furniture layout is to give an indicative impression and although all efforts have been made to ensure its accuracy at time of print; fixtures, fittings, finishes and specifications are subject to change without notice.



Village Suite

14

Floor 2 | 42.37m² – 456.07ft²

Kitchen

2300mm x 2130mm
7'7" x 7'

Sitting Room

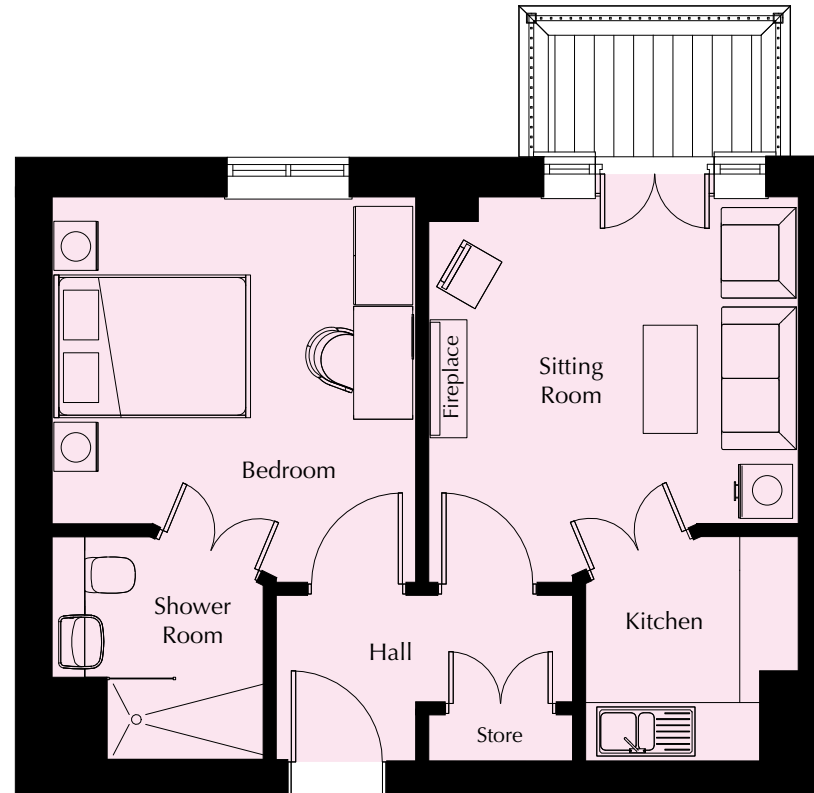
3682mm x 3348mm
12'1" x 11'

Bedroom

3941mm x 3731mm
12'11" x 12'3"

Shower Room

2300mm x 2180mm
7'7" x 7'2"

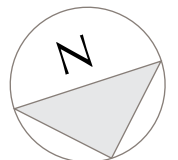


These particulars are intended to give a fair and substantially correct overall description.

Measurements have been taken at 1500mm skieiling height.

All dimensions are approximate. Room measurements include bay windows if applicable.

Furniture layout is to give an indicative impression and although all efforts have been made to ensure its accuracy at time of print; fixtures, fittings, finishes and specifications are subject to change without notice.



Village Suite 15

Floor 2 | 43.07m² – 463.60ft²

Kitchen

2300mm x 2130mm
7'7" x 7'

Sitting Room

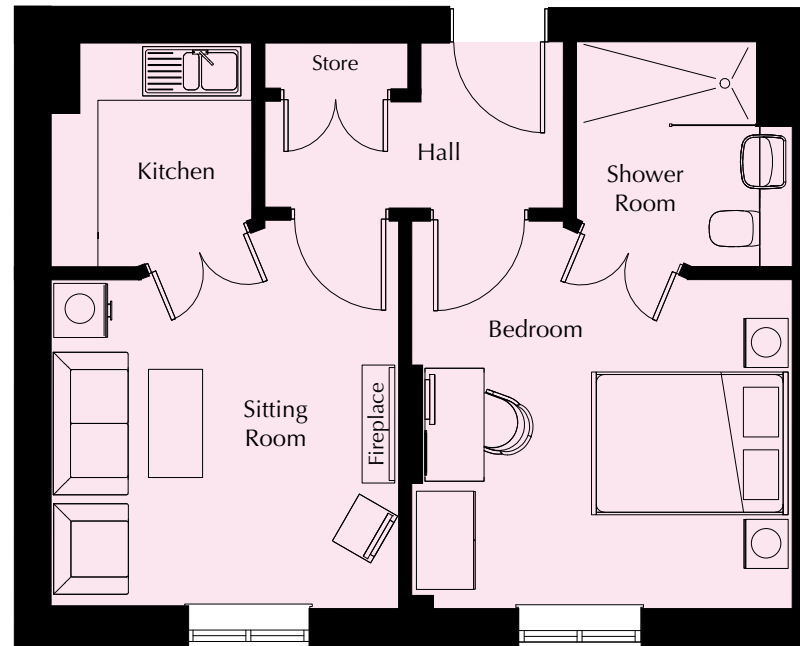
3941mm x 3627mm
12'11" x 11'11"

Bedroom

3941mm x 3856mm
12'11" x 12'8"

Shower Room

2300mm x 2180mm
7'7" x 7'2"

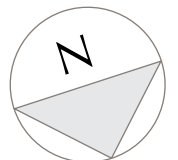


These particulars are intended to give a fair and substantially correct overall description.

Measurements have been taken at 1500mm skirting height.

All dimensions are approximate. Room measurements include bay windows if applicable.

Furniture layout is to give an indicative impression and although all efforts have been made to ensure its accuracy at time of print; fixtures, fittings, finishes and specifications are subject to change without notice.



Village Suite 16

Floor 2 | 45.65m² – 491.37ft²

Kitchen

2300mm x 2130mm
7'7" x 7'

Sitting Room

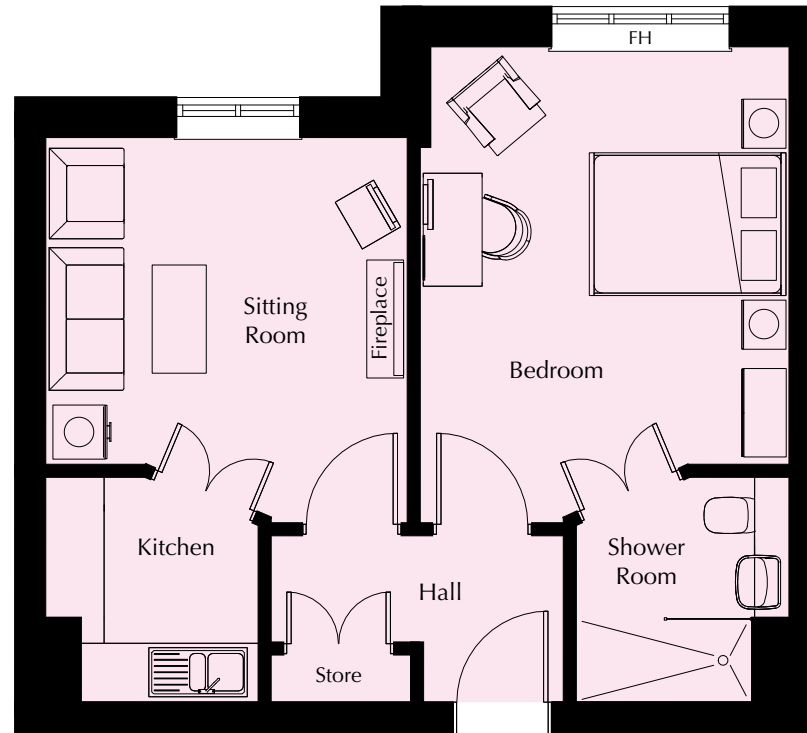
3940mm x 3645mm
12'11" x 12'

Bedroom

4835mm x 3718mm
15'10" x 12'2"

Shower Room

2300mm x 2180mm
7'7" x 7'2"



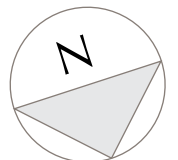
FH – Full height double glazed window.

These particulars are intended to give a fair and substantially correct overall description.

Measurements have been taken at 1500mm ceiling height.

All dimensions are approximate. Room measurements include bay windows if applicable.

Furniture layout is to give an indicative impression and although all efforts have been made to ensure its accuracy at time of print; fixtures, fittings, finishes and specifications are subject to change without notice.



Village Suite 17

Floor 2 | 49.55m² – 533.35ft²

Kitchen

2300mm x 2130mm
7'7" x 7'

Sitting Room

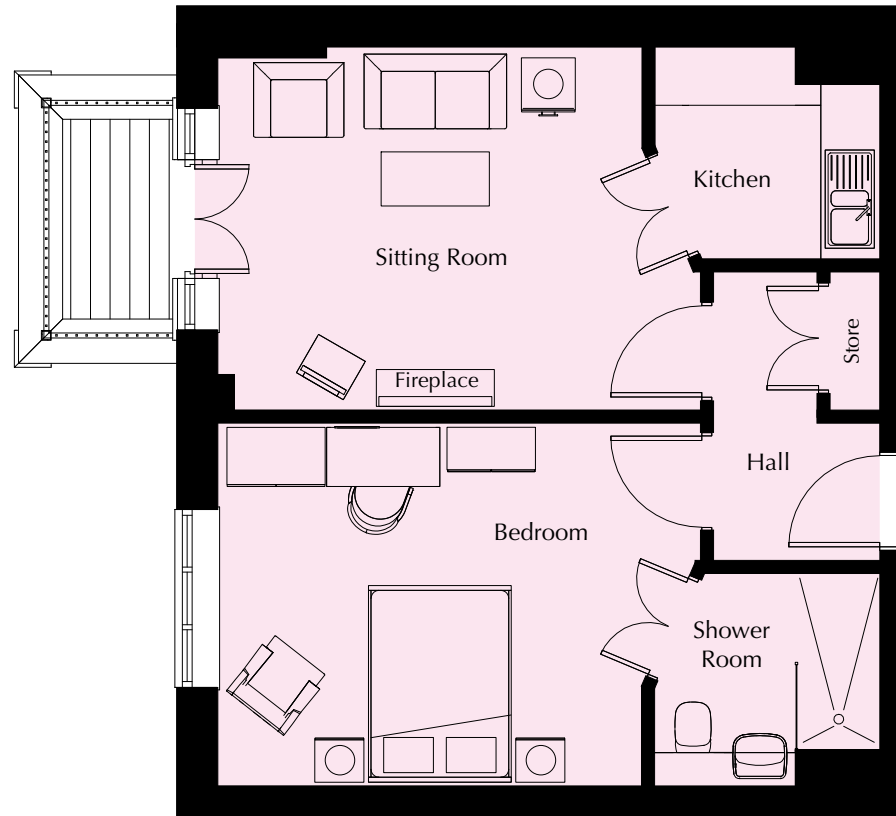
4931mm x 3667mm
16'2" x 12'

Bedroom

4931mm x 3666mm
16'2" x 12'

Shower Room

2300mm x 2180mm
7'7" x 7'2"

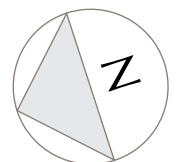


These particulars are intended to give a fair and substantially correct overall description.

Measurements have been taken at 1500mm skeliling height.

All dimensions are approximate. Room measurements include bay windows if applicable.

Furniture layout is to give an indicative impression and although all efforts have been made to ensure its accuracy at time of print; fixtures, fittings, finishes and specifications are subject to change without notice.



Village Suite 18

Floor 2 | 45.65m² – 491.37ft²

Kitchen

2300mm x 2130mm
7'7" x 7'

Sitting Room

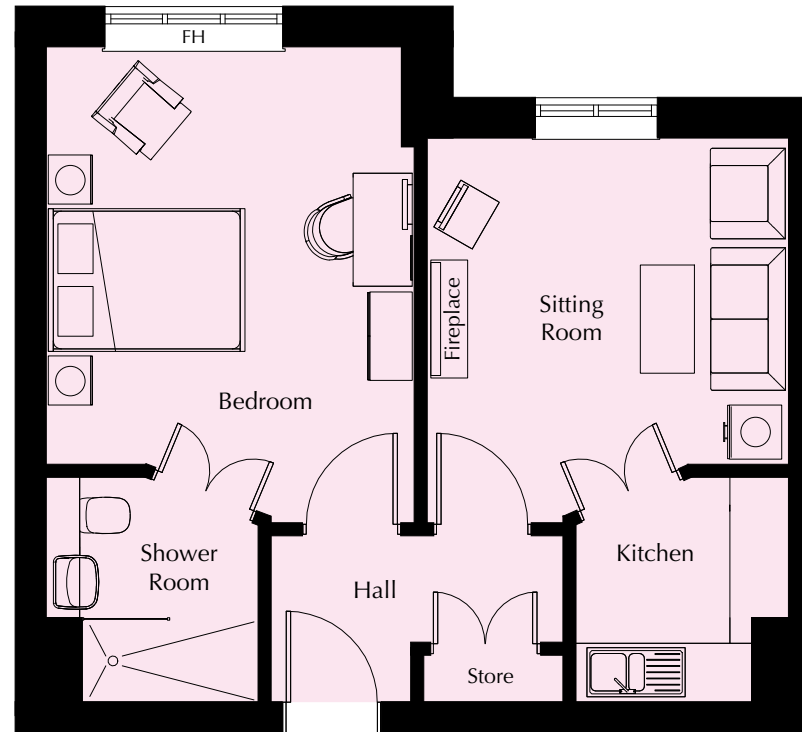
3940mm x 3645mm
12'11" x 12'

Bedroom

4835mm x 3718mm
15'10" x 12'2"

Shower Room

2300mm x 2180mm
7'7" x 7'2"



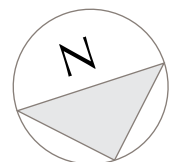
FH – Full height double glazed window.

These particulars are intended to give a fair and substantially correct overall description.

Measurements have been taken at 1500mm ceiling height.

All dimensions are approximate. Room measurements include bay windows if applicable.

Furniture layout is to give an indicative impression and although all efforts have been made to ensure its accuracy at time of print; fixtures, fittings, finishes and specifications are subject to change without notice.



Village Suite 19

Floor 2 | 42.42m² – 456.61ft²

Kitchen

2300mm x 2130mm
7'7" x 7'

Sitting Room

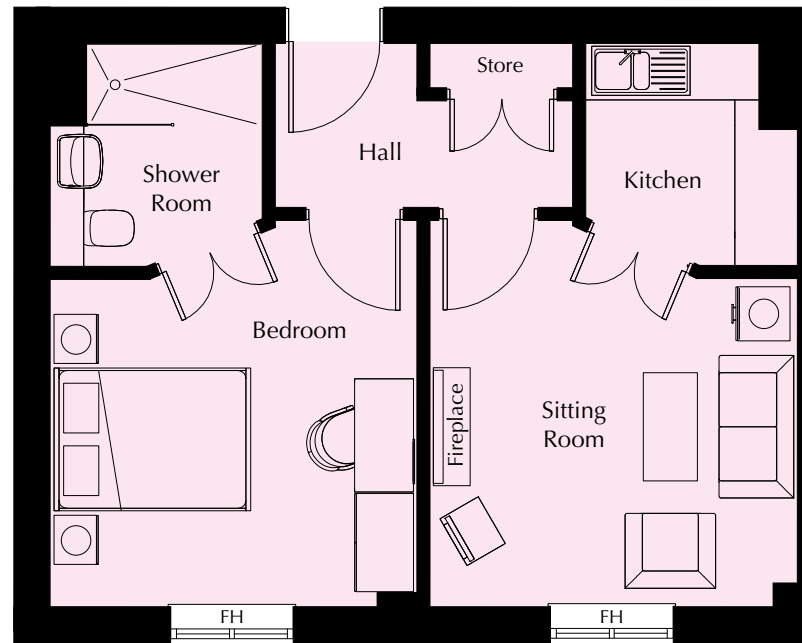
3940mm x 3717mm
12'11" x 12'2"

Bedroom

3940mm x 3665mm
12'11" x 12'

Shower Room

2300mm x 2180mm
7'7" x 7'2"



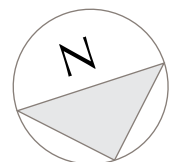
FH – Full height double glazed window.

These particulars are intended to give a fair and substantially correct overall description.

Measurements have been taken at 1500mm ceiling height.

All dimensions are approximate. Room measurements include bay windows if applicable.

Furniture layout is to give an indicative impression and although all efforts have been made to ensure its accuracy at time of print; fixtures, fittings, finishes and specifications are subject to change without notice.



Village Suite 20

Floor 2 | 42.24m² – 454.68ft²

Kitchen

2300mm x 2130mm
7'7" x 7'

Sitting Room

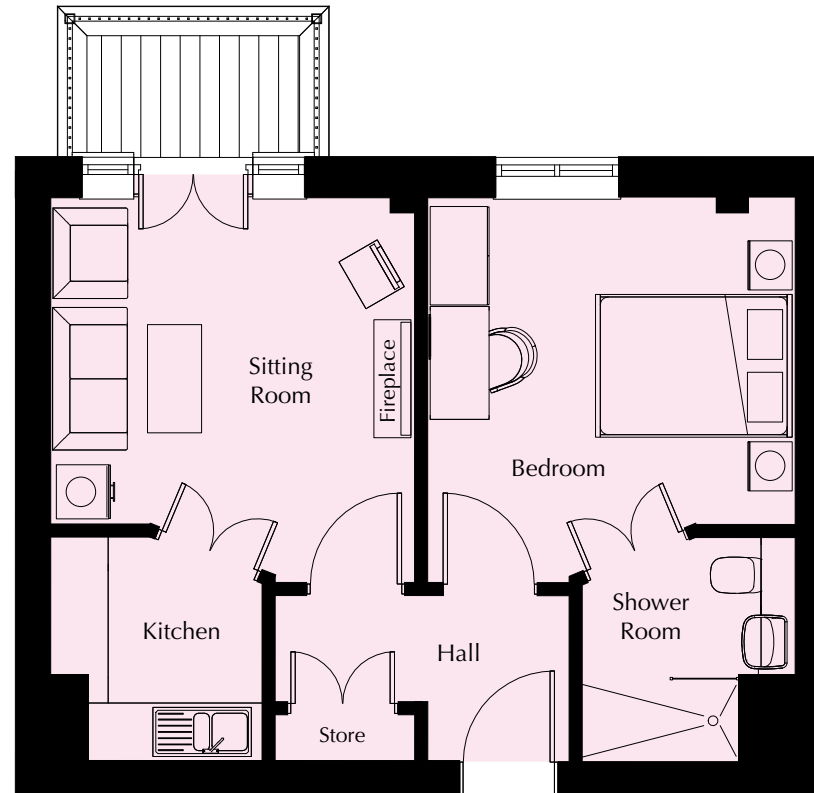
3940mm x 3681mm
12'11" x 12'1"

Bedroom

3940mm x 3682mm
12'11" x 12'1"

Shower Room

2300mm x 2180mm
7'7" x 7'2"

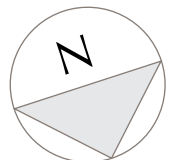


These particulars are intended to give a fair and substantially correct overall description.

Measurements have been taken at 1500mm skeliling height.

All dimensions are approximate. Room measurements include bay windows if applicable.

Furniture layout is to give an indicative impression and although all efforts have been made to ensure its accuracy at time of print; fixtures, fittings, finishes and specifications are subject to change without notice.



Village Suite 21

Floor 2 | 51.21m² – 551.22ft²

Kitchen

2300mm x 2130mm
7'7" x 7'

Sitting Room

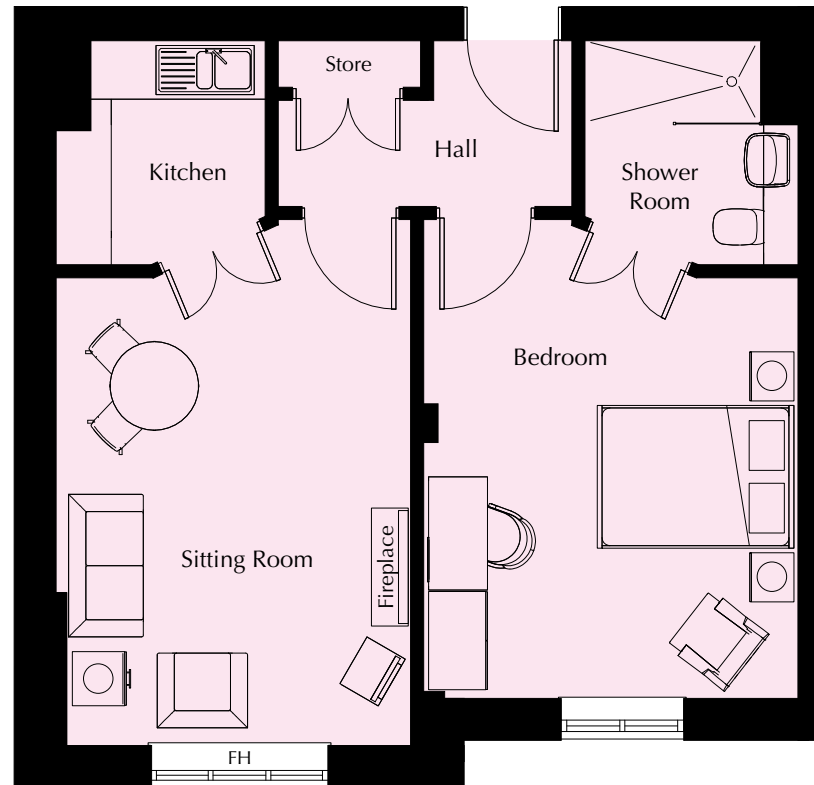
4770mm x 3613mm
15'8" x 11'10"

Bedroom

4898mm x 3758mm
16'1" x 12'4"

Shower Room

2300mm x 2180mm
7'7" x 7'2"



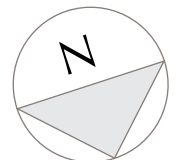
FH – Full height double glazed window.

These particulars are intended to give a fair and substantially correct overall description.

Measurements have been taken at 1500mm ceiling height.

All dimensions are approximate. Room measurements include bay windows if applicable.

Furniture layout is to give an indicative impression and although all efforts have been made to ensure its accuracy at time of print; fixtures, fittings, finishes and specifications are subject to change without notice.



Village Suite 22

Floor 2 | 54.75m² – 589.32ft²

Kitchen

3717mm x 2770mm
12'2" x 9'1"

Sitting Room

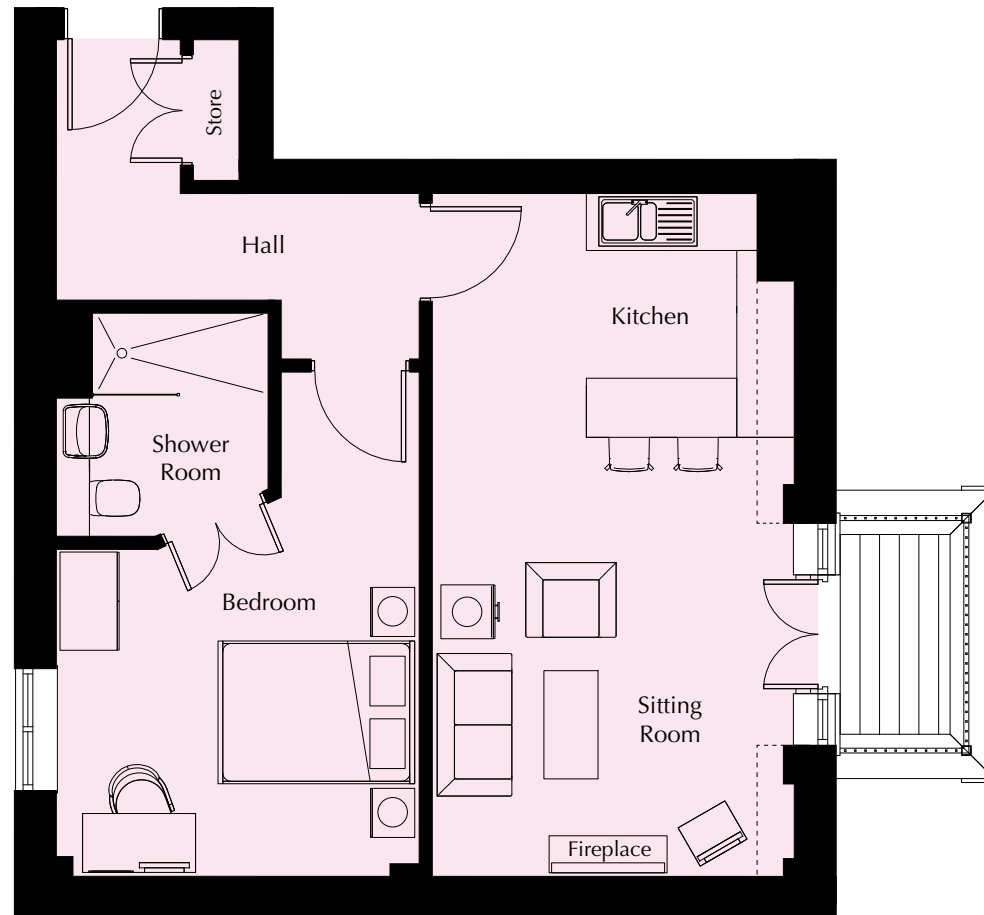
3717mm x 4210mm
12'2" x 13'10"

Bedroom

5155mm x 3717mm
16'11" x 12'2"

Shower Room

2300mm x 2180mm
7'7" x 7'2"

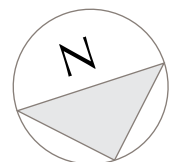


These particulars are intended to give a fair and substantially correct overall description.

Measurements have been taken at 1500mm ceiling height.

All dimensions are approximate. Room measurements include bay windows if applicable.

Furniture layout is to give an indicative impression and although all efforts have been made to ensure its accuracy at time of print; fixtures, fittings, finishes and specifications are subject to change without notice.



Village Suite 23

Floor 2 | 55.95m² – 602.24ft²

Kitchen

2300mm x 2130mm
7'7" x 7'

Sitting Room

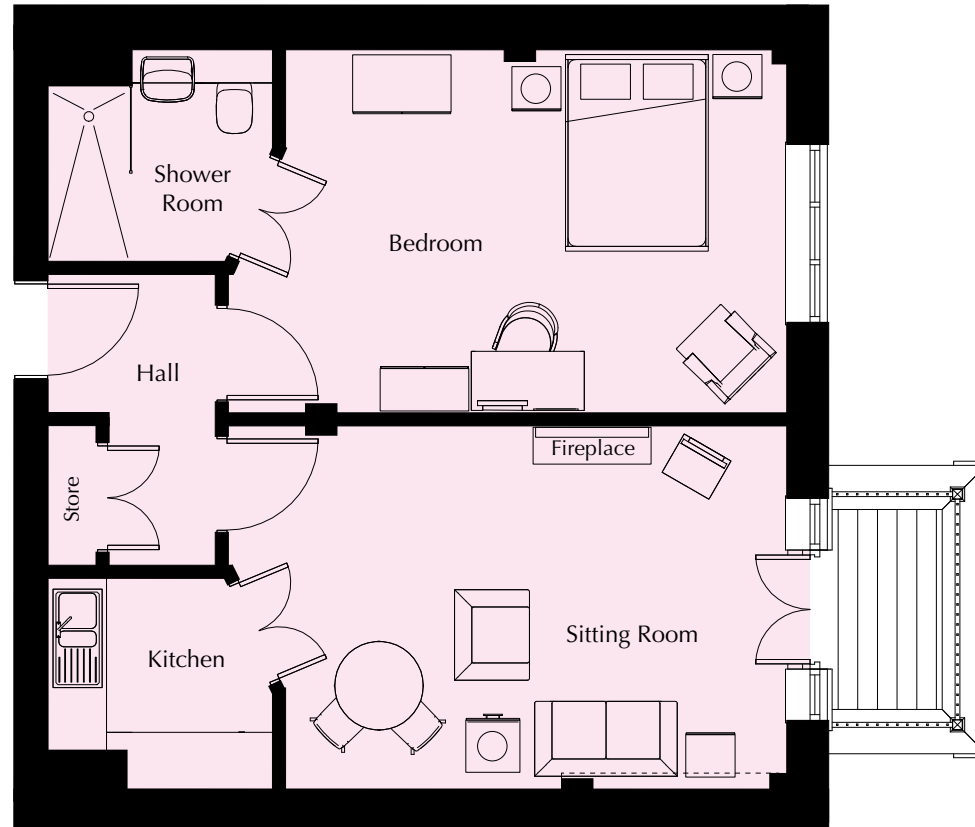
5705mm x 3717mm
18'9" x 12'2"

Bedroom

5705mm x 3720mm
18'9" x 12'2"

Shower Room

2300mm x 2180mm
7'7" x 7'2"

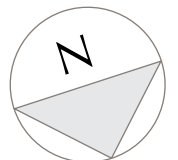


These particulars are intended to give a fair and substantially correct overall description.

Measurements have been taken at 1500mm skeliling height.

All dimensions are approximate. Room measurements include bay windows if applicable.

Furniture layout is to give an indicative impression and although all efforts have been made to ensure its accuracy at time of print; fixtures, fittings, finishes and specifications are subject to change without notice.



Village Suite 24

Floor 2 | 42.32m² – 455.53ft²

Kitchen

2300mm x 2130mm
7'7" x 7'

Sitting Room

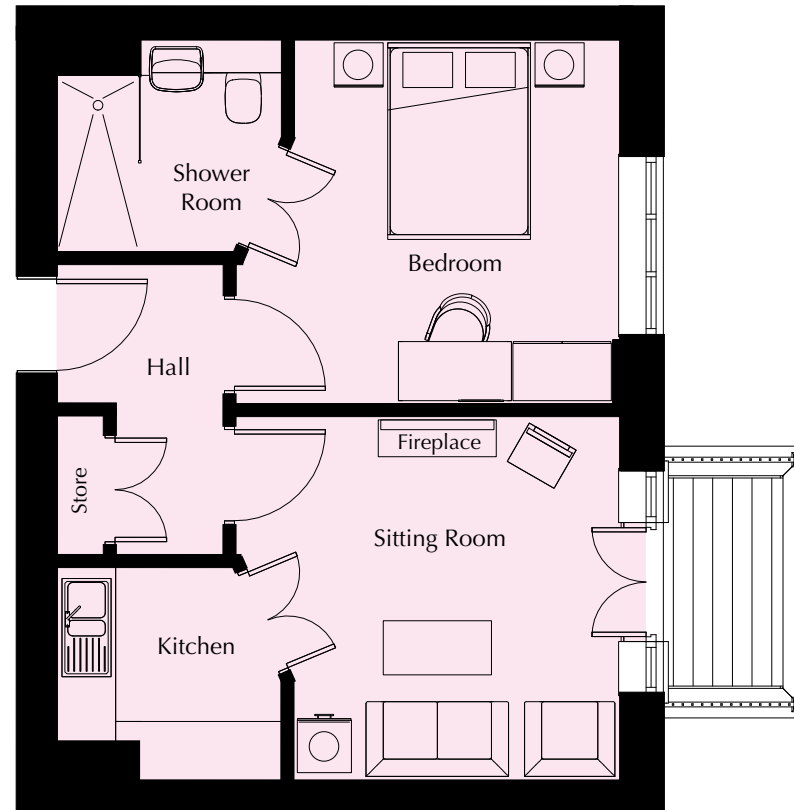
3933mm x 3667mm
12'11" x 12'

Bedroom

3933mm x 3681mm
12'11" x 12'1"

Shower Room

2300mm x 2180mm
7'7" x 7'2"

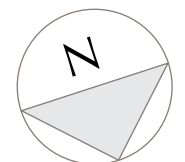


These particulars are intended to give a fair and substantially correct overall description.

Measurements have been taken at 1500mm skirting height.

All dimensions are approximate. Room measurements include bay windows if applicable.

Furniture layout is to give an indicative impression and although all efforts have been made to ensure its accuracy at time of print; fixtures, fittings, finishes and specifications are subject to change without notice.



Village Suite 25

Floor 2 | 45.04m² – 484.81ft²

Kitchen

2300mm x 2130mm
7'7" x 7'

Sitting Room

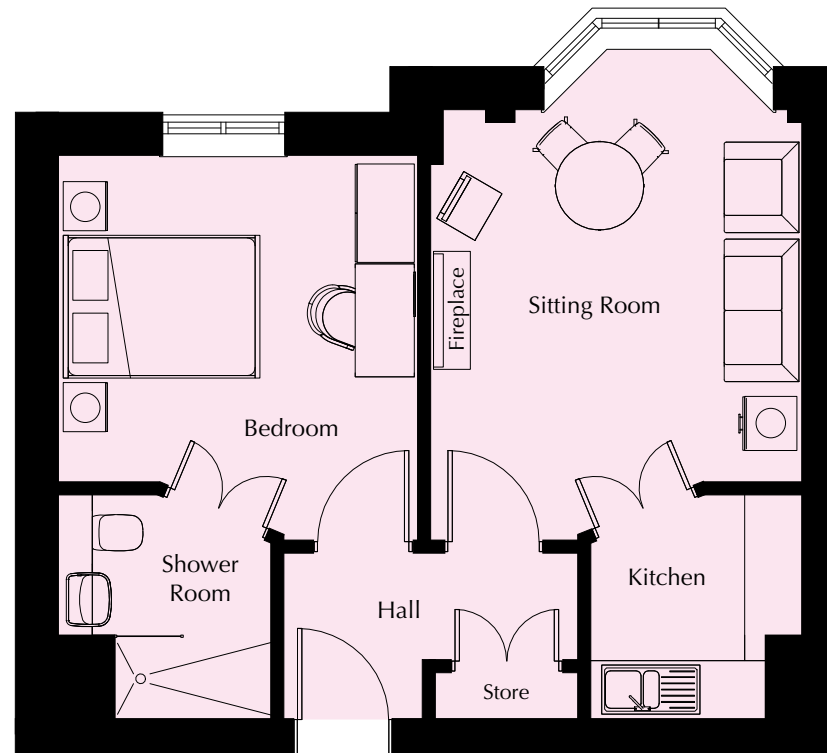
3763mm x 5008mm
12'4" x 16'5"

Bedroom

3941mm x 3619mm
12'11" x 11'10"

Shower Room

2300mm x 2180mm
7'7" x 7'2"

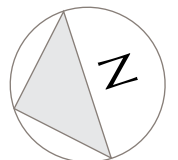


These particulars are intended to give a fair and substantially correct overall description.

Measurements have been taken at 1500mm skelining height.

All dimensions are approximate. Room measurements include bay windows if applicable.

Furniture layout is to give an indicative impression and although all efforts have been made to ensure its accuracy at time of print; fixtures, fittings, finishes and specifications are subject to change without notice.



Village Suite 26

Floor 2 | 50.48m² – 543.36ft²

Kitchen

2300mm x 2130mm
7'7" x 7'

Sitting Room

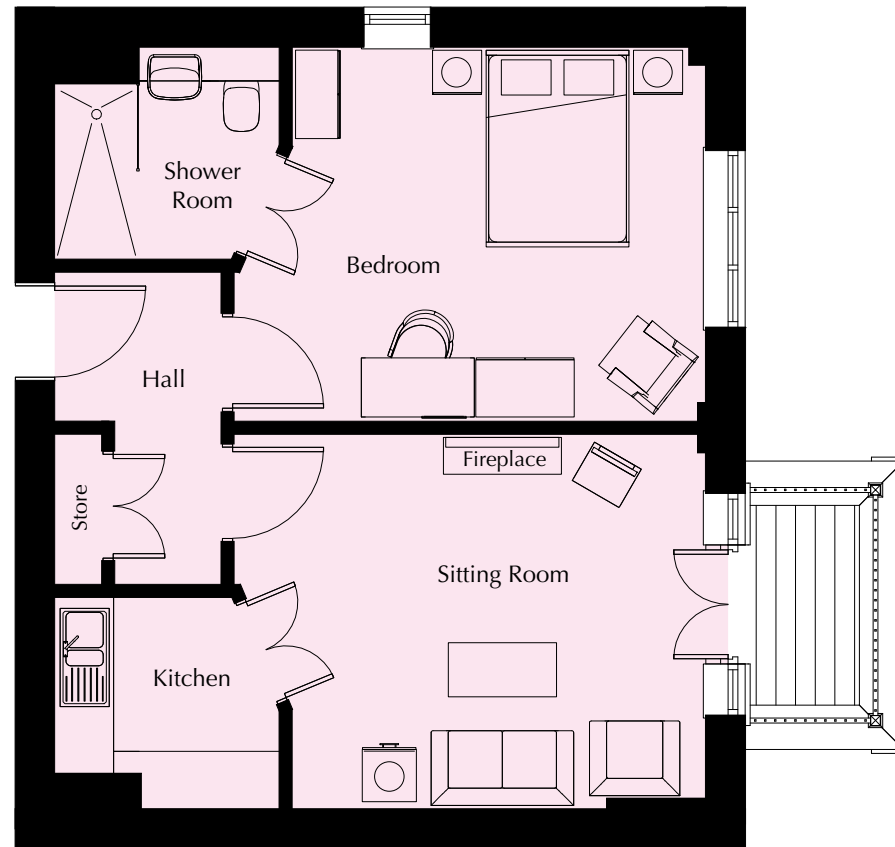
4814mm x 3792mm
15'10" x 12'5"

Bedroom

4814mm x 3827mm
15'10" x 12'7"

Shower Room

2300mm x 2180mm
7'7" x 7'2"

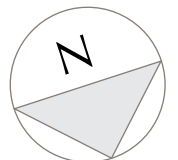


These particulars are intended to give a fair and substantially correct overall description.

Measurements have been taken at 1500mm ceiling height.

All dimensions are approximate. Room measurements include bay windows if applicable.

Furniture layout is to give an indicative impression and although all efforts have been made to ensure its accuracy at time of print; fixtures, fittings, finishes and specifications are subject to change without notice.



Village Suite 27

Floor 2 | 44.20m² – 475.76ft²

Kitchen

2300mm x 2130mm
7'7" x 7'

Sitting Room

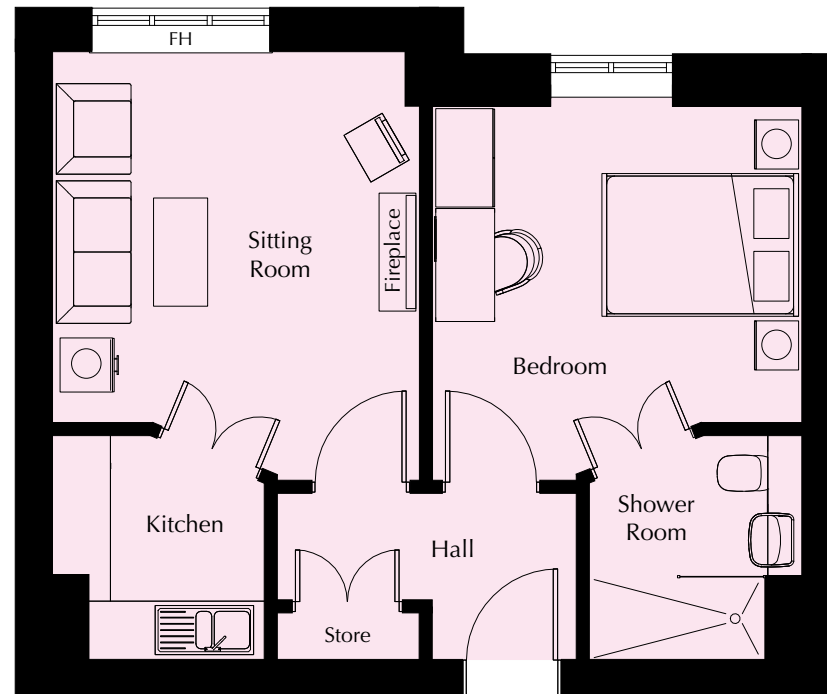
4390mm x 3706mm
14'5" x 12'2"

Bedroom

3848mm x 3726mm
12'7" x 12'3"

Shower Room

2300mm x 2180mm
7'7" x 7'2"



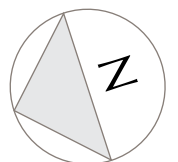
FH – Full height double glazed window.

These particulars are intended to give a fair and substantially correct overall description.

Measurements have been taken at 1500mm ceiling height.

All dimensions are approximate. Room measurements include bay windows if applicable.

Furniture layout is to give an indicative impression and although all efforts have been made to ensure its accuracy at time of print; fixtures, fittings, finishes and specifications are subject to change without notice.



Village Suite 28

Floor 2 | 45.31m² – 487.71ft²

Kitchen

2300mm x 2130mm
7'7" x 7'

Sitting Room

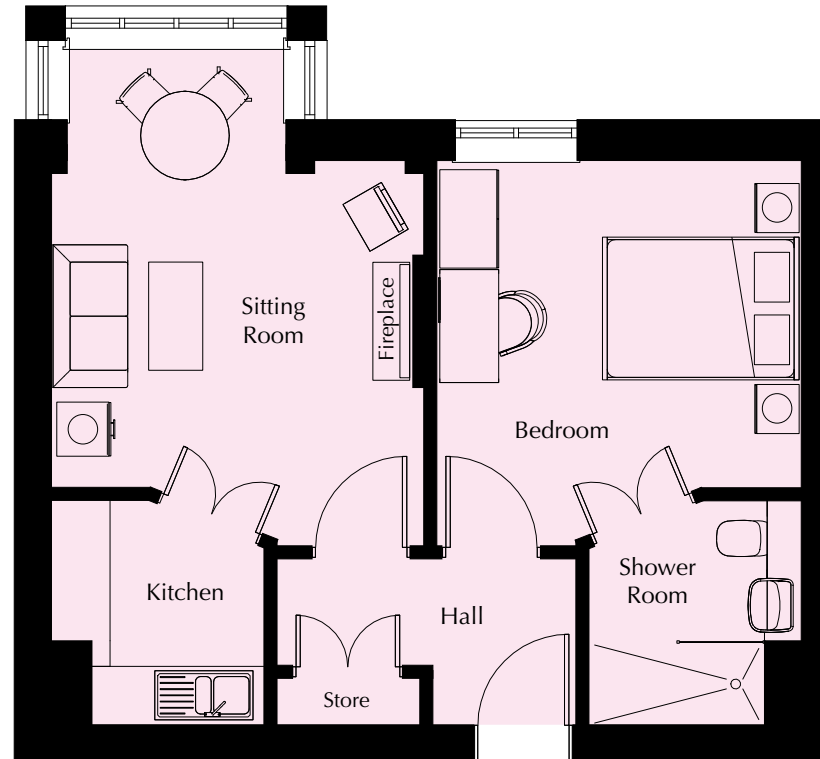
3757mm x 5064mm
12'4" x 16'7"

Bedroom

3941mm x 3676mm
12'11" x 12'1"

Shower Room

2300mm x 2180mm
7'7" x 7'2"

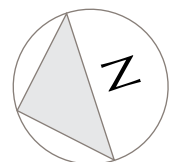


These particulars are intended to give a fair and substantially correct overall description.

Measurements have been taken at 1500mm skelining height.

All dimensions are approximate. Room measurements include bay windows if applicable.

Furniture layout is to give an indicative impression and although all efforts have been made to ensure its accuracy at time of print; fixtures, fittings, finishes and specifications are subject to change without notice.





Wellnesspa at Richmond Witney



A family at Richmond Witney



R I C H M O N D
W O O D N O R T O N

Part of Bupa

TEL: 01386 897399 | RICHMOND-VILLAGES.COM/WOODNORTON |  Find us on Facebook

Richmond Wood Norton, Evesham Road, Wood Norton, Evesham, Worcestershire WR11 4TY

The computer generated images included within this brochure are for illustrative purposes and are intended only as a guide.

September 2017