

# 70 Pavilion Walk – £325,000\*

(Other charges apply)

RICHMOND  
VILLAGES

Part of Bupa

FF

1



1



EPC - C



## 1 bedroom independent living apartment

Richmond Villages are pleased to offer for resale this well presented one bedroom apartment situated in a desirable quiet cul-de-sac within the retirement village, with views of the surrounding countryside and The Ridgeway. The apartment benefits from easy access to the restaurant, bar, reception, art studio, library, wellness spa, outdoor seating areas, bowling green, café and shop.

### Specification

- Spacious L-shaped living room with remote controlled electric fire and Bath stone effect surround, and French doors leading to private balcony.
- Modern fitted kitchen with under cupboard lighting and built in appliances including Neff double oven and ceramic hob, Bosch fridge freezer, washer/dryer and dishwasher.
- Master bedroom with fitted wardrobes and double glazed window
- En-suite shower room with walk-in shower and fully fitted white suite
- Entrance hall with storage cupboard
- Central heating radiators in all rooms
- TV and satellite points\*
- Well stocked flower borders and lawns maintained by the Village Gardeners
- Allocated parking space for one car

\*Satellite subscription not included.

Important Notice: These particulars are intended to give a fair and substantially correct overall description. Other fees and charges apply, please contact the Village Advisers for further details. Properties are sold on a 125 year lease and this property has 114 years remaining.

01235 773970

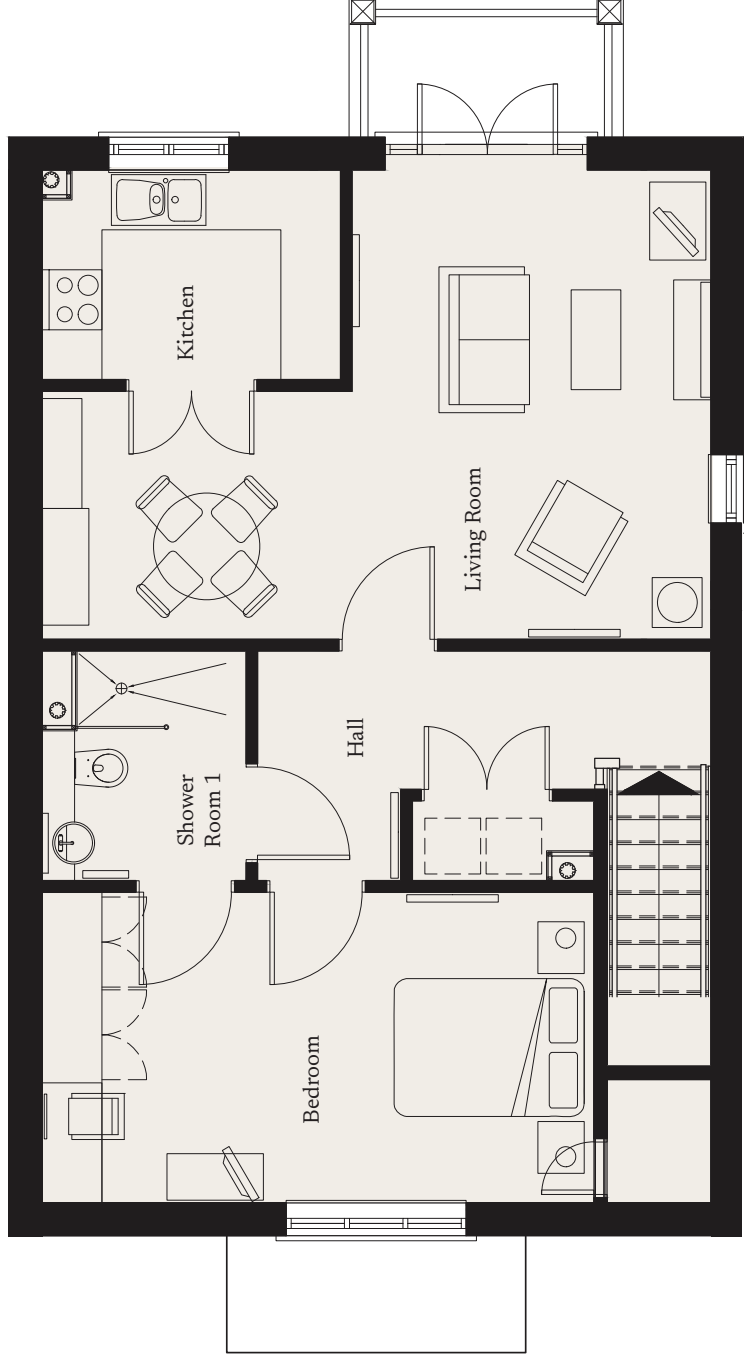
letcomberegis@richmond-villages.com

Richmond Villages Letcombe Regis,  
South Street, Letcombe Regis, Oxfordshire OX12 9RG

# Pavilion Walk 70

First Floor | 741ft<sup>2</sup>

- Kitchen**  
3000mm x 2100mm  
9'10" x 6'11"
- Living Room**  
6723mm x 4700mm  
22'1" x 15'5"
- Bedroom**  
5370mm x 3112mm  
17'7" x 10'3"
- Shower Room**  
2300mm x 2050mm  
7'7" x 6'9"



These particulars are intended to give a fair and substantially correct overall description.

Measurements have been taken at 1500mm ceiling height.

All dimensions are approximate. Bedroom measurements include the wardrobe if applicable. Room measurements include bay windows if applicable.

Furniture layout is to give an indicative impression. Although all efforts have been made to ensure its accuracy at time of print dimensions, fixtures, fittings, finishes and specifications are subject to change without notice.

The properties are sold unfurnished.

