

# 3/3 Village Centre – £435,000

RICHMOND  
VILLAGES

Part of Bupa



1



1



EPC - C



## 1 bedroom assisted living apartment

A rare opportunity to purchase the largest assisted living apartment in Richmond Villages Painswick, with both the living room and bedroom featuring Juliette balconies with stunning views across the meadow. This apartment benefits from easy access to the superb onsite facilities including Wellness Spa, restaurant, café, rooftop terrace, library, shop, auditorium and a range of activities and events.

### Specification

- Dual aspect spacious living/dining room with Juliette balcony
- Stunning views over the wild flower meadow
- Living room features electric fire with Bath Stone effect surround
- Kitchenette features a range of eye and base level storage units with worktops, under cupboard lighting and built-in fridge
- Master bedroom with dual aspect windows including a Juliette balcony and generous walk-in wardrobe
- Ensuite walk-in shower room with white suite, mirror with down lighter. Large built in storage cupboard with glass front doors
- Separate cloakroom
- Double glazing and under floor heating in all rooms
- TV and satellite points\*
- Allocated off road parking space for one car



\*Satellite subscription not included.

Important Notice: These particulars are intended to give a fair and substantially correct overall description. **Other fees and charges apply**, please contact the Village Advisers for further details. Properties are sold on a 125 year lease and this property has 111 years remaining.

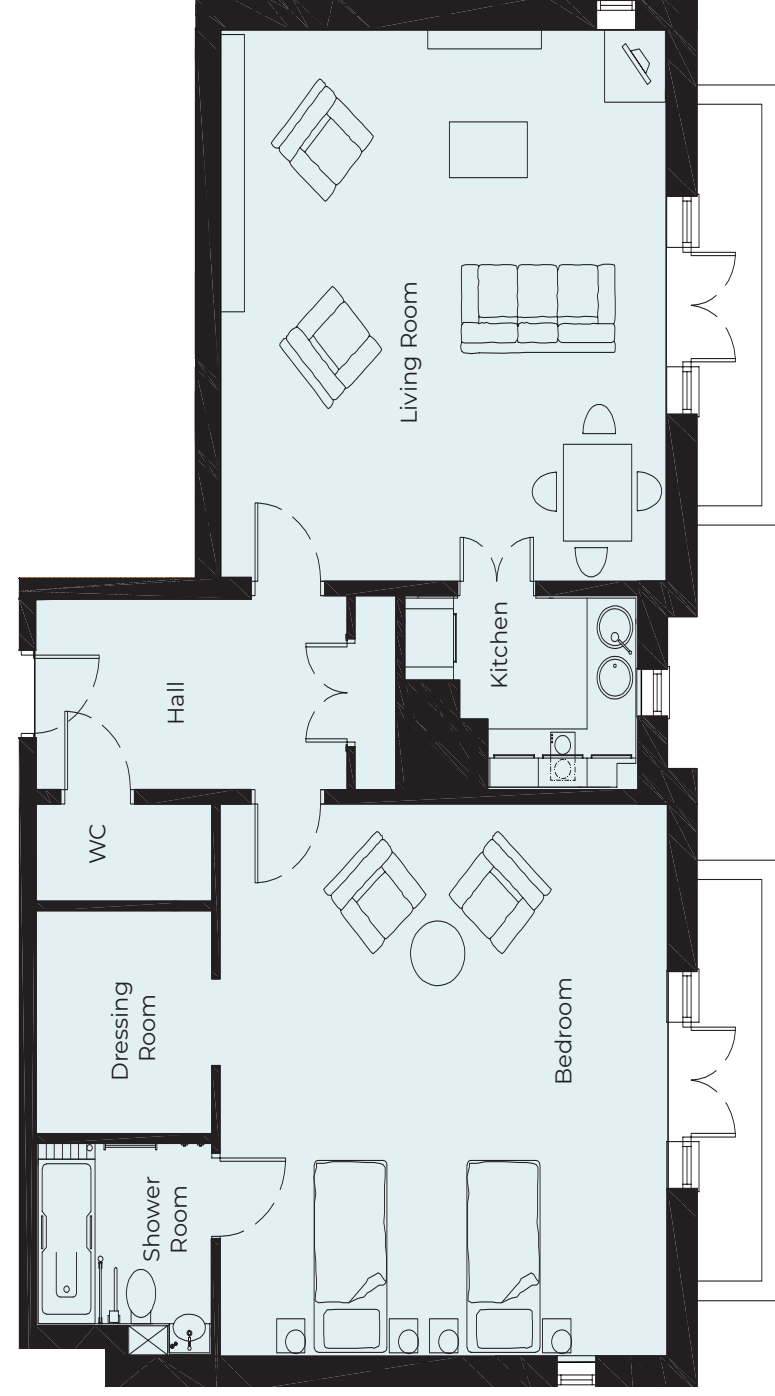
01452 810203

painswick@richmond-villages.com

Richmond Villages Painswick,  
Stroud Road, Painswick, Gloucestershire GL6 6UL

# 3/3 Village Centre

Meadow Level | 93m<sup>2</sup>



- Kitchen**  
2848mm x 1950mm  
9'4" x 6'5"
- Living Room**  
5650mm x 5504mm  
18'6" x 18'
- Bedroom**  
5650mm x 5490mm  
18'6" x 17'11"
- Shower Room**  
2180mm x 2142mm  
7'2" x 7'
- Dressing Room**  
2300mm x 2143mm  
7'6" x 7'
- WC**  
2143mm x 975mm  
7' x 3'2"

These particulars are intended to give a fair and substantially correct overall description.

Measurements have been taken at 1500mm skimming height.

All dimensions are approximate. Bedroom measurements include the wardrobe if applicable. Room measurements include bay windows if applicable.

Furniture layout is to give an indicative impression. Although all efforts have been made to ensure its accuracy at time of print dimensions, fixtures, fittings, finishes and specifications are subject to change without notice.

The properties are sold unfurnished.

