

# Suite 20, £265,000

(Other charges apply)

RICHMOND  
VILLAGES

Part of Bupa

FF

2



2



EPC - C



## 2 bedroom first floor apartment

A spacious first-floor two-bedroom apartment at 962 sqft. The apartment is situated close to the main village center and village facilities. A brand-new home, ready for occupation. This apartment is accessed via stairs and a lift.

### Specification

- A bright and large living room which is East-facing. Feature fireplace.
- Modern fitted kitchen with range of wall and base units and integrated appliances including fridge/freezer, washer/dryer, dishwasher and oven and hob.
- Main bedroom with East facing aspect, overlooking the main lawn.
- Second bedroom with East-facing aspect.
- En-suite shower rooms with large shower area and screen.
- TV and satellite points\*.
- Well stocked flower borders and lawns maintained by the Village Gardeners.
- Allocated parking space for one car.



\*Satellite subscription not included.

Important Notice: These particulars are intended to give a fair and substantially correct overall description. Other fees and charges apply, please contact the Village Advisers for further details. Properties are sold on a 125 year lease and this property has 125 years remaining.

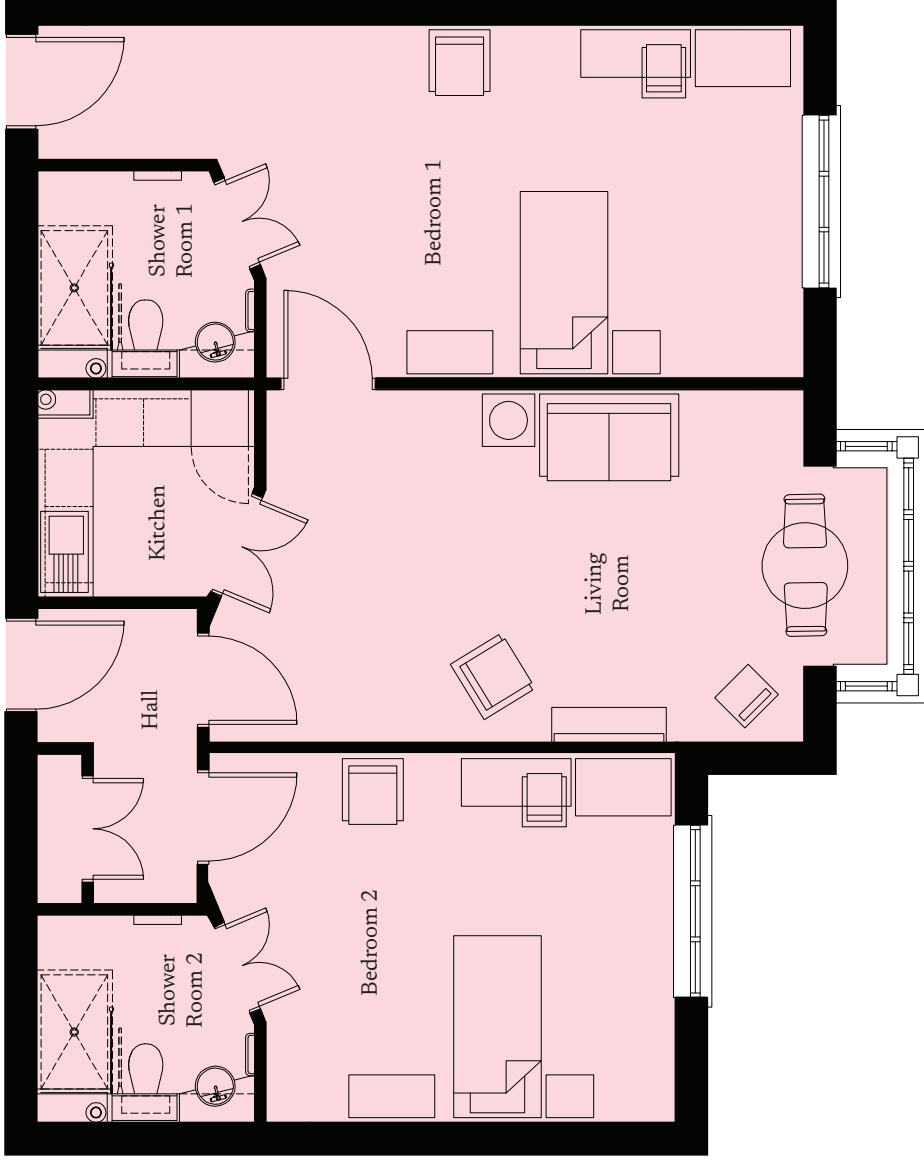
01332 794300

astonontrent@richmond-villages.com

Richmond Villages Aston-on-Trent,  
Richmond Drive, Aston-on-Trent, Derbyshire DE72 2EA

# 20 Village Centre

First Floor | 89.34m<sup>2</sup> – 962ft<sup>2</sup>



Kitchen	2300mm x 2180mm
7'7" x 7'2"	
Living Room	6517mm x 3710mm
21'5" x 21'2"	
Bedroom 1	5557mm x 3710mm
18'3" x 12'2"	
Shower Room 1	2300mm x 2180mm
7'7" x 7'2"	
Bedroom 2	4300mm x 3867mm
14'1" x 12'8"	
Shower Room 2	2300mm x 2180mm
7'7" x 7'2"	

These particulars are intended to give a fair and substantially correct overall description. Measurements have been taken at 1500mm ceiling height.

All dimensions are approximate. Bedroom measurements include the wardrobe if applicable. Room measurements include bay windows if applicable. Furniture layout is to give an indicative impression. Although all efforts have been made to ensure its accuracy at time of print dimensions, fixtures, fittings, finishes and specifications are subject to change without notice.

The properties are sold unfurnished.

