

20 Rowan Gardens – £397,500

(Other charges apply)

RICHMOND
VILLAGES

Part of Bupa



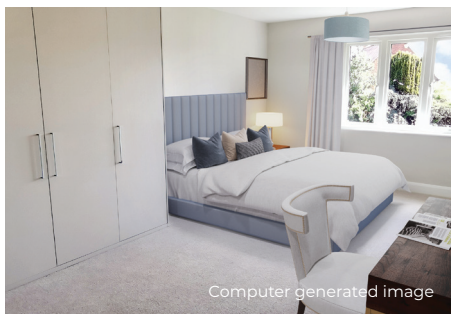
2



2



EPC - C



Computer generated image

2 bedroom independent living apartment

A spacious first-floor two bedroom apartment. At 1187 sqft (110.3 sqm), the accommodation comprises entrance hall, a large open-plan modern kitchen/diner living room, master bedroom with en suite wet room, a second double bedroom and a family bathroom with bath. The apartment is situated close to the main village centre and village facilities. A brand-new home, ready for occupation. This apartment is accessed via stairs.

Specification

- Open plan kitchen and living room with fully fitted kitchen with high quality units and work surfaces throughout, ergonomically designed with pull down baskets. Stainless steel sink unit with mixer taps and integrated AEG appliances which include; fridge freezer, fan oven, microwave, electric hob, and dishwasher, plus a Capel wine cooler. Bright living/dining room with French doors leading to a balcony. Modern remote-controlled electric fire and surround.
- Spacious master bedroom with fitted wardrobes.
- En-suite shower room with walk-in shower and fully fitted white suite.
- Second double bedroom
- Bathroom with bath with overhead shower and fully fitted white suite.
- Entrance hall with utility cupboard with AEG washing machine and AEG tumble dryer.
- Central heating radiators in all rooms. TV and satellite points*.
- Well stocked flower borders and lawns maintained by the Village Gardeners.
- Allocated parking space for one car.

*Satellite subscription not included.

Important Notice: These particulars are intended to give a fair and substantially correct overall description. **Other fees and charges apply**, please contact the Village Advisers for further details. Properties are sold on a 125 year lease and this property has 121 years remaining.



01332 794300

astonontrent@richmond-villages.com

Richmond Villages Aston-on-Trent,
Richmond Drive, Aston-on-Trent, Derbyshire DE72 2EA

20 Rowan Gardens

First Floor | 110.3m² – 1187ft²

Kitchen / Living Room

7542mm x 6428mm
24'9" x 21'1"

Bedroom 1

5396mm x 3536mm
17'8" x 11'7"

Shower Room

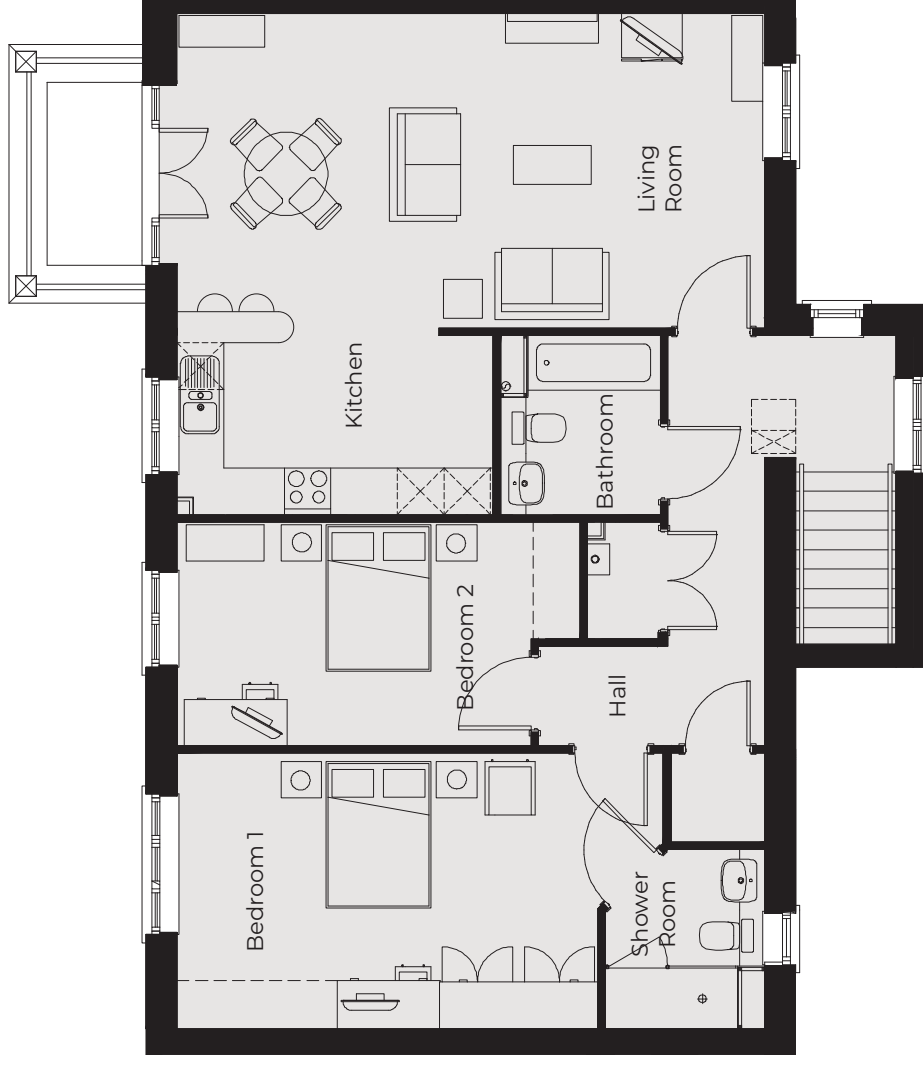
2300mm x 2050mm
7'7" x 6'9"

Bedroom 2

4575mm x 2869mm
15'1" x 9'5"

Bathroom

2299mm x 2050mm
7'7" x 6'9"



These particulars are intended to give a fair and substantially correct overall description. Measurements have been taken at 1500mm skirting height.

All dimensions are approximate. Bedroom measurements include the wardrobe if applicable. Room measurements include bay windows if applicable.

Furniture layout is to give an indicative impression. Although all efforts have been made to ensure its accuracy at time of print dimensions, fixtures, fittings, finishes and specifications are subject to change without notice.

The properties are sold unfurnished.

