

Apartment 27, £395,000

RICHMOND
VILLAGES

Part of Bupa

(Other charges apply)



2



2



EPC - B



2 bedroom first floor apartment

A spacious first-floor two-bedroom apartment at 1164 sqft. The apartment is situated close to the main village center and village facilities. A brand-new home, ready for occupation. This apartment is accessed via stairs.

Specification

- A bright and large living room with French doors leading to a northeast-facing balcony. Feature fireplace.
- Modern fitted kitchen with range of wall and base units and integrated appliances including fridge/freezer, washer/dryer, dishwasher and oven and hob.
- Master bedroom with South-East facing aspect.
- Second bedroom with North-West facing window.
- En-suite shower room with large shower area and screen.
- Bathroom with low level bath with overhead shower and screen.
- TV and satellite points*.
- Well stocked flower borders and lawns maintained by the Village Gardeners.
- Allocated parking space for one car.

*Satellite subscription not included.

Important Notice: These particulars are intended to give a fair and substantially correct overall description. **Other fees and charges apply**, please contact the Village Advisers for further details. Properties are sold on a 125 year lease and this property has 121 years remaining.

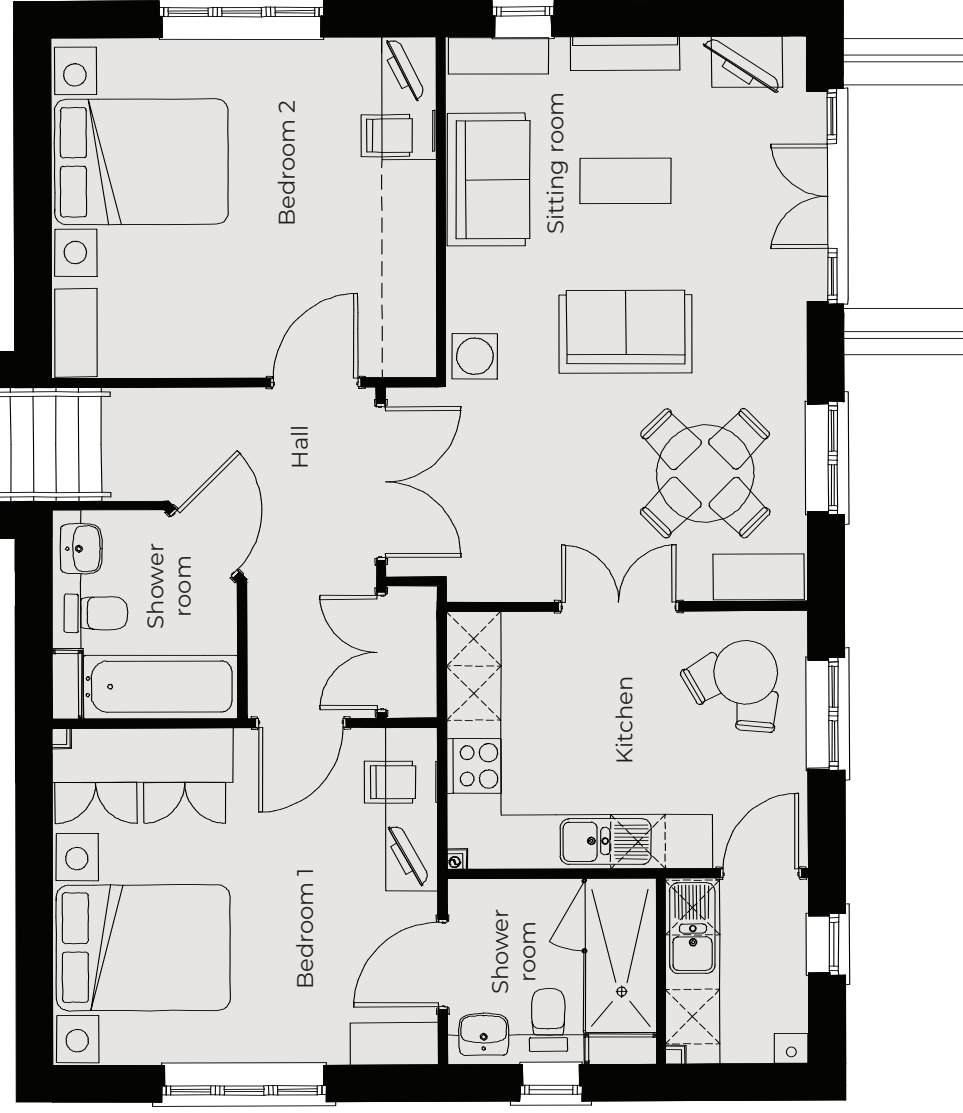
01332 899467

astonontrent@richmond-villages.com

Richmond Villages Aston-on-Trent,
Richmond Drive, Aston-on-Trent, Derbyshire, DE72 2EA

Apartment 27

First Floor



Kitchen	3976mm x 2839mm 13'11" x 9'4"
Living Room	3840mm x 4140mm 20'9" x 13'11"
Bedroom 1	4242mm x 3712mm 13'11" x 12'2"
Bedroom 2	4242mm x 3749mm 13'11" x 12'4"
En suite	2300mm x 2050mm 7'7" x 6'9"
Bathroom	2300mm x 2045mm 7'7" x 6'9"

These particulars are intended to give a fair and substantially correct overall description.

Measurements have been taken at 1500mm skimming height.

All dimensions are approximate. Bedroom measurements include the wardrobe if applicable. Room measurements include bay windows if applicable.

Furniture layout is to give an indicative impression. Although all efforts have been made to ensure its accuracy at time of print dimensions, fixtures, fittings, finishes and specifications are subject to change without notice.

The properties are sold unfurnished.

