

34 Village Centre – £192,500

(Other charges apply)

RICHMOND
VILLAGES

Part of Bupa

FF

1



1



EPC - C



1 bedroom assisted living apartment

Richmond Villages are pleased to offer for sale this delightful and newly refurbished, one bedroom, first floor suite with views of the lake and nature reserve. This suite is in a desirable location within the retirement village with easy access to the restaurant, bar, reception, art studio, library, wellness spa, outdoor seating areas, bowling green, café and shop.

Specification

- Double glazed west-facing window with views over the lake, remote controlled electric fire and Bath stone effect surround
- Modern fitted kitchenette with under cupboard lighting and built in fridge
- Master bedroom with double glazed window overlooking the lake
- En-suite shower room with walk-in shower, fitted sanitary ware and heated towel rail.
- Entrance hall with storage cupboard
- Central heating radiators in all rooms
- TV and satellite points*
- Laid lawns and well stocked flower borders maintained by the Village Gardeners
- Allocated parking space for one car

*Satellite subscription not included.

Important Notice: These particulars are intended to give a fair and substantially correct overall description. **Other fees and charges apply**, please contact the Village Advisers for further details. Properties are sold on a 125 year lease and this property has 114 years remaining.



01235 773970

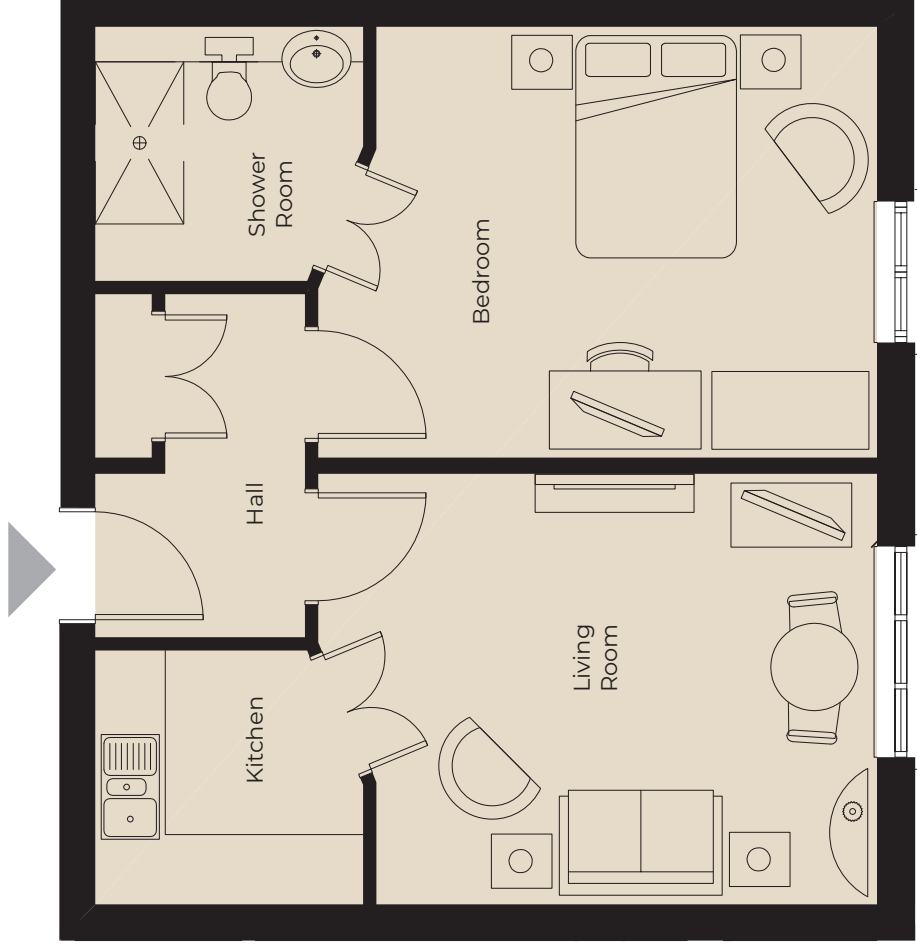
letcomberegis@richmond-villages.com

Richmond Villages Letcombe Regis,
South Street, Letcombe Regis, Oxfordshire OX12 9RG

34 Village Centre

First Floor | 545ft²

- Kitchen**
2300mm x 2180mm
7'7" x 7'2"
- Sitting Room**
4800mm x 3698mm
15'9" x 12'2"
- Bedroom**
4800mm x 3698mm
15'9" x 12'2"
- Shower Room**
2300mm x 2180mm
7'7" x 7'2"



These particulars are intended to give a fair and substantially correct overall description. Measurements have been taken at 1500mm skirting height. All dimensions are approximate. Bedroom measurements include the wardrobe if applicable. Room measurements include bay windows if applicable. Furniture layout is to give an indicative impression. Although all efforts have been made to ensure its accuracy at time of print dimensions, fixtures, fittings, finishes and specifications are subject to change without notice. The properties are sold unfurnished.

