

61 Village Centre – £190,000

(Other charges apply)

RICHMOND
VILLAGES

Part of Bupa

SF

1



1



EPC - B

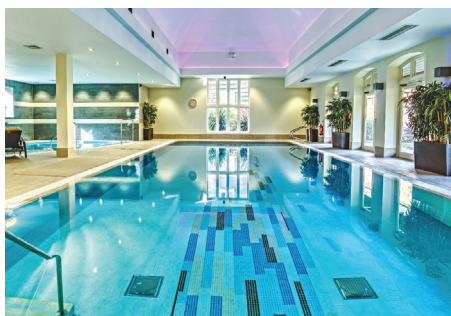


1 bedroom assisted living apartment

A bright and spacious one-bedroom apartment is located on the top floor of this luxurious living development. There is no need to use the stairs; we have elevators around the building. With views over the pond, this apartment offers peace, comfort, and tranquillity. If this is not what you are looking for, we offer the best of both worlds. Just a short elevator trip and you will find yourself in a vibrant retirement village, where you are free to explore the many facilities on offer.

Specification

- Spacious living room with remote controlled electric fire with Bath stone effect surround.
- Modern fitted kitchenette with under cupboard lighting and built-in fridge.
- Main bedroom with en-suite shower room.
- En-suite shower room with walk-in shower and fully fitted sanitary ware.
- Entrance hall with storage cupboard.
- Central heating radiators in all rooms.
- TV and satellite points*.
- Laid lawns and well stocked flower borders maintained by the Village Gardeners.
- Allocated parking space for one car.



*Satellite subscription not included.

Important Notice: These particulars are intended to give a fair and substantially correct overall description. Other fees and charges apply, please contact the Village Advisers for further details. Properties are sold on a 125 year lease and this property has 113 years remaining.

01235 773970

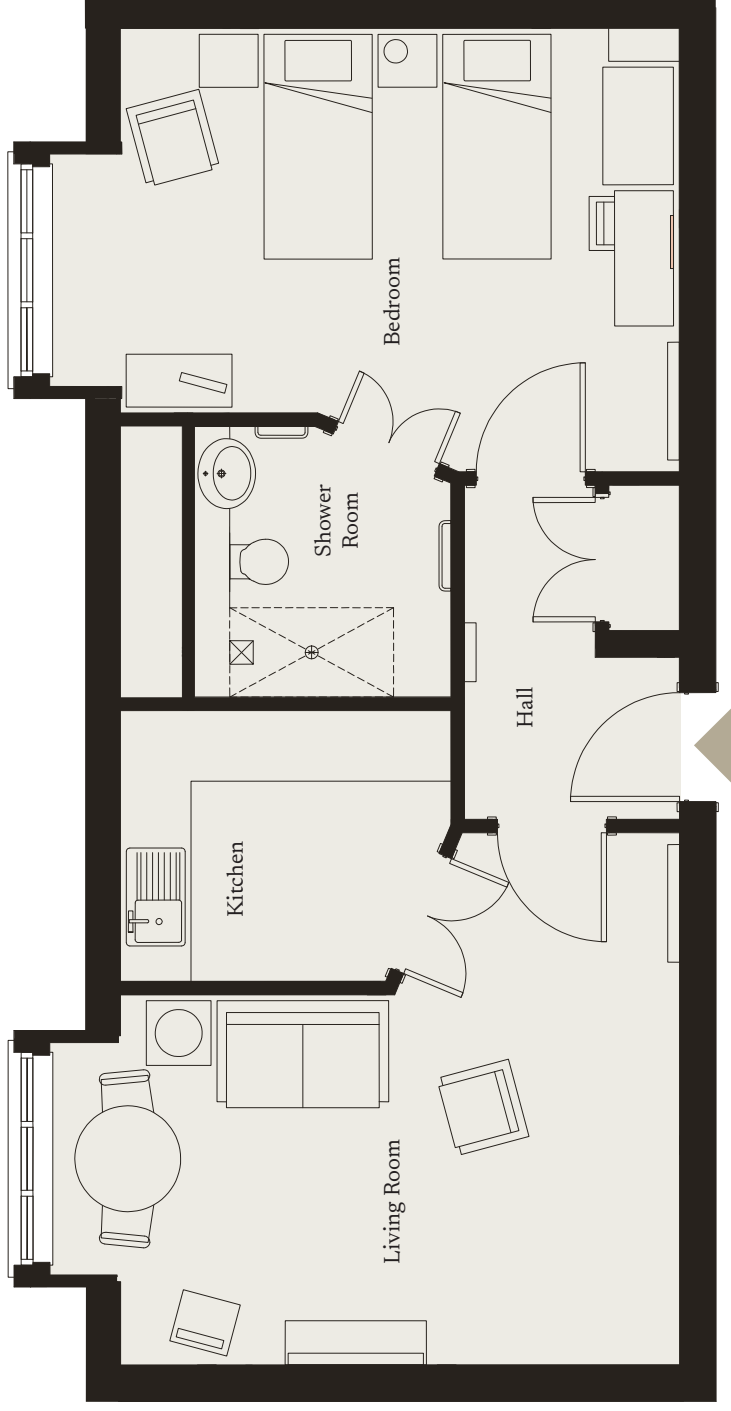
letcomberegis@richmond-villages.com

Richmond Villages Letcombe Regis,
South Street, Letcombe Regis, Oxfordshire OX12 9RG

61 Village Centre

Second Floor | 587ft²

- Kitchen**
2810mm x 2300mm
9'3" x 7'7"
- Living Room**
4750mm x 3145mm
15'7" x 10'3"
- Bedroom**
4750mm x 3270mm
15'7" x 10'9"
- Shower Room**
2300mm x 2180mm
7'7" x 7'2"



These particulars are intended to give a fair and substantially correct overall description. Measurements have been taken at 1500mm ceiling height.

All dimensions are approximate. Bedroom measurements include the wardrobe; if applicable. Room measurements include bay windows if applicable. Furniture layout is to give an indicative impression. Although all efforts have been made to ensure its accuracy at time of print dimensions, fixtures, fittings, finishes and specifications are subject to change without notice.

The properties are sold unfurnished.

