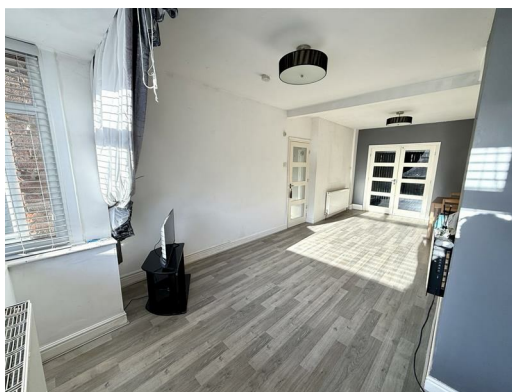




30 Moss Gate Road, Liverpool, Merseyside, L14 0JP

Offers around £189,950

Alpha-move are delighted to offer this extended three bedroom semi on Moss Gate Road, L14, close to schools, shops, local amenities and major road and rail transport links. The property briefly comprises of a porch, hallway with under stairs storage, through living room and L-shaped kitchen diner with integrated appliances. The first floor features two double bedrooms, family bathroom and a smaller bedroom. Externally there is driveway parking at the front and plenty of amenity space to the rear. This property is situated on a generous plot and has potential to be extended at the side and rear (planning consent approved) to become a large prestigious semi. This property would be ideal for first time buyers and both young and growing families and early viewing is recommended. Early viewing essential. Offered with no chain.



30 Mossgate Road, Liverpool, Merseyside, L14 0JP

Entrance Porch

6'8" x 4'3" (2.04 x 1.32)

Upvc door to front aspect.

Entrance Hall

14'2" x 5'6" (4.33 x 1.68)

Single radiator, upvc window to side aspect.

Reception Room

20'1" x 10'4" (6.13 x 3.15)

Electric fire, 2x double radiator, upvc window to front aspect.

Kitchen

13'5" x 6'0" (4.09 x 1.85)

Kitchen comprises of various wall and base units, oven, hob, extractor fan, fridge freezer, dishwasher, washer dryer, upvc window to rear aspect. 2x Double radiator.

Bedroom One

13'7" x 10'7" (4.15 x 3.25)

Double radiator, upvc window to front aspect.

Bedroom Two

11'4" x 10'10" (3.46 x 3.31)

Double radiator, upvc window to rear aspect.

Bedroom Three

7'0" x 6'5" (2.15 x 1.97)

Double radiator, upvc window to rear aspect.

Family Bathroom

8'4" x 5'4" (2.56 x 1.63)

Bath with shower over, low level wc, wash hand basin.

