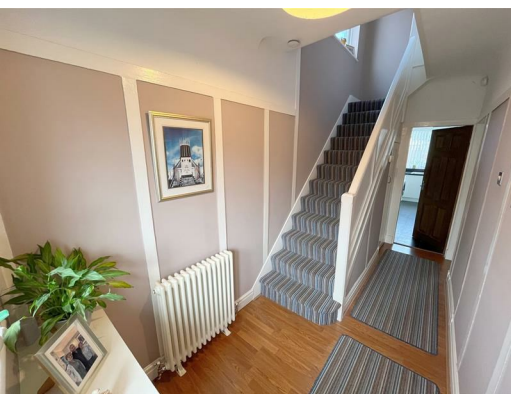




**5 Bedburn Drive, Liverpool, L36 4NL**

**£219,950**

Alpha-Move are delighted to offer this fantastic three bedroom extended semi detached in a sought after location on Bedburn Drive, L36, close to schools, local amenities and major transport links. The layout consists of an entrance hallway open plan lounge and dining room and kitchen on the ground floor with three bedrooms, and a large family bathroom on the upper floor. Externally, there is a driveway at the front, with a good sized garden at the rear also. Suitable for first time buyers and growing families alike. Early viewing essential.





## 5 Bedburn Drive, Liverpool, L36 4NL

### Entrance Hall

5'6" x 14'9" (1.68 x 4.50)

UPVC Door and window to front aspect. Radiator. Meter cupboard. Under stair storage cupboard.

### Reception Room One

10'8" x 10'11" (3.27 x 3.33)

UPVC Window to front aspect. Radiator. Gas fire. Open plan in to rear reception room.

### Reception Room Two

10'8" x 10'9" (3.27 x 3.29)

UPVC Window to rear aspect. Radiator.

### Kitchen

14'6" x 5'5" (4.44 x 1.67)

Range of wall and base units. Fridge freezer, oven, hob and extractor, washing machine. 2x UPVC Windows to rear and side aspect. UPVC door leading to rear garden. Radiator.

### Landing

6'0" x 7'10" (1.84 x 2.40)

UPVC Window to side aspect.

### Bedroom One

9'9" x 13'2" (2.98 x 4.02)

UPVC Window to front aspect. Radiator.

### Bedroom Two

10'5" x 10'9" (3.18 x 3.30)

UPVC Window to rear aspect. Radiator. Boiler in cupboard.

### Bedroom Three

7'9" x 6'7" (2.38 x 2.03)

UPVC Window to front aspect. Radiator.

### Bathroom

5'10" x 12'8" (1.79 x 3.88)

WC, vanity sink unit, bath and separate shower cubicle. Radiator towel rail. UPVC Window to side aspect. 2x Velux windows.

