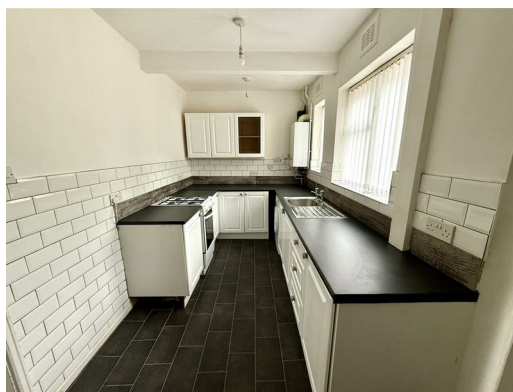




49 Adcote Road, Liverpool, L14 0LN

Offers around £132,950

Alpha-move are delighted to offer this super three bedroom extended townhouse on Adcote Road L14, close to schools, local amenities and major transport links. The layout briefly comprises of a hall, front living room, rear kitchen diner and family bathroom on the ground floor, with three double bedrooms on the upper floor. Externally, there is a gated driveway for parking at the front, with a small garden and patio to the rear also. This property is ready to occupy and is attractively priced making it an excellent choice for first time buyers, young families and investors. Early viewing is essential to avoid disappointment. Offered with no chain.



49 Adcote Road, Liverpool, L14 0LN

Entrance Hall

4'10" x 3'10" (1.49 x 1.19)

Radiator, upvc to front aspect.

Reception Room

15'11" x 13'4" (4.87 x 4.07)

Radiator, upvc window to front aspect.

Kitchen

16'5" x 6'11" (5.01 x 2.13)

Kitchen comprises of various wall and base units, stainless steel sink, cooker, washing machine, combi boiler, radiator, upvc window to rear aspect.

Rear Hall

4'1" x 3'6" (1.27 x 1.07)

Storage cupboard, upvc door to rear aspect.

Bathroom

6'11" x 6'0" (2.11 x 1.85)

Bath with shower over, wc, wash hand basin, radiator, upvc window to side aspect.

Bedroom One

16'7" x 11'8" (5.08 x 3.57)

Radiator, upvc bay window to front aspect.

Bedroom Two

11'11" x 9'4" (3.65 x 2.85)

Radiator, upvc window to rear aspect.

Bedroom Three

11'2" x 9'0" (3.42 x 2.76)

Radiator, upvc window to rear aspect.

