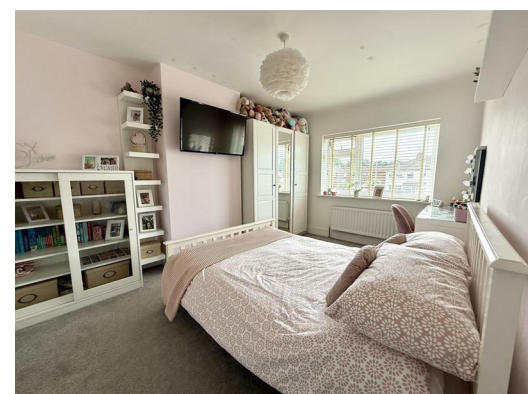




39 Willoughby Road, Broadgreen, Liverpool, L14 6XA

Offers around £289,000

Alpha-move are delighted to offer this fantastic four bedroom extended mid town house on Willoughby Rd L14, close to schools, major transport links and local amenities. The layout consists of a porch, spacious lounge, open plan kitchen, utility & wc and rear sitting room on the ground floor, with two double bedrooms, four piece family bathroom and smaller bedroom on the upper floor and a further double bedroom in the loft space of the second floor. Externally there is driveway parking for several cars at the front, with a large landscaped patio and garden to the rear also. This turn-key home has been modernised to an exceptional standard and would be perfect for first time buyers, young and growing families. Early viewing essential. (No building regs for loft).



39 Willoughby Road, Broadgreen, Liverpool, L14 6XA

Porch

5'4" x 5'1" (1.65 x 1.57)

Composite door. Radiator.

Front Reception Room

18'0" x 14'0" (5.49 x 4.27)

UPVC Window to front aspect. Radiator. Wood burner stove.

Kitchen

17'11" x 11'5" (5.47 x 3.49)

Range of wall and base units. Double oven, 5 burner hob, wine cooler and dishwasher. Radiator.

Utility WC

6'9" x 7'6" (2.06 x 2.30)

WC, stainless sink. Radiator.

Rear Reception Room

18'8" x 17'8" (5.69 x 5.41)

UPVC French doors and window to rear aspect. 2x Vertical radiators.

Bedroom One

13'8" x 10'7" (4.18 x 3.25)

UPVC Window to front aspect. Radiator.

Bedroom Two

12'0" x 11'3" (3.66 x 3.45)

UPVC Window to rear aspect. Fitted wardrobes. Radiator.

Bedroom Three

9'8" x 7'9" (2.96 x 2.38)

UPVC Window to front aspect, Radiator.

Bathroom

9'3" x 8'8" (2.82 x 2.65)

Bath, double shower, sink and WC. UPVC Window to rear aspect. Radiator.

Loft Room

15'1" x 12'0" (4.6 x 3.68)

2x Velux windows.

