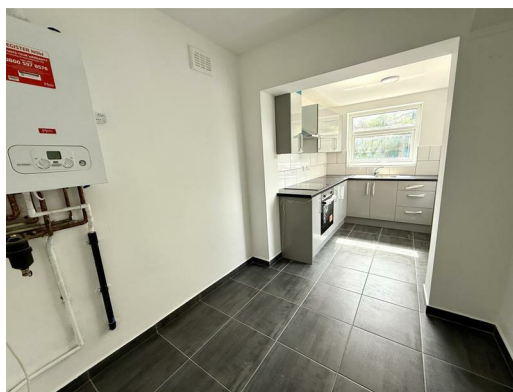




46 Denford Road, Liverpool, L14 2DW

Offers around £142,950

Alpha-move are delighted to offer this spacious three bedroom extended end town house on Denford Rd L14, close to schools, local amenities and major transport links. The layout consists of a hallway, front living room, larder storage, kitchen diner and wc/utility room on the ground floor, with two double bedrooms and family shower room on the first floor and master bedroom on the second floor. Externally, there is driveway parking at the front and a patio and garden to the rear and side. This property has been modernised throughout and is in turnkey condition, making it an ideal home for first time buyers, young families and investors. Offered with no chain. Early viewing essential.



46 Denford Road, Liverpool, L14 2DW

Entrance Hall

4'1" x 3'2" (1.25 x 0.99)

Radiator, composite door to front aspect.

Reception Room

13'0" x 15'7" (3.98 x 4.76)

Radiator, upvc bay window to front aspect.

Pantry

6'9" x 2'11" (2.08 x 0.89)

Meter cupboards, upvc window to side aspect.

Kitchen / Diner

16'4" x 7'5" (4.98 x 2.27)

Kitchen comprises of various wall and base units, combi boiler, upvc window and door to rear and side aspect.

WC & Utility

6'0" x 5'1" (1.85 x 1.57)

Wc, wash hand basin, radiator, upvc window to rear aspect.

Bedroom One

10'9" x 9'0" (3.28 x 2.75)

Radiator, upvc window to front aspect.

Bedroom Two

12'0" x 9'9" (3.66 x 2.98)

Radiator, upvc window to rear aspect.

Bedroom Three

15'3" x 13'8" (4.66 x 4.17)

Radiator, upvc window to front aspect.

Bathroom

7'0" x 6'11" (2.15 x 2.12)

Double shower, vanity sink, wc, chrome towel rail, upvc window to rear aspect.

